

washroom review



CALDER | JOINERY

plumbware.co.uk





A word from the editor

The last 3 months have been very busy, since the last issue of “Washroom Review”.

The main manufacturing production of school toilet cubicles is always very busy in the summer months alongside other washroom projects.



In the last few months we have been updating the products and services, which you can read in the news section of the website.

We launched the product range of pre hung fire doors from Calder Joinery which have been a great success which you can read more about in this edition of “Washroom Review”.



Increased height configurations are now available on the “Create Specification” tool for Cairngorm, Grampain, Cambrian and Malvern Plus.

With the end of year approaching, we hope you all have a wonderful Christmas and a Happy New Year.



Contents

- 5 Minutes With
- Putting Safety First
- Did You Know?
- Our Christmas Charity

cubiclecentre



**20 Years
Experience**

**Increased
Height
Configurations**



- Made to measure
- Wide choice of colours and laminates
- UK nationwide delivery
- A cubicle range to suit any environment or budget
- We only use responsibly sourced wood-wased materials

Cubicle Centre
Caldervale Business Park
Ravensthorpe
West Yorkshire WF13 3JL
Tel: 01924 457600

5 minutes with



Andrew Pedley
Logistics Manager
Cubicle Centre



Tell me about your role at Cubicle Centre?

My role at Cubicle is quite complex, but one of my primary roles is to ensure that our transport operations adhere to all the undertakings of our operator's licence and all current laws. I am also tasked with the selection and maintenance of our fleet. I plan and book our training needs and download tachographs and cards. I help with the pre-production by carrying out site visits and also when there are issues, I go out to resolve these. I am a qualified electrician and look after our machinery and site. I am an experienced C+E (class 1) driver and am called on to drive our flagship vehicle to complete deliveries when needed.

What was the first truck you drove?

I have driven many trucks in my career but the first truck I drove was when I worked on a farm it was a Dodge 6-wheel bulk blower that we used to blow food from into silos around the farm. The first truck I drove on the road though was a Bedford TK I took my test in a Ford D series

How miles per year do think you do?

The number of miles I drive in a year would depend on the business, but I would say not as many as I used to.

What was the most difficult delivery you've made?

The most difficult delivery I have made for the Cubicle Centre was when we supplied a new build in the centre of London. It was a large order and was to be craned off the vehicle, so the pallets could not be stacked. It was a full deck on a 45ft trailer not the best vehicle to take to London never mind having to turn into small side roads and reverse into tight bays.

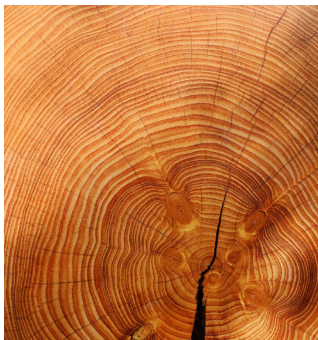
Do you think driverless trucks will eventually do your deliveries of cubicles?

I personally don't think that automated vehicles will completely replace the driver they may be used to move bulk deliveries from A to B but navigating inner city roads wouldn't work.



QUALITY COMMERCIAL JOINERY PRODUCTS BY

CALDER | JOINERY



Our Services

- CNC Machining
- Design Services
- Laminating
- Post Forming
- Fire Doors
- Panel Cutting
- Spraying
- Edge Banding

Contact Us

Calder Joinery
Caldervale Business Park
Ravensthorpe
West Yorkshire WF13 3JL
Tel: 01924 457600

www.calderjoinery.co.uk
e-mail: sales@calderjoinery.co.uk



Feature article

Putting safety first

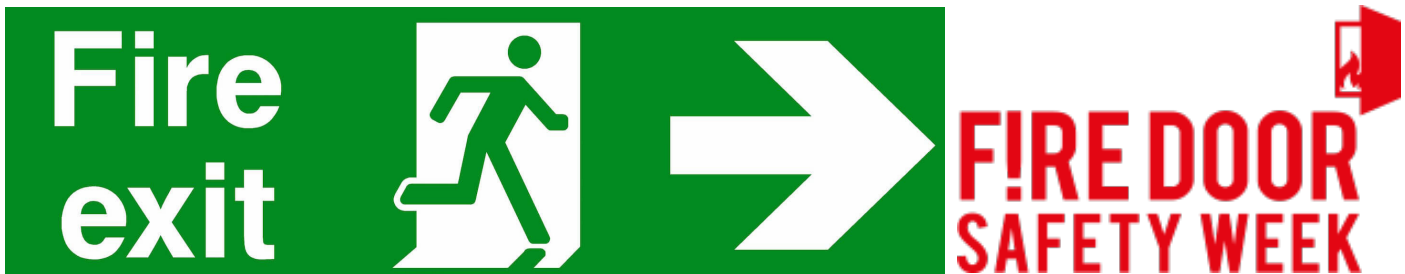
CALDER | JOINERY

Earlier this year Fire door safety week, rolled out its campaign to highlight the risks of not installing and using fire doors correctly. Fire doors are an engineered safety device and is not just a door. These doors are the first line of defence in a fire, that's why it's important to make sure your door is the right specification, and continued maintenance and management can result in a life or death situation.

At Calder Joinery we have invested in specialist machinery and training. The company has received the BM Trada Q-Mark certification, so you know that your safety has been out first. We are able to provide FD30 and FD60 rated fire doors, in any finish.

Also, if you require glazing options, with additional seals for superior acoustic performance, speak with our team to find out the options available. Our fire doors and doorsets have been 3rd party tested in accordance with BS476 part 22 assuring product quality, traceability and performance.

If you require any further information on our products or fire doors at Calder Joinery, then why not visit our website: www.calderjoinery.co.uk or call 01924 457600



Are you Fire doors up to code?

Here is a simple five check step you can do from the fire door safety week website:

•Check for certification is there a label or plug on top (or occasionally on the side) of the door to show it is a certificated fire door?

You can use the selfie function on your camera phone or a mirror to check. If there is, that's good news, otherwise report it to whoever is in charge of your building.

•Check the gaps check the gaps around the top and sides of the door are consistently less than 4mm when closed.

You can use a £1 coin to give a feel for scale, this is about 3mm thick. The gap under the door can be slightly larger (up to 8mm is not uncommon), but it does depend on the door - as a rule of thumb, if you can see light under the door, the gap is likely to be too big.

It's good news if the door fits the frame and it's not damaged. If not, report it. If the gaps are too big smoke and fire could travel through the cracks.

•Check the seals are there any intumescent seals around the door or frame, and are they intact with no sign of damage?

These seals are usually vital to the fire door's performance, expanding if in contact with heat to ensure fire (and in some cases smoke) can't move through the cracks. If not, report it - the door may not be properly maintained and in the intensity of a fire may not protect you long enough.

•Check the hinges are the hinges firmly fixed (three or more of them), with no missing or broken screws?

If you see problems, report it - the door is obviously not properly maintained and in the intensity of a fire may not perform and hold back the fire for long enough.

•Check the door closes properly open the door about halfway, let go and allow it to close by itself.

Does it close firmly onto the latch without sticking on the floor or the frame?

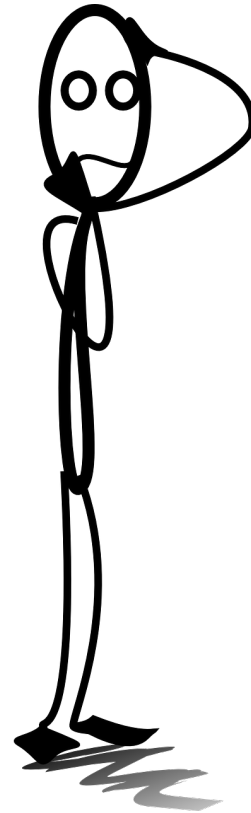
If not, report it. A fire door only works when it's closed.

A fire door is completely useless if it's wedged open or can't close fully.



Did you know?

“Arthur Gibling is believed to have invented the first flushable toilet.”



Our christmas charity 2018



Well 12 months have flown by. Every year we choose a charity to highlight on our christmas cards.

At Cubicle Centre we love our four legged freinds, so this year we are donating to “Many Tears” which are an amazing animal rescue organisation.

The chairty rescues boths cats and dogs and are based in Wales.

To learn more about “Many Tears” visit their website:

www.manytearsrescue.org

plumbware.co.uk

Save 10% off Pendle
Toilet Packs

*whilst stocks last



Fast Delivery Toilet Cubicles

A box packed toilet cubicle system suited for all dry areas.

Why choose Pendle?

- Dispatched within 48 hours
- Box packed for ease of transport and handling
- Fully adjustable on-site
- Durable panels with tough PVC edging
- Come in a choice of different laminates

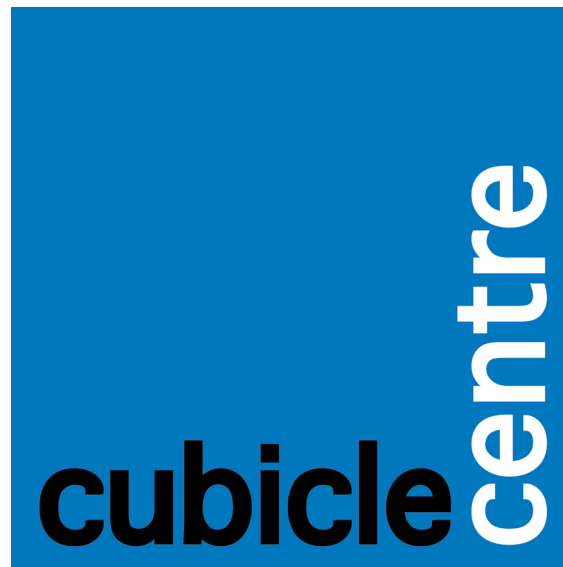
Prices start from **£125**

T: 01924 457600

E: sales@plumbware.co.uk

W: www.plumbware.co.uk

sage pay
safe & secure



© Cubicle Centre 2018