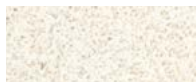


Malvern Plus® Cubicle System

Uniclass 1.4 L2226 NBS Create 25-05-60/160
Uniclass 2015 Ss_25_12_60_60 Keynote K32/120



+44 (0)1924 457600
design@washroomcubicles.co.uk
www.washroomcubicles.co.uk



Luna Beige
L016



Davos Oak
H3133

[VIEW ALL COLOURS](#)



The mark of responsible forestry

Certain Melamine Faced Chipboard (MFC) colours can be supplied as FSC® certified on request

Manufacturer

Cubicle Centre
+44 (0)1924 457600
design@washroomcubicles.co.uk

CAD BLOCK
.dwg format

BIM OBJECT
.rfa format

NBS PLUS
Create Specification

Product reference Malvern Plus Cubicle System

Material Melamine Faced Chipboard

Overall cubicle height

1955mm including a 155mm floor clearance (standard)

2100mm including a 100mm floor clearance (option)

Partitions

Partition depth 1500mm (standard)
Up to 1800mm

Partition height 1800mm (standard)
2000mm (option)

Colour See below

Doors

Colour See below

Fittings

SAA: head-rail, brackets, adjustable cubicle legs, heavy-duty hinges and cubicle latches

Wall Panel System

Height Not required, Full-height, Half-height

Material Melamine Faced Chipboard

Panel colour See below

Flash colour See below

Colour

Full colour range www.washroomcubicles.co.uk/malvern-plus-colours/

For guidance on standard toilet cubicle sizes referencing Building Regulations Part M and the Equality Act 2010 visit - www.washroomcubicles.co.uk/toilet-cubicle-sizes/

