



# Drain<sup>®</sup>

## Drainage Systems for Elevated Roadways





## **dani alu** **ideas + aluminium = dani alu**

### **dani alu: comprehensive Know-how in the fields of flat roof and facades**

For more than 35 years, dani alu has become a European leader in flat roof and facade systems. Dani alu is a leader in the development, production and supply of aluminium building components. The company focuses on 4 areas of specialization: Flat Roof, Security, Facades and Facades & Structures. In particular the company is well known for the quality of its roof and balcony covers and protection, as well as edge protection systems and window cills to name a few of the product ranges.

### **dani alu: customer focused and innovative research and development**

Innovation is at the heart of the dani alu philosophy and the whole team is orientated towards customer expectations and to anticipate the future requirements.

The development of new ideas is carried out in co-operation with experts from the industry. Our engineers develop technical innovations based around need assessments. The original designs by dani alu are protected by patents. With Iteal, dani alu offers a series of innovations in terms of the energy-efficiency of the buildings external envelope.

### **dani alu: specialist engineering services for your project.**

dani alu will accompany you and your project from concept to construction

### **dani alu: an integrated manufacturer**

With production always carried out in its own facilities, dani alu can always guarantee the highest quality and on schedule delivery.

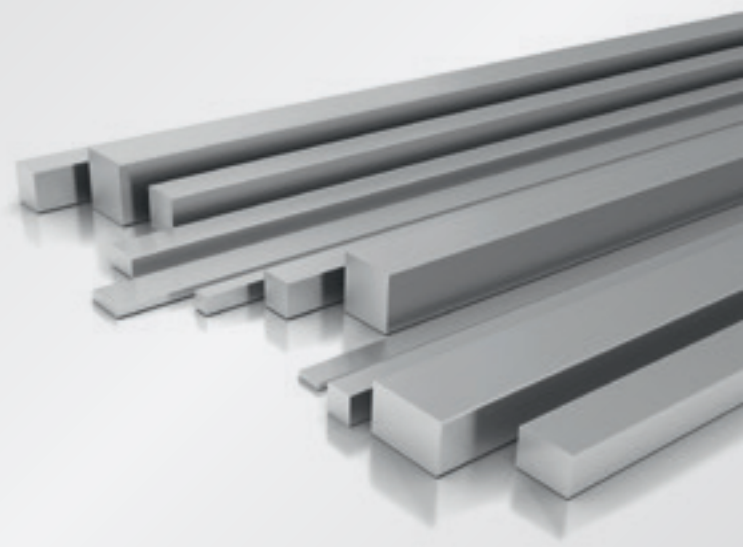
## **dani alu** **The complete service for your project.**

In addition to the planning and production of aluminium systems dani alu can also take care of any projects depending on your individual needs.

Take advantage of our full consultation and design service!

### **Why aluminum?**

Aluminium is an essential construction material due to its mechanical properties. It is three times lighter than steel; very easy to process; is stainless and is 100% recyclable.



*Patented system.  
Brand and models are registered designs.  
Examples are given as a guidance.*



Summary	page
System Overview	3
Drain Alu	4 – 5
Drain Stainless Spiral	6
Specification text	7
Order / Quotation	8

# Drain®

## System Overview

### Function

Why a drain direction of flow?

To ensure the safety of users and improve the sustainability of the structures, the rain water and run-off must be evacuated rapidly and effectively from the top of the bulkhead of a bridge. The direction of flow is an important element in the evacuation of the water and to minimise surface water on the surface.

### Technical Specification

What type of drain to use?

There are two types of drains commonly used:

- Drain alu
- Drain Stainless Spiral

### Prescription

Hydrocarbon coatings commonly used on concrete bridges cement are permeable, also the water has a tendency to accumulate and to flow to the seal/bearing layer interface because it is blocked by the presence of the screed. The presence of water is detrimental to the road surface and on the other hand, there is the risk of water reaching the structure following a local defect in the water tightness. It is therefore desirable to

evacuate as soon as possible including by putting in place a drainage system in the road surface. These may include:

- transverse drains perpendicular to traffic flow
- longitudinal drains

Two drains side by side will double the flow capacity available.

Where to go to obtain the technical guide necessary for the implementation of the drains?

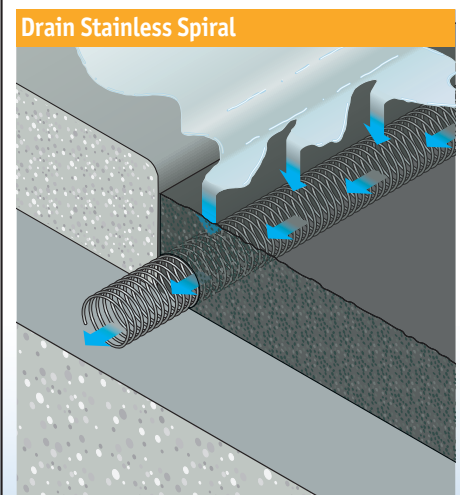
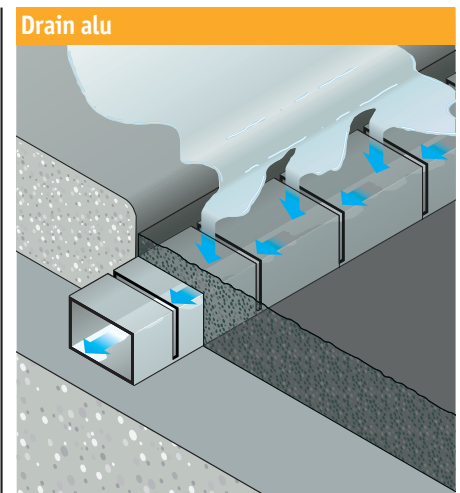
These drain systems were first used in France and have been used extensively on bridges throughout the country and including in Alpine locations.

The terms of use of these drains are covered in the technical guide SETRA «remediation of road bridges. Remove Wastewater, armouring.

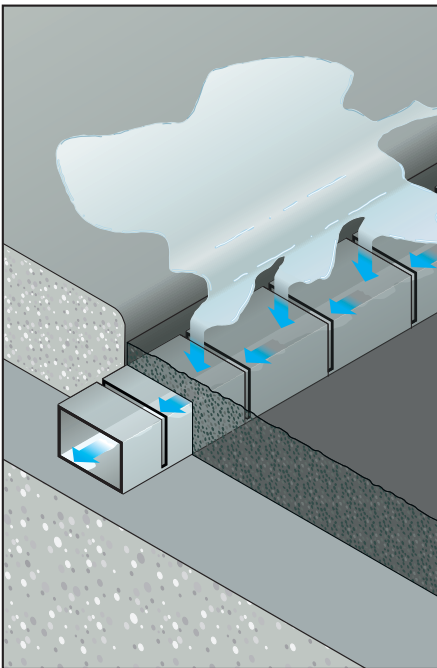


**SERVICE FOR TECHNICAL STUDIES ON ROADS AND MOTORWAYS**

Contact dani alu UK Ltd for all initial technical guidance.



# Drain<sup>®</sup> alu

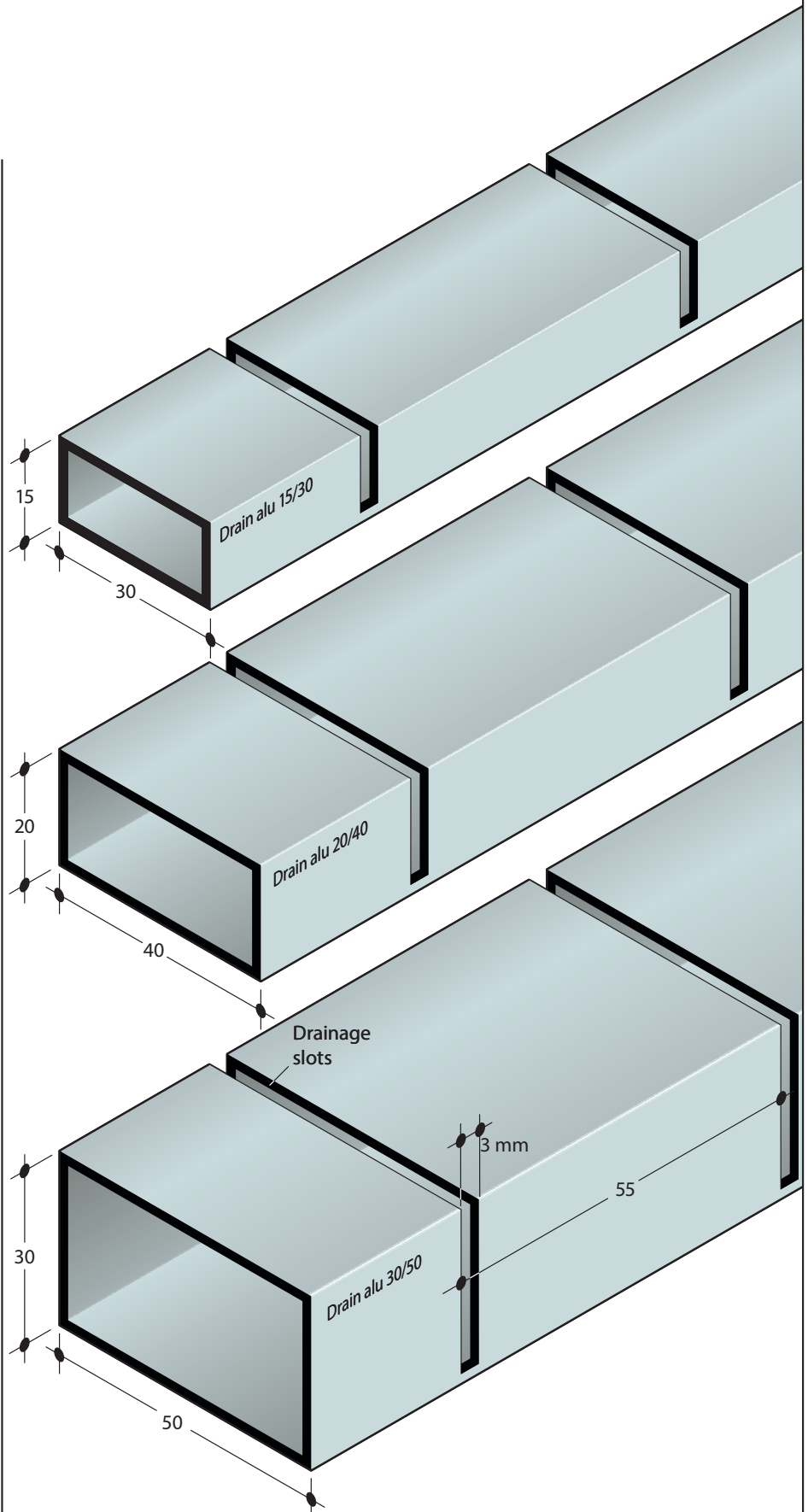


The Aluminium Drain is available in 3 standard sizes

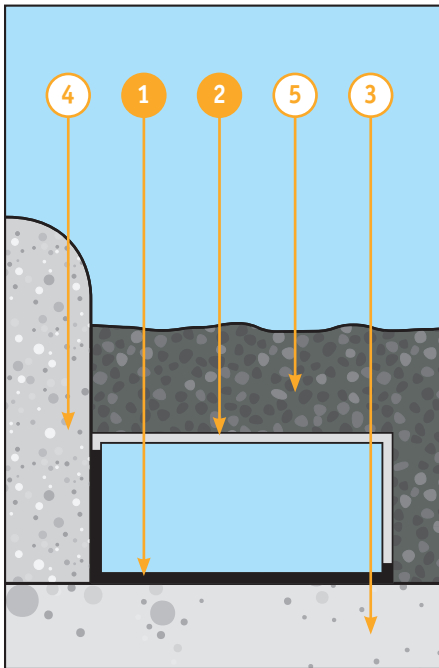
- 15 x 30 mm
- 20 x 40 mm
- 30 x 50 mm

The system can be installed flat or its side (see following examples)

The elements are supplied in standard lengths of 3000 mm and can be jointed with specific joining sections and cut to size.



# Drain<sup>®</sup> alu

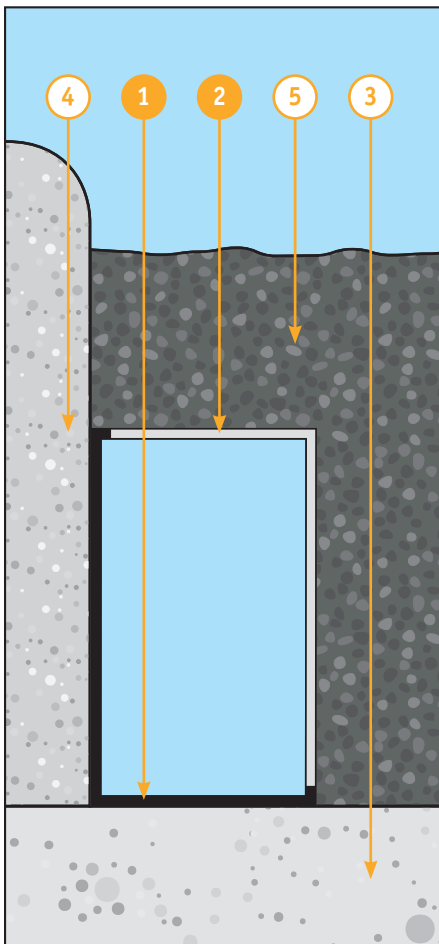


## Example of installation

### Drain alu 20/40 flat

Scale 1/1

- 1 Drain alu 20/40
- 2 Drainage slots
- 3 Support
- 4 Border
- 5 Surface



## Example of installation

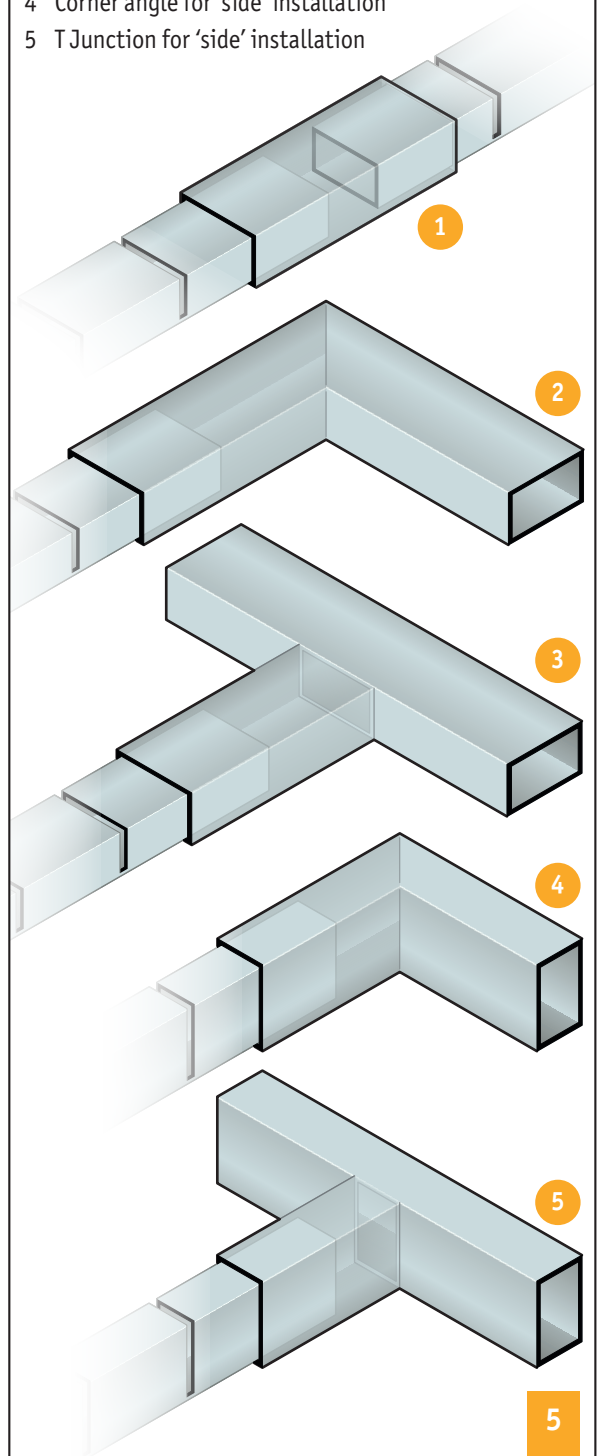
### Drain alu 30/50 side

Scale 1/1

- 1 Drain alu 30/50
- 2 Drainage slots
- 3 Support
- 4 Border
- 5 Surface

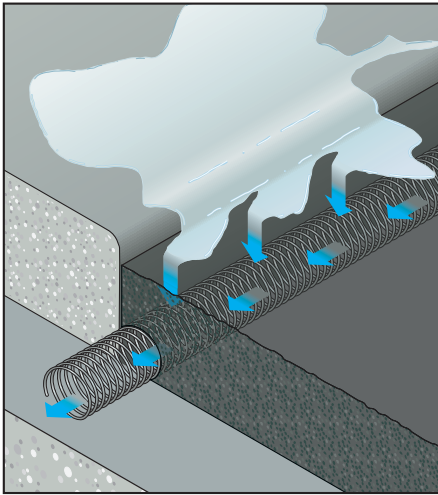
## Accessories for Drain Alu

- 1 Junction Sleeve
- 2 Corner angle for 'flat' installation
- 3 T Junction for 'flat' installation
- 4 Corner angle for 'side' installation
- 5 T Junction for 'side' installation



# Drain<sup>®</sup>

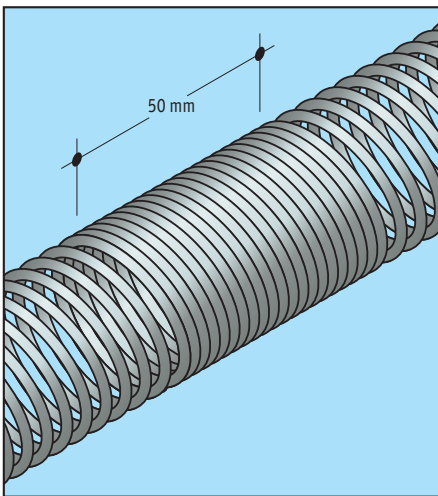
## Stainless Spiral



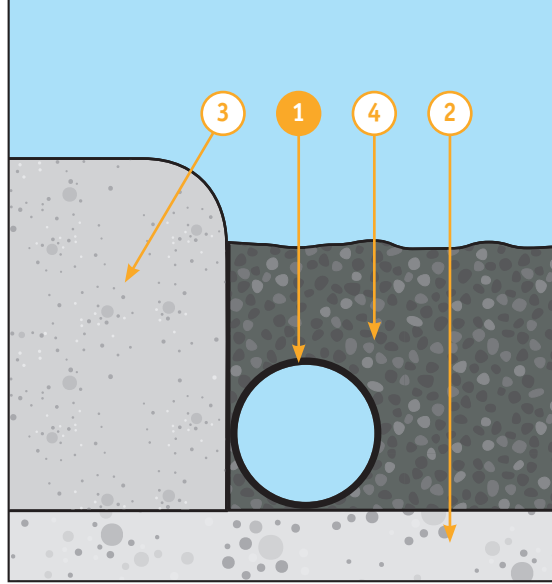
The Stainless Spiral drain is available in 3 standard sizes:

- Ø 20 mm
- Ø 25 mm
- Ø 32 mm

Other dimensions are possible upon demand.  
Standard lengths are 5000 mm.



The connection between two sections of Spiral drain is done by entwining together for a 50mm section.

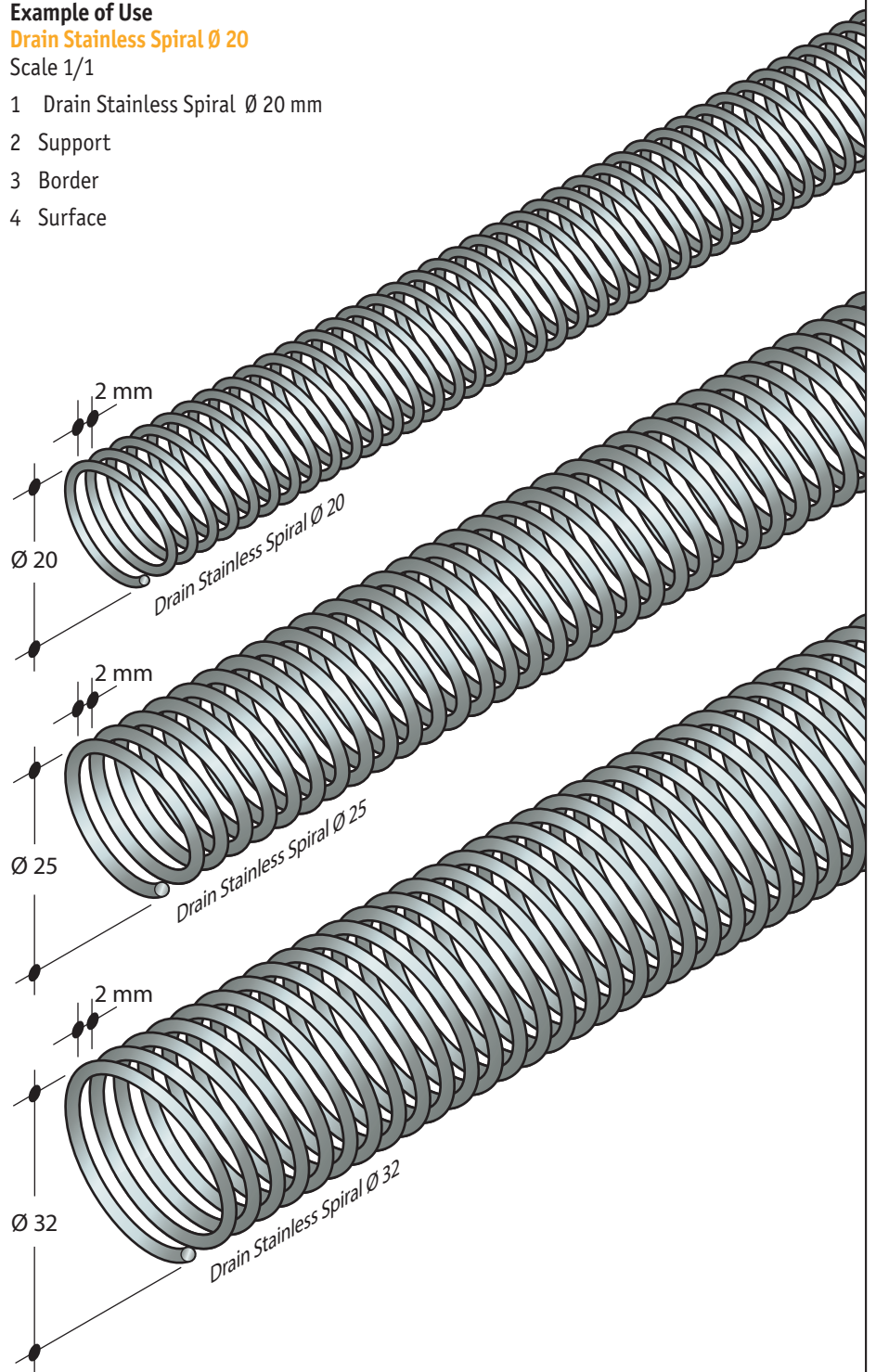


### Example of Use

#### Drain Stainless Spiral Ø 20

Scale 1/1

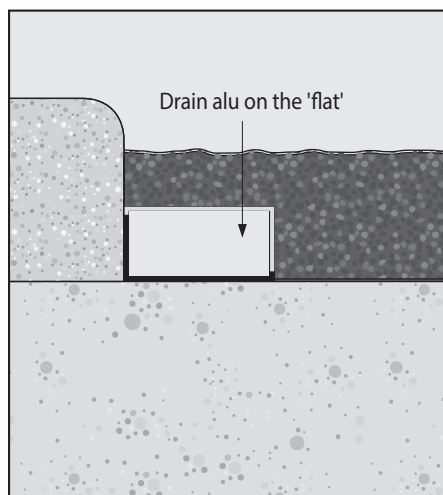
- 1 Drain Stainless Spiral Ø 20 mm
- 2 Support
- 3 Border
- 4 Surface





# Drain<sup>®</sup>

## Specification Text

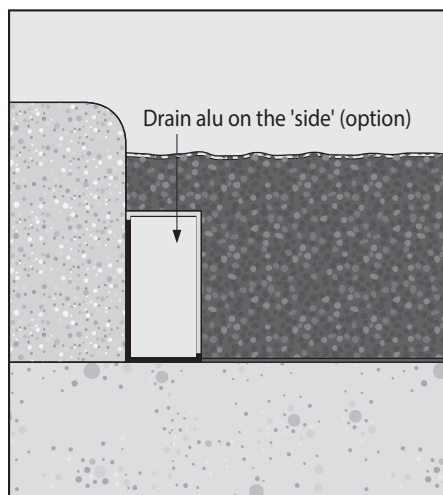


### Drainage Systems for Elevated Roadways type Drain<sup>®</sup> alu

Drainage system for elevated roadways in aluminium extrusion type Drain alu\* \_\_\_\_\_ from dani alu Ltd, tel +44 1865 595160, or equal or approved. System comprises of profiles in standard lengths of 3000 mm, and all necessary system accessories (junction sleeve, corner angle; T Junction to suit 'flat' or 'side' installations).

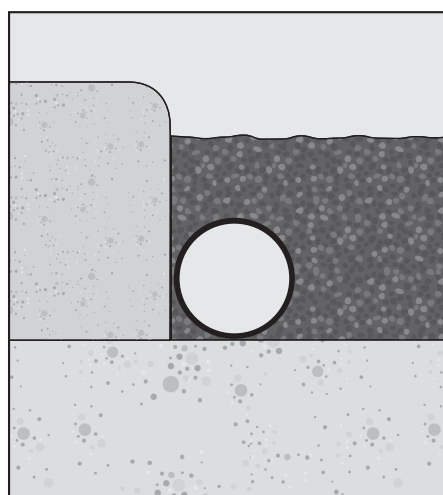
\*Specify your choice of 'flat' system:

15 x 30 mm flat      20 x 40 mm flat      30 x 50 mm flat



\*Specify your choice of 'side' system:

15 x 30 mm side      20 x 40 mm side      30 x 50 mm side



### Drainage Systems for Elevated Roadways type Drain<sup>®</sup> Stainless Spiral

Drainage system for elevated roadways in aluminium extrusion type Drain Stainless Spiral \* \_\_\_\_\_ from dani alu Ltd, tel +44 1865 595160, or equal or approved (technical file available upon request). System comprises of profiles in standard lengths of 5000 mm, and interconnected in a 50 mm section 'entwining' two profiles.

\*Specify your choice of system:

Ø 20 mm      Ø 25 mm      Ø 32 mm



**dani alu UK Limited**  
 Hexagon House  
 Avenue Four  
 Witney  
 Oxfordshire  
 OX28 4BN  
 Telephone: +44 1865 595160  
 Fax: +44 1865 595161  
 Email: [contact@danialu.co.uk](mailto:contact@danialu.co.uk)  
[www.danialu.com](http://www.danialu.com)

## Drain®

Date: \_\_\_\_\_ Page: \_\_\_\_\_ of \_\_\_\_\_

Company address/company stamp:

\_\_\_\_\_  
 \_\_\_\_\_  
 \_\_\_\_\_  
 \_\_\_\_\_

(Tick the relevant boxes)

**Order**

Drain is available from stock, at home or on your sites.

**Request a quote**

a study       a live project

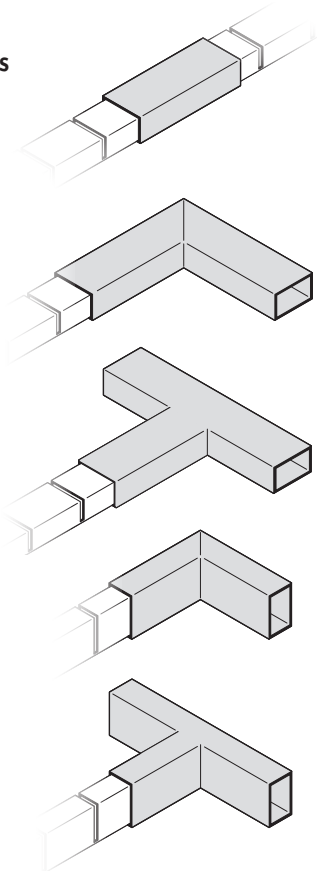
Telephone: \_\_\_\_\_ Contact: \_\_\_\_\_

Fax: \_\_\_\_\_ Mobile: \_\_\_\_\_

The target date of construction: \_\_\_\_\_ Project reference: \_\_\_\_\_ Email: \_\_\_\_\_

### Drain alu

#### Accessories



	Quantity	Unit Price	Total Amount
<input type="checkbox"/> <b>Model 15 x 30</b>	_____ ml	_____	_____
<input type="checkbox"/> <b>Model 20 x 40</b>	_____ ml	_____	_____
<input type="checkbox"/> <b>Model 30 x 50</b>	_____ ml	_____	_____
<input type="checkbox"/> <b>Junction sleeve</b>	_____ units	_____	_____
<input type="checkbox"/> <b>Corner Angle 'flat'</b>	_____ units	_____	_____
<input type="checkbox"/> <b>Tjunction 'flat'</b>	_____ units	_____	_____
<input type="checkbox"/> <b>Corner angle 'side'</b>	_____ units	_____	_____
<input type="checkbox"/> <b>Tjunction 'side'</b>	_____ units	_____	_____

### Drain Stainless Spiral

	Quantity	Unit Price	Total Amount
<input type="checkbox"/> <b>Model Ø 20</b>	_____ ml	_____	_____
<input type="checkbox"/> <b>Model Ø 25</b>	_____ ml	_____	_____
<input type="checkbox"/> <b>Model Ø 32</b>	_____ ml	_____	_____