



Jaymart

Textra Product Information

Designed for internal/ external sheltered areas. UV & rot resistant DDA/ wheelchair compliant. Mini studded design multi-directional entrance matting/ foyer carpeting.

Description / Colours Available

Textra is a super heavy duty 100% polypropylene needle felt, mini-diamond, waffle backed entrance matting/foyer carpeting.

It's attractive multi-directional ribbing traps dirt, dust and moisture, whatever the direction of traffic.

Textra offers a similar high specification to our Polyrib and Zigazaga, easily cut to size without fraying. As with Zigazaga, in addition to its traditional use as an attractive entrance/ foyer matting, Textra is also popular for use as carpeting for offices, public houses, leisure centres, corridors, etc. Also suitable for use in sheltered outdoor areas.

Please also see Textra featured in our Alligator and Grime ranges of prestigious aluminium matting systems in our separate catalogue..

Roll sizes 25m approx. x 2m wide

Cut lengths available



Night Shadow



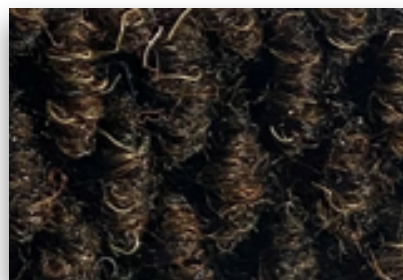
Goblin Grey



Raw Jeans



Raw Umber



Mahogany Brown



Ancient Red

Textra Complies with BS 8300 - 2:2018 for an inclusive and accessible environment

Wheel Chair Friendly



10mm
Gauge

Textra Specification

Use Recommendations

Entrance matting for Shops, Offices, Public Buildings, Hotels, Public Houses, Schools, Leisure Centres, Libraries, Poast Offices, Universities, Theatres etc.

Manufacturing Process

Needlefelt ISO 2424

Surface Aspect

Diamond Studded

Pile Yarn Composition

100% Polypropylene

Backing

Waffleback ISO 2424

Pile Weight

1150g/m² +/- 7.5%

Total Weight

2110g/m² +/- 7.5% ISO 8543

Pile height

4.2mm =/- 0.5mm ISO 1766

Total Height

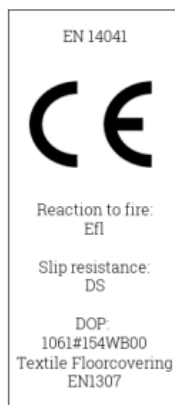
9.8mmm =/- 7.5% ISO 1765

Flammability

Efl EN 13501 -1

E4 Reg, Number

E4118R11-020273



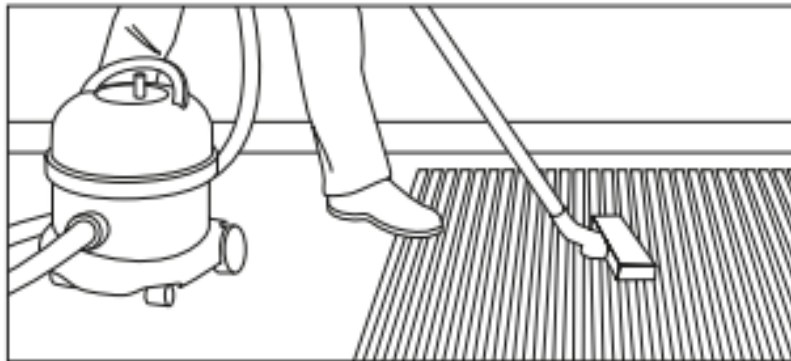
Textra Installation, Cleaning & Maintenance

Installation

Ideally fully adhered to dry, smooth sub-floors with approved adhesive but can be loose laid if necessary in matwells or as protective runners. Easily cut to size without fraying.

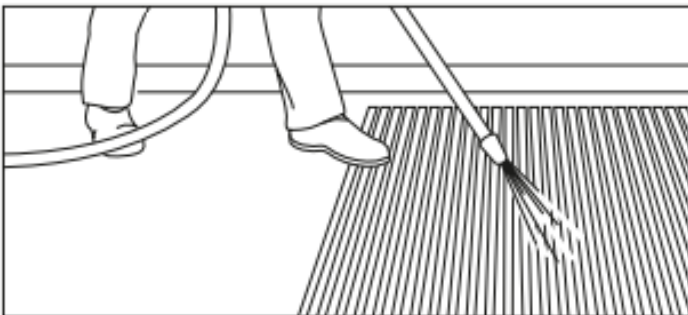
Maintenance

We recommend daily vacuuming with suction attachment for best appearance retention and longer working life.



For periodic maintenance the best results can be achieved by the periodic use of a spray or dry extraction carpet cleaning machine, or where possible by the removal of the matting for pressure washing or steam cleaning.

The use of a mild detergent (neutral pH) cleaning solution in the carpet cleaning machine should loosen ingrained soiling and aid the removal of oils and grease.



More stubborn stains should be treated with a solvent based spot remover prior to re-cleaning with the detergent solution.

Chewing gum can be removed by freeze spraying or with a proprietary chewing gum remover and then scraped or combed out of the matting carpet pile. This should be done before the full cleaning process is started.



Our 4 step process to a cleaner environment

Step 1

The best way to keep your premises clean is to stop dirt from even getting through the front door. Effective exterior matting scrapes clean and wipes dry, leaving the worst dirt and grit outside, and allowing subsequent interior matting to clean even better.

Step 2

Working in a similar way to exterior matting, this is similarly tough and durable matting that carries on the work to remove the last of the most damaging soil and grit, and continue the drying process.

Step 3

With the worst of the damp and debris now dealt with, secondary internal matting is a high-specification, high-performance product that finishes the dusting and drying.

Step 4

The foyer is one of the highest traffic areas in your building so, however effective your entrance matting, easy to clean, highly durable and attractive carpet that always looks its best will help you make a great first impression – every time.

Environmental Impact/ Responsibility

Our Products Use 100% recycled Aluminium and can be recycled after use making our aluminium mat products very environmentally friendly. This combined with the ability to replace the insert material rather than replacing the whole mat, means that although not directly eligible for BREEAM Credits selecting Jaymart will help in supporting your BREEAM certification.

We Manufacture in the United Kingdom to precise specifications/ measurements. This means Jaymart can reduce waste and transport.

Our products are extremely Hardwearing and will reduce the need for frequent replacement to support BREEAM MAT 05 criteria and also minimise the use of harmful cleaning chemicals and cleaning/ maintenance costs for the end user.

BREEAM MAT 01 addresses the environmental impact through the lifecycle of the product. The Jaymart aluminium entrance matting system have the ability to refurbish rather than replace means that our products can further support your aims. It will also help with meeting BREEAM MAT 06 requirements. We can also offer products made from natural inserts from sustainable sources to further meet environmental aims. The expected useful lifespan when refurbished is 30 years approximately dependent on wear and correct maintenance being carried out.



Proudly Manufactured in The UK



100% Recycled Aluminium





Jaymart

**Jaymart Rubber & Plastics
Limited**

**Roman Way, Crusader
Park,**

Warminster

BA12 8SP

Tel 01985 218994

Email: sales@jaymart.co.uk

www.jaymart.co.uk