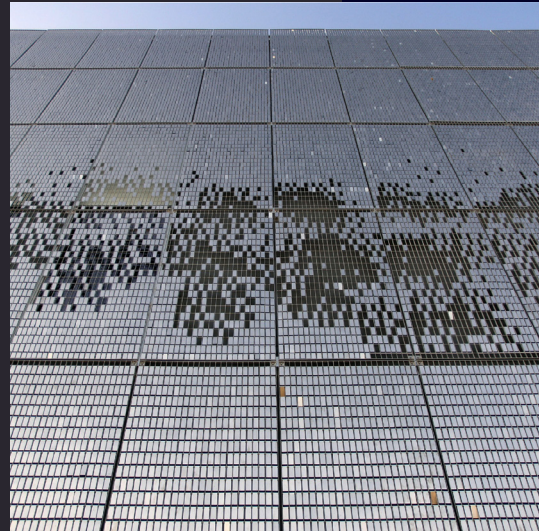
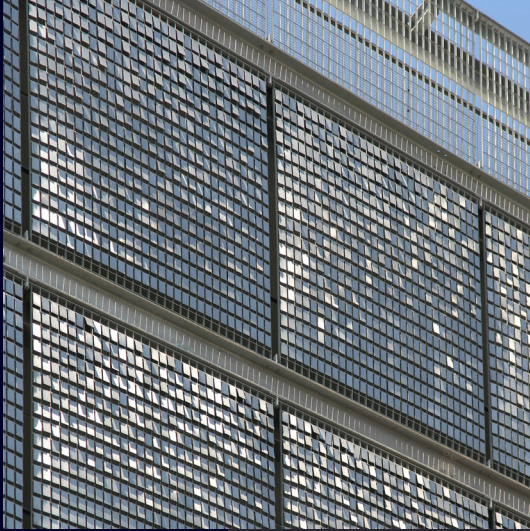


— LANGFULTON —



**STEREO-KINETIC® Wall  
Cladding System**

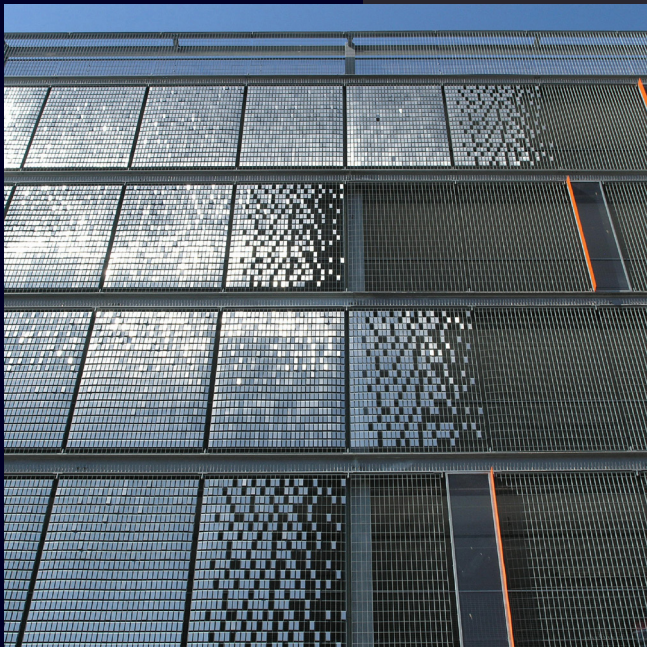
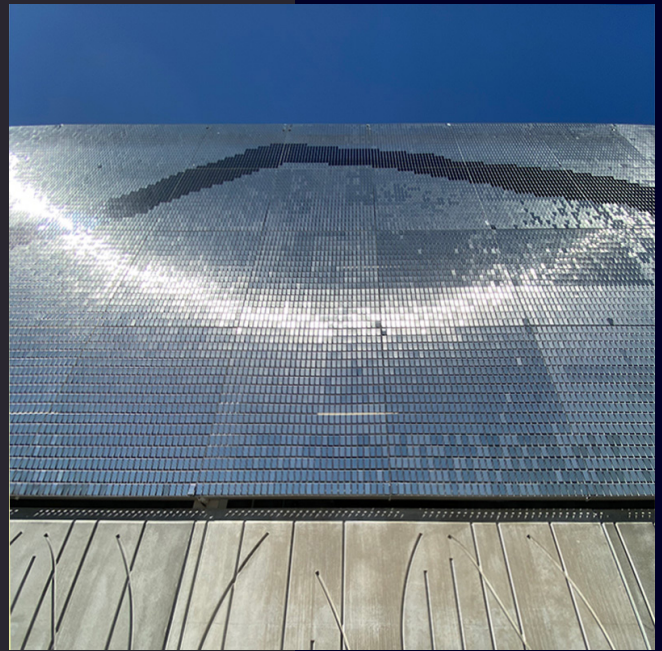


..... “A massive, continuously moving, public artwork creating the impression of waves blowing over a metallic field of grass.”

## Creativity & Inspiration

Kinetic architecture adds a new dimension to the built environment; no longer do buildings have to be rigid and static.

STEREO-KINETIC® Wall has a wow factor and a versatility which allows for the architect to design each project as a creative artwork. Its effect can be transformational, enhancing the city with a unique and dramatic installation of public art.



The STEREO-KINETIC® Wall cladding system can be designed as:

- a continuous facade
- a featured area
- a pattern
- an arrangement to allow the passage of natural daylight
- a canvas for projected light shows

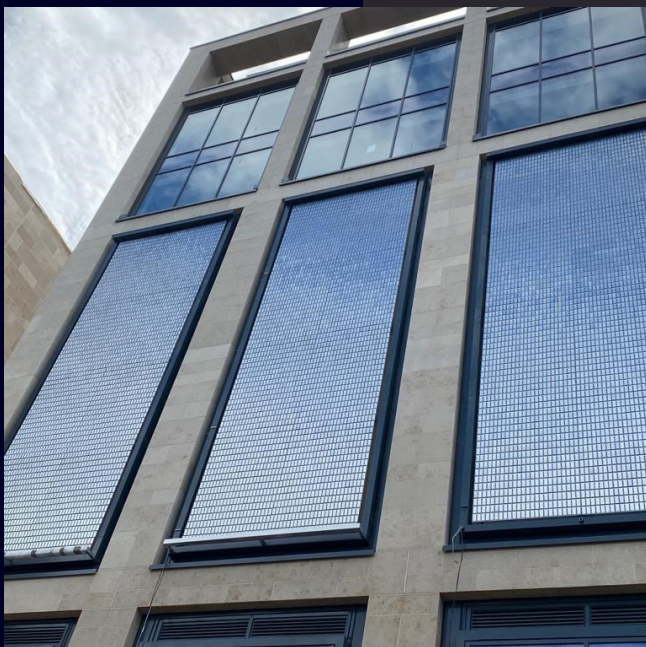
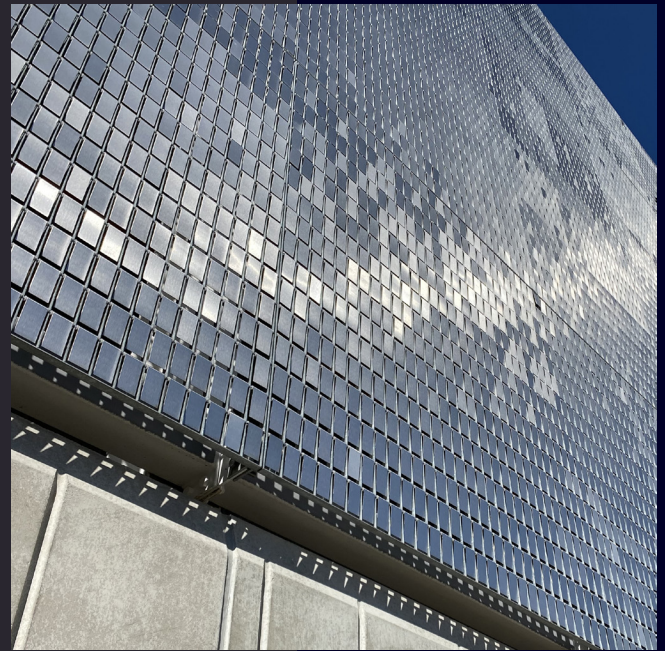


Steel grating is a low cost material for wall cladding with many practical attributes:

- ventilation
- protective barrier\*
- security
- bird screen
- natural daylight

\*Panels can be made to accept the horizontal loadings for pedestrian barriers up to a 3m span (BS EN 1991-1-1).

A STEREO-KINETIC® Wall facade is made using hundreds of stainless steel tiles which are suspended from grating panels. Gusts of wind or the movement of traffic cause the metal rectangles to ripple in an ever-changing display.



Lang+Fulton work closely with the architect from concept to final design, preparing CAD drawings and advising on support steelwork, alternative fixing methods and loading specifications to current British Standards.

Fully finished panels are supplied to custom sizes together with all components, providing a complete package.

Panel Dimensions:

max recommended size 3000x1874mm.

Finishing

Marine Grade Stainless steel:  
brushed (alternative grit range).

Mild Steel Gratings:

hot-dip galvanized to BS EN ISO 1461.

UK Trade Mark Registration No. 3460654

Patent Application No. 2104672.7



## CASE STUDY

Riverside Retail & Leisure, Rochdale

- Multi-storey Car Park
- Redevelopment

## Rochdale Riverside

By incorporating a contemporary architectural form and material palette, the vision for the major redevelopment of Rochdale was to revitalise the town centre by providing a destination experience for retail and leisure.



The impact of STEREO-KINETIC® Wall was fundamental to the project. Described by architects, TP Bennet, “... as a dramatic kinetic wall featuring a relief depicting the River Roch, which runs in a culvert underneath the centre”.

And reported by Rochdale Online, “To bring visual interest and activity a unique moving tile wall will move with the wind to create rippling effects. It will create a truly distinctive piece of public art and feature at a key entrance point to the town for tram and bus passengers”.

The panels were designed to provide a seamless facade. Lang+Fulton fitted the 77,500 self-coloured and blue stainless steel tiles off-site using a template corresponding to the architect's design.



## CASE STUDY

Olympia Leisure & Culture Centre, Dundee

- Multi-storey Car Park
- New Development

## Olympia Culture & Leisure Centre, Dundee

The centre forms part of the ambitious £1 billion redevelopment at Dundee's waterfront, which includes the new V&A Museum.

The design of the new car park was a collaboration between Lang+Fulton and Dundee City Council.



The STEREO-KINETIC® Wall cladding system was applied to the eastern facade of the car park. Viewed from the outside the entire wall appears to move while reflecting the sunlight and the River Tay.

On the inside, intricate patterns of light and shadow, similar to the way light filters through trees, are projected onto the walls and floor.

Three different types of panel were used, with a smaller aperture grating for the infill at ground level to provide enhanced security. Stereo grating panels were supplied for the other elevations, radiused at the corners of the building and spaced at intervals to include glass inserts. Each panel was fixed by bolting to the structural steel framework.





CASE STUDY

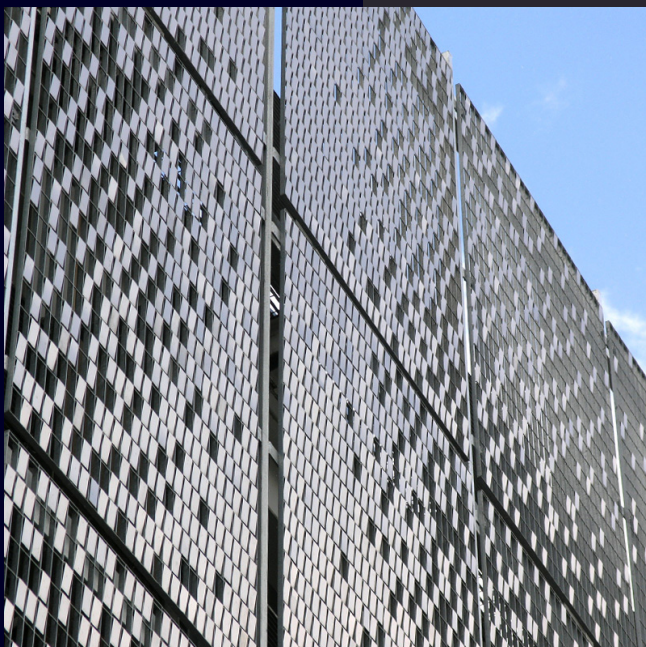
Festival Place, Basingstoke

- Multi-storey Car Park
- Refurbishment

## Festival Place, Basingstoke

Lang+Fulton worked with Bell Associates on the refurbishment of the 3,000 space car park, which had been built in 2002.

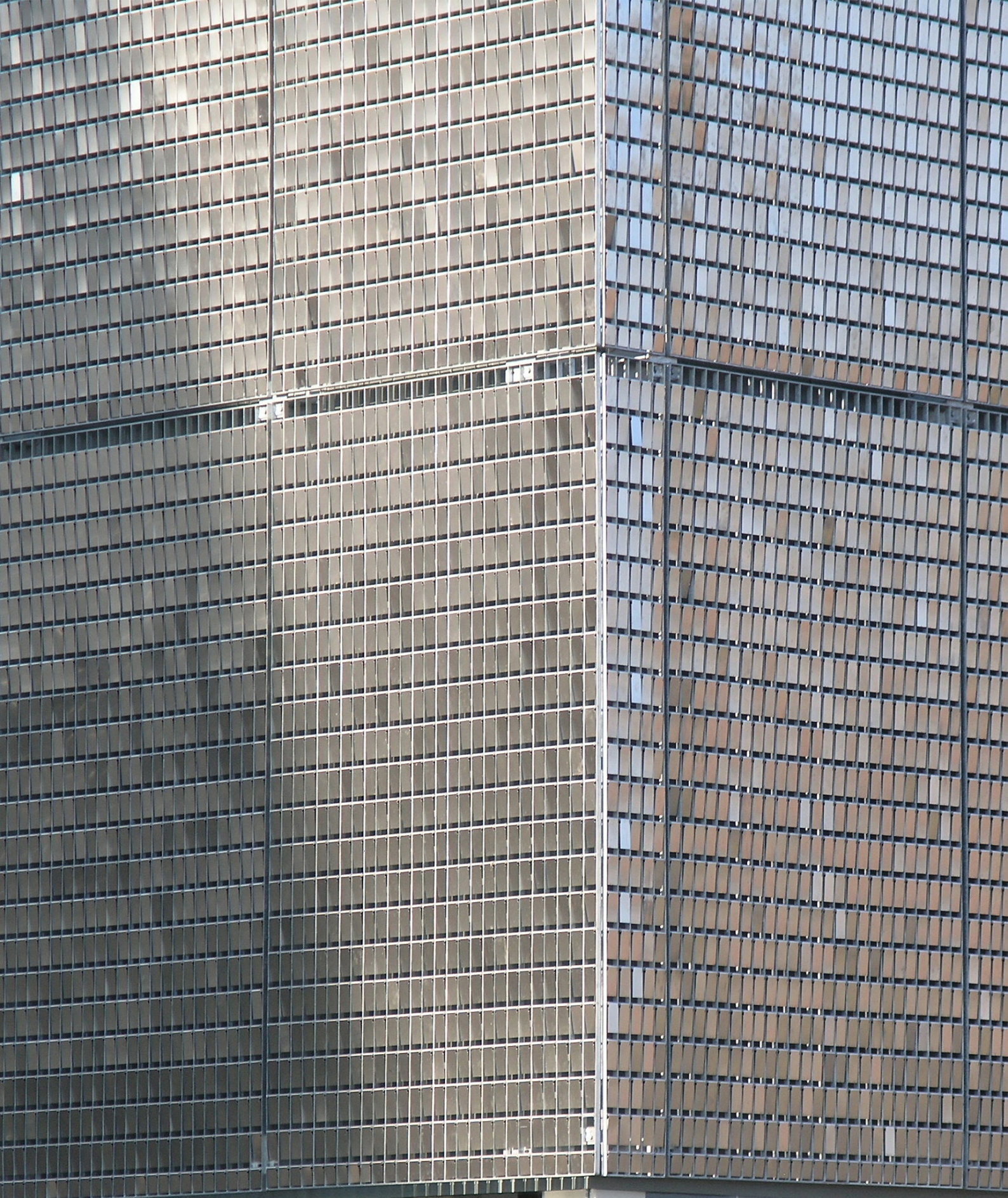
The new façade has transformed the dated appearance of the original car park and links it to a new extension with one continuous style of frontage.



The STEREO-KINETIC® Wall façade was mounted on an independent steel frame which was bolted back to the existing structural steelwork.

Detailed ventilation and glare studies were conducted to ensure that the project fully complied with regulations and site specific conditions.

The gradation of the stainless steel tiles was calculated to allow for the required level of ventilation, with large areas of open grating to allow for the very poor air flow through the building. Where the panels were mounted on the overpass, which crosses the A3010, no tiles were fixed to the bottom row of grating and the level of polishing to the tiles was reduced to minimise glare.



## CASE STUDY

H&M, Ocean Terminal, Edinburgh

- Retail Store
- Extension

## Ocean Terminal, Edinburgh

The frontage of H&M received a radical makeover as part of a major investment to increase footfall by enhancing the visitor experience. In addition to 70 shops, cinema, spa, gym, cafés and restaurants Ocean Terminal is home to the Royal Yacht Britannia.



The stainless steel tiles of the STEREO-KINETIC® Wall panels were applied in a speckled pattern at second floor level to allow the passage of natural daylight through the underlying window openings.

Architects Keppie, say that the new extension, “develops a more affirmative relationship with the street, coming out from the shadows of the overhang, providing a new entrance and visual connectivity with the interior.”

The new extension has also created a high-profile enhancement to the retail space of H&M.





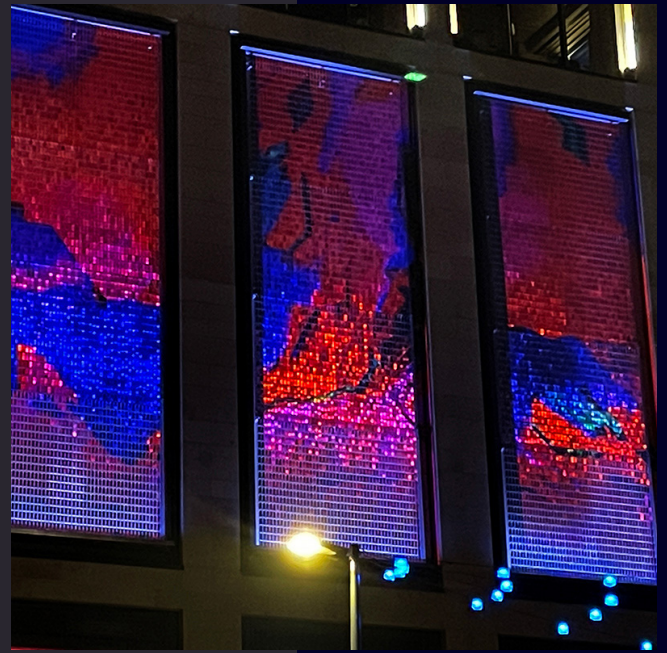
## CASE STUDY

St James Quarter, Edinburgh

- Prestige Mixed Development
- Art Installation

## St James Quarter, Edinburgh

St James Quarter is one of the UK's most significant regeneration projects creating a retail-led, lifestyle district. Edinburgh city centre is a World Heritage site and the north-east elevation of the development commands an open outlook and key site line.



It was considered important that an art installation should form part of the facade, set within three recessed bays which had been constructed for this purpose.

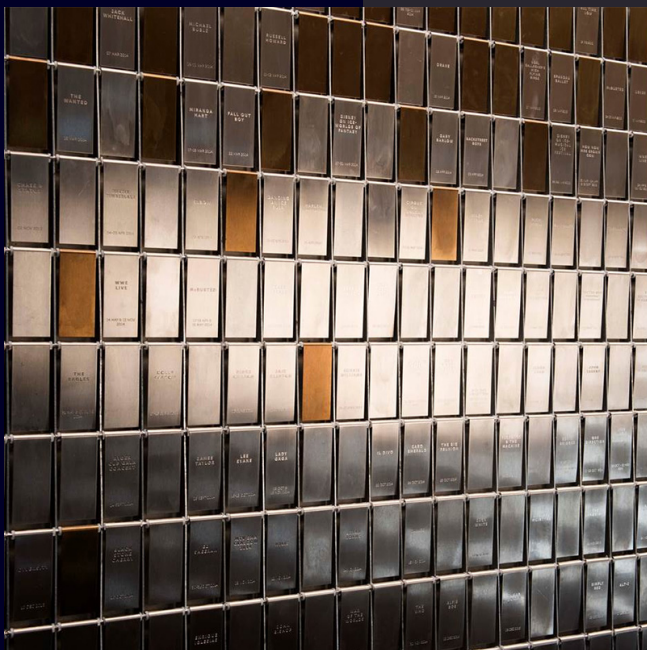
Lang+Fulton worked closely with BDP to develop the project using their STEREO-KINETIC® Wall product, introducing an eye-catching and reflective element with the dynamic quality created by the mobile stainless-steel tiles.



Lighting tests were conducted on prototype panels and a full lighting report was submitted proposing back-lighting and up-lighting in addition to the facility for projections from the adjacent building. A special fixing method was also utilised to ensure that each set of 8 panels formed a frame-less and seamless surface.

STEREO-KINETIC® Wall can be used as a decorative installation, both internally and externally.

Small quantities of tiles can be heat treated to create different shades of bronze.



The SSE Hydro in Glasgow, designed by Foster + Partners, is the biggest performance arena in the UK. The dramatic structure takes the form of a skewed dome, with external walls clad in translucent air-filled ETFE cushions that can create a dazzling illuminated facade.

The project at the SSE Hydro was the first occasion when STEREO-KINETIC® Wall was used for internal decoration. Each stainless steel tile is engraved with the name of an artist, commemorating their performance.

The result was a stunning and imaginative method of covering the drab concrete wall which greets the high-profile performers who appear at the arena.



# LANG+FULTON

Lang & Fulton Ltd, Newbridge Industrial Estate, Newbridge, Edinburgh EH28 8PJ  
t: 0131 441 1255    sales@langandfulton.co.uk    www.langandfulton.co.uk

Stockholding Depot: Cygnus Point, Black Country New Road, West Bromwich B70 0BD