

EDUCATION GUIDE



THE BEST WINDOWS ARE MADE FROM

PROFILE22[®]

Windows, doors and curtain walling

Profile 22 is the most widely specified window, door and curtain walling system for educational buildings. From tiny acorns grow mighty oaks; whatever your project requirements from small extensions through to extensive refurbishment we have the solution.

The benefits new windows can bring to schools, academies, colleges and universities are remarkable. Whilst instantly transforming a tired-looking building into a secure learning environment, PVC-U windows also vastly improve the thermal performance of the building and lower heating bills. The Building Research Establishment (BRE) rates PVC-U windows A+ for commercial buildings making it the most sustainable choice for specifiers.

About Profile 22

Profile 22's windows and doors are the perfect solution for educational buildings to improve energy-efficiency, security, lower heating bills and transform a tired looking building. An investment in PVC-U windows and doors could be just what your building needs, and with our range of different foiled colour options, you can even match your school's colours.

Profile 22 is the UK's leading PVC-U window and door systems company boasting more than 40 years' experience. We are proud to say we possess the UK's most widely specified PVC-U window and door system. All of our products are backed-up by unrivalled technical support, knowledge of contracts, government initiatives and industry expertise.



The Most Sustainable

THE BEST WINDOWS ARE MADE FROM







Picking the right contractor has never been easier

Whatever the specification, budget, project size and demands of your project, we understand that picking the right contractor is never easy. Closing your building for refurbishment is not always an option. You need a contractor who can work around your busy timetable whilst ensuring minimum disruption.

Most schools replace their windows and doors as part of a phased completion process. Our contractors can create a works schedule, often spanning several years, which suits your school's financial requirements and plans. Profile 22 can also advise on the likely energy and maintenance savings that your school can expect when fitting new windows and doors.

Profile 22 takes the pressure off you with its network of Approved Window Contractors who operate nationally and regionally who have experience in education projects, meaning they can hit the ground running. Our network members hold the minimum standards such as constructionline/EXOR and quality accreditations you would expect such as Secured by Design and hold a valid certificate as proof of their 'Approved' status.

THE BEST WINDOWS ARE MADE FROM





Profile 22 products

PVC-U windows and doors

The highly specified fully accredited Profile 22 system includes an extensive selection of PVC-U windows, doors, curtain walling, SAFEWARE hardware and complementary accessories in a variety of styles and finishes to suit any building.

The system features a high performance centre seal system for enhanced insulation and weather protection - optional third seal. This greatly improves weathering performance and security, while the low line appearance maximises visual glass area and minimises the seal sightline for a more aesthetic look.

Windows

We can design windows to suit your requirements. Our range includes:

- Styles: Choice of six basic designs with infinite variations
- Security: High security hinges and locking systems
- PVC-U Frames: Choice of 70mm Optima Chamfered or Sculptured, Flush Casement, Flush Tilt-Turn, Fully Reversible and Vertical Sliding
- Glazing: Choice of 24mm, 28mm, 36mm, 40mm and 44mm glazing and a large range of finishes for improved energy efficiency and incorporating safety features
- Low maintenance: Wipe clean surfaces and intermittent component lubrication
- Aesthetics: Slim sightlines, choice of handles and selection of frame finishes.

Curtain wall

The high performance purpose designed curtain walling system from Profile 22, offers a best value solution which combines quality, sustainability, aesthetics, price and performance making it the perfect choice when creating large areas of fenestration for refurbishment or new build schools projects.

- Superb strength and high performance
- Polyamide thermal break with 0.168W/m²K conductivity
- Fully compatible with 70mm windows and doors
- Improved building aesthetics
- Fully accredited and BSI tested
- Glazing options
- Tried and tested solution
- Diverse range of colours
- Uniformity of product texture.

Doors

You can choose the door product that suits your school.

Your choices include:

- **Safety:** Choice of safety glass, high security locks and push-bar panic devices
- **PVC-U:** High impact, energy efficient frames
- **Security:** Range of multi-point locking systems
- **Glazing:** 24mm, 28mm, 36mm, 40mm and 44mm safety glazing and a choice of panels and glazing types.

Colours to match

Profile 22 offer a comprehensive range of internal, external and base colour options to provide the best aesthetic window and door solutions for its commercial clients. With 30 colour options to choose from, and a complementary base colour enhancing the appearance of products coloured on both sides, it's one of the many reasons why Profile 22 is one of the most specified PVC-U systems for all commercial projects, from social housing to student accommodation, and new build to education and healthcare projects.



THE BEST WINDOWS ARE MADE FROM



Why choose Profile 22?

Profile 22 is the UK's leading window and door systems supplier. Part of the Epwin Group, the business has more than 40 years of proven expertise and is committed to excellence and high ethical and environmental standards.

A continuing programme of investment in facilities, manufacturing technologies and its people has produced an outstanding range of high-performing products to suit the needs of every sector. Profile 22's systems are the mostly wisely specified, trusted by architects, specifiers and construction professionals alike.

Profile 22 is an ISO 9001 registered business which works to OHSAS 18001 and the ISO 14001 environmental management standard. A member of the VinylPlus initiative, it is committed to sustainable practices.

Fully supported

We can offer all the support you need. From initial consultations, with no obligation, right through to full specification help, advice and project planning from start to finish.

We have a highly experienced field and office based technical support team and a network of Profile 22 **Approved Commercial Manufacturers**, whose training, skill and dedication will contribute to the success of your project.

Fully accredited systems

The Flush Casement system is Secured by Design accredited, giving peace of mind to the end-user. Windows have been tested and approved to PAS24 (enhanced security performance requirements for doorsets and windows in the UK).

The system is manufactured to BES6001, ensuring that its constituent materials have been responsibly sourced, and allowing additional points under BREEAM.





Achieves
0.8 U-value



THE BEST WINDOWS ARE MADE FROM



Case studies

Rivington and Blackrod School, Bolton

Background:

This 19th Century building required the refurbishment of 160 windows, including the replacement of arched windows and the preservation of original glazed lights which featured a design of the school's crest.

Benefits:

- Project completed in term time with minimum disruption to 1,650 pupils and with strict health and safety procedures
- Fully integrated Profile 22 70mm window system
- Excellent thermal performance
- Advanced glazing and high performance products for heat retention during the winter and heat reflection during the summer
- Retained character and complemented the building style
- Low maintenance
- High security.



St. Pius RC Primary, Dundee

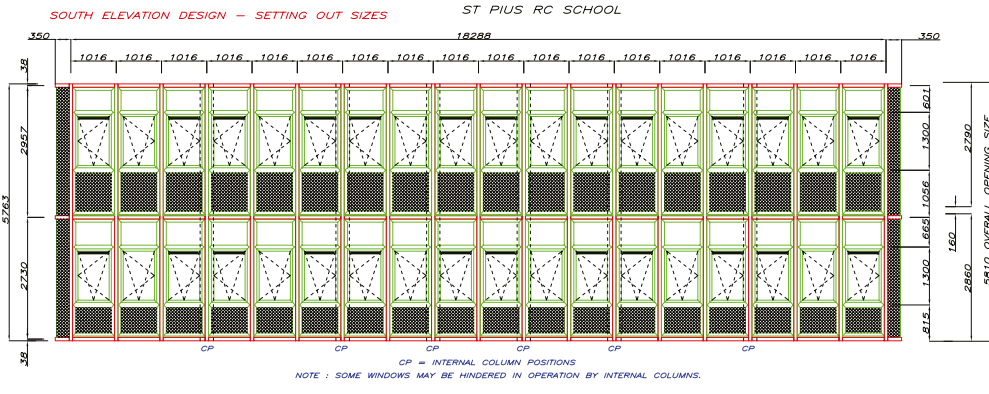
Background:

The brief involved the installation of 112 tilt & turn windows in 70mm, 360m² of curtain walling and 70mm insulated panels. The installation instantly revived a tired looking building, with a dramatic improvement aesthetically from external and internal perspective.

Benefits:

- Attractive curtain walling covering large area of fenestration
- Watertight and draught proof windows and doors
- Attractive appearance and functional
- Improved thermal efficiency
- Lower fuel bills through heat saving design
- Low maintenance costs.





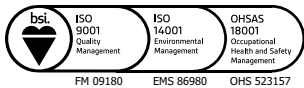
For further information

call 01952 290910

Email: specifier@profile22.co.uk

www.profile22.co.uk

Profile 22 Systems, Stafford Park 6, Telford, Shropshire, TF3 3AT



BS EN 12608
KM12895
PROFILE



BS EN 12608/PAS24
KM33523
ENHANCED SECURITY
WINDOW SYSTEMS
SUPPLIER



BS EN 12608/PAS24
KM56791
ENHANCED SECURITY
DOOR SYSTEMS
SUPPLIER



BS 8529/PAS24
KM594776
ENHANCED SECURITY
DOOR SYSTEMS
SUPPLIER

PROFILE 22 is an international PVC-U profile system supplied to local independent manufacturers and installers who contract to install windows, doors and conservatories. PROFILE 22 SYSTEMS cannot be held accountable for manufacture or installation by independent companies. All information in this publication is provided for guidance only and is given in good faith. As it is company policy to continually improve products, methods and materials, changes of specification may be made from time to time without prior notice. This statement does not affect your statutory rights. © PROFILE 22. Part of the Epwin Group Plc. PR017406

