



The Brighter Choice

Lighting for warehouses

From loading areas to walkways and racking aisles to car parks



INSIDE THE WAREHOUSE

Customers expect the right goods, on-time. That requires good lighting that helps avoid mis-picks and errors.

Warehouse operators need to drive down their energy costs. We offer class-leading energy efficiency and easy-to-use controls that dim the lights down when an area is unoccupied.

Employers and employees benefit from good quality, flicker-free lighting. It increases productivity and reduces eye-strain, fatigue and absenteeism.



Pedestrian exit
The LEXINGTON PRO exit sign provides clear visibility at distances up to 30m



Walkway
NEBRASKA PRO is IP65 and IK10 rated, ideal for emergency lighting over walkways inside and around warehouses



Mezzanine area
PHOENIX – suitable for lower ceilings



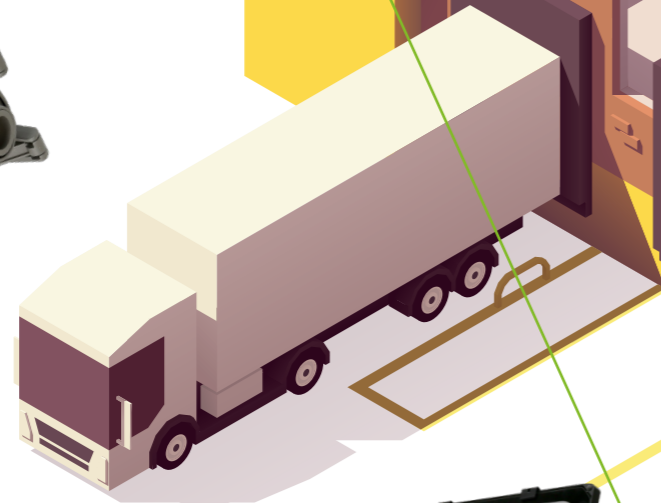
Racking aisles
OREGON, for 5m+ mounting heights, with a choice of optics for narrow and standard racking aisles and built-in emergency and sensor options



Harsh environments
GREENLAND IP66 & IK10 for areas exposed to moisture, dust and the risk of impact



Car park
The BELFRY has a neat profile and precise light distribution for illuminating car parks cost effectively



Loading area
The LYNX asymmetric floodlight is ideal for mounting on walls or post-tops for area illumination.



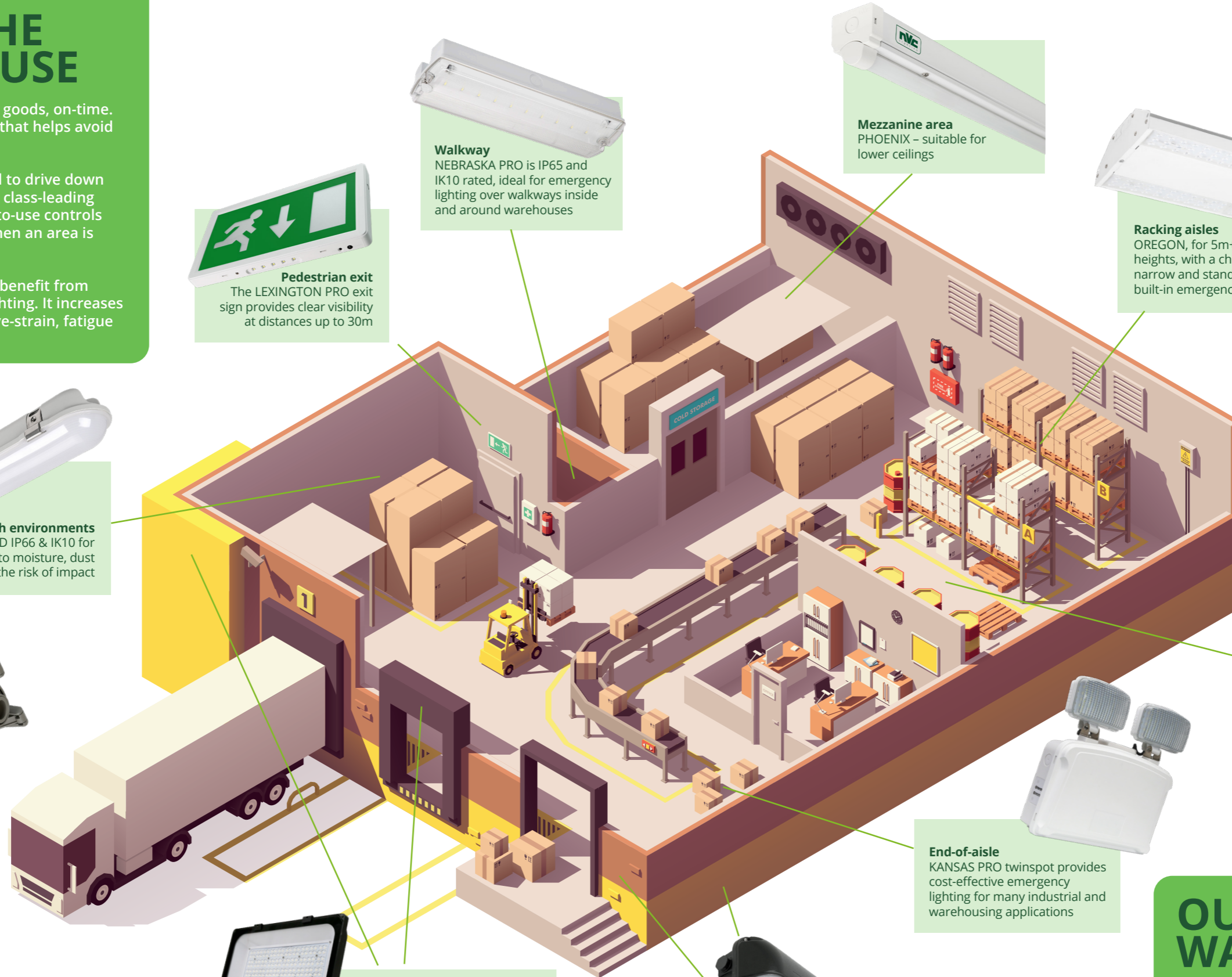
Building perimeter walkway
BRONX is a heavy duty fitting, vandal resistant, suitable for lighting walkways and perimeters



End-of-aisle
KANSAS PRO twinspace provides cost-effective emergency lighting for many industrial and warehousing applications



Marshalling area
JUPITER, for wide-area general lighting at 5m+ mounting heights



OUTSIDE THE WAREHOUSE

Safety is the primary concern. Vehicles, pedestrians and 24 hour operations can be a dangerous combination. Good lighting that eliminates any dark corners mitigates the risks.

Security mustn't be overlooked. Our lighting can illuminate entrances and perimeters to deter intruders.

INSIDE THE WAREHOUSE

Warehouses come in all shapes and sizes – so lighting solutions need to be adaptable too. Our warehouse lighting can cater for high and low mounting heights, wide areas and narrow aisles, ambient and chilled storage, wet and dirty areas and offices too.

Our extensive UK operation includes an experienced and qualified in-house lighting design team who utilise a range of market-leading tools including DIALux and Relux. They help our customers to choose appropriate lighting schemes that include the right fittings, configurations and installation options to achieve their lighting objectives for new build and refurb projects.

When we advise a client on their warehouse lighting we consider the height of the racks and the width of the aisles.

The **JUPITER** high-bay is designed to provide shadow-free illumination over wider areas, like the packing and marshalling zones.

Our **OREGON** fitting is designed to light the front of each rack, from floor to ceiling.



JUPITER



OREGON

For lower ceilings, narrow aisles and mezzanine areas the **PHOENIX LED batten** range is ideal.

For wet, dirty and dusty areas, or where there is a risk of impact, our **GREENLAND** fitting is perfect. IP66 and IK10 rated it is suited to the harshest of environments.



PHOENIX



GREENLAND



Warehouse aisles are often unoccupied for long periods. OREGON, PHOENIX and GREENLAND are all available with sensors that will dim the lights down or switch them right off if nobody is present.



AFTER

J Barbour & Sons Limited

Barbour, makers of the famous wax jackets, needed to upgrade the lighting in their main warehouse.

The old installation gave light levels that were not compliant with current standards and the fittings were vulnerable to being hit when the shelves were stacked high. This was causing outages and further reductions in the light levels.

NVC proposed a solution based on the GREENLAND fitting. In total some 400 of these have now been installed and the benefits are impressive. The light levels are substantially improved, there have been some big energy savings and the fittings (because they are IK10 rated) are withstanding the occasional impact, so maintenance costs have been completely eliminated



BEFORE

EMERGENCY LIGHTING FOR WAREHOUSES

Warehouses require emergency lighting and we have a full range available. All the emergency lighting listed here uses the latest lithium iron phosphate battery technology.



KANSAS PRO



LEXINGTON PRO



NEBRASKA PRO

- **Longer lasting.** Lithium batteries last 8+ years and we warrant them for 7 years. NiCd batteries last up to only 4 years and they are not warranted.
- **Safer.** Because lithium batteries last longer they are a more reliable way to guide people to an exit.
- **More efficient.** Lithium batteries lose only 3-5% of their charge per month. NiCd batteries lose up to 20% per month.
- **Greener.** Cadmium is highly toxic and already banned in most applications. Lithium is less toxic and fully recyclable.
- **Less waste.** Because lithium batteries last at least twice as long as NiCd there is 50% less waste.

LITHIUM

7
SEVEN YEAR
WARRANTY

To find out more about LiFePO₄ battery technology please click [here](#)



ICEL endorsement is available across our emergency range. ICEL endorsement is the highest assurance available that the fitting is designed and manufactured to comply with the latest regulations.

EMERGENCY LIGHTING SYSTEMS FOR WAREHOUSES

By law, all emergency lighting must have a short functional test every month and a full 3 hour test every year. We offer 3 solutions:

Manual test

For smaller installations, manual testing with a key-switch is practical.

Self-test

For larger installations, self-test is cost effective.

Self-test fittings conduct their own test without human intervention. A tri-colour LED on each fitting indicates its status.

Self-test is simple to install because no key switches are required, and there is no commissioning either.

Self-test is an option on all our emergency fittings.

Addressable self-test

An addressable system is ideal for large installations. Each fitting tests itself and then, using DALI, reports its status back to a central control point where all faults are logged and reported. Our LightBox Solo and LightBox Express systems provide cost-effective and flexible addressable test solutions.

For details, please click [here](#) or contact us for [advice](#)

LIGHTING OUTSIDE A WAREHOUSE

Safety is critical. Moving vehicles, pedestrians and shift working are a potentially hazardous combination, so good lighting is essential.

Security is important too. People and vehicles coming and going, open doors and loading bays – these present rich pickings for the unobserved intruder.



BRONX SLIM

BRONX is designed for perimeter and pathway lighting. Its IK10 construction makes it vandal resistant and it can be fitted with a dusk/dawn sensor for round-the-clock operation.

LYNX is ideal for the outside of the loading bay. Its asymmetric distribution throws the light across a wide area.



BELFRY

BELFRY is a premium quality fitting for car parks and approach roads. The wide light distribution helps ensure even illumination and no dark spots



LYNX



Our extensive UK operation includes an experienced lighting design team who use DIALux and Relux to help our customers choose the right lighting. This will include recommending the most suitable fittings, in the right wattage and configuration to achieve the correct light levels for each area in a project. Whether the requirement is purely for like for like swaps to meet energy saving requirements, or for thousands of bespoke fittings for a sophisticated design to meet regulatory and aesthetic requirements, our lighting designers will ensure that the optimum solution is specified.

SENSORS & CONTROLS FOR WAREHOUSES

We have 5 levels of sensor and control options, 3 of which are especially suited to warehouse projects. For a general introduction to lighting controls, please check [here](#)

LEVEL 1 ONE SENSOR PER FITTING

The following luminaires are available with a sensor mounted on or in the fitting. The sensor controls just the fitting on which it is mounted.

OREGON – available with:

- o Passive infrared motion sensor mounted in the fitting for on/off control, or
- o Passive infrared motion sensor mounted in the fitting for on/off and dimming in response to natural light levels (**daylight harvesting**)

GREENLAND – available with:

- o Micro wave motion sensor fitted internally for on/off control.

PHOENIX – available with:

- o Micro wave motion sensor ordered separately and fitted externally for on/off control. IP20.
- o Passive infrared motion sensor ordered separately and fitted externally for on/off control. IP65.



For more information on our, one sensor per fitting controls, please visit [here](#)

SENSORS & CONTROLS FOR WAREHOUSES

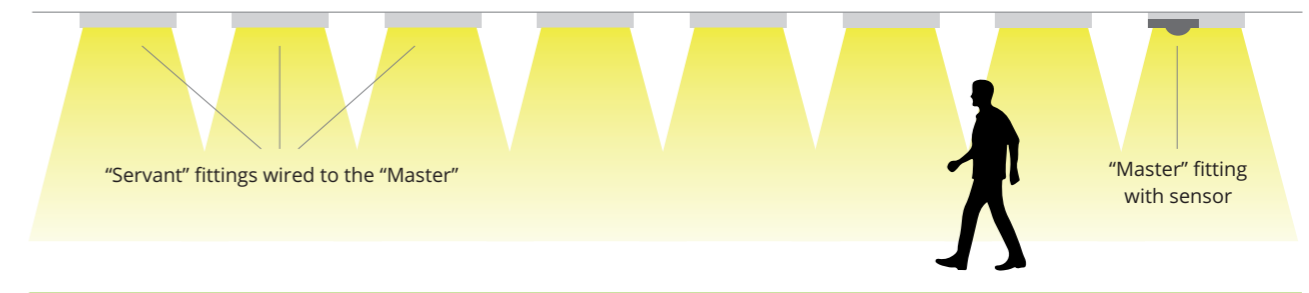
MASTER-SERVANT CONTROLS

LEVEL 2

In some installation it will be expensive to fit a sensor in every fitting, so adopting a master/servant approach can be cost effective. The OREGON is well suited to this; "master" fittings could be specified with /PIRD (so would be supplied complete with a PIR sensor with a DALI output and a DALI driver) and the servant fittings would be specified with DD (a DALI driver). On installation, the contractor should wire the DALI output from the sensor in the "master" to the DALI input on the driver in each of the "servants".

Master / Servant operation

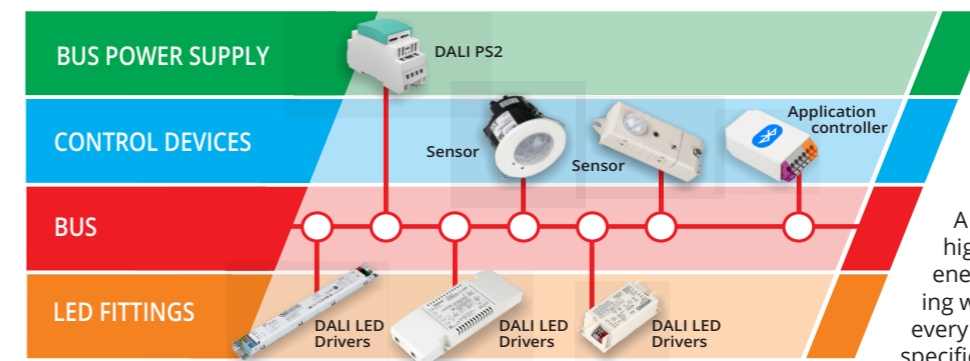
The whole row of servant fittings switch on as soon as the person moves under the master fitting at the start of the row



For more information on master/servant controls, please visit [here](#)

DALI NETWORKED CONTROLS - WIRED

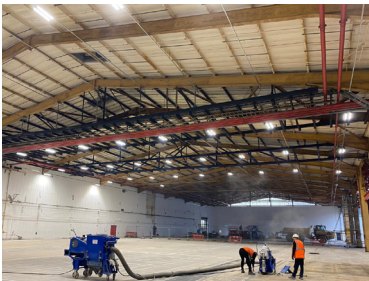
LEVEL 4



A DALI network solution will be suitable in larger installations. It increases the level of flexibility that can be implemented compared to levels 1 and 2, offering multiple lighting groups and control points.

A DALI network solution can provide the highest levels of control, flexibility and energy saving. Some specialist commissioning will be required, but we can guide you every step of the way, from system design, specification, ordering and installation.

For more information on DALI networked controls, please visit [here](#)



t: +44 (0)121 457 6340
 e: sales@nvcuk.com or technical@nvcuk.com
 www.nvcuk.com

