

# Joint Sealants for Windows & Façades



**TREMCO**  
**i illbruck**





# Window Installation & Façade Sealing Systems

# Leaders in Window & Façade Sealant Technology

## Experience & Reliability

With a heritage spanning some 80 years, Tremco illbruck is recognised across Europe as a leader in the sealing and protection of the built environment. Providing sealant solutions for the complete building envelope, we have gained a detailed understanding of the demands faced in all of Europe's climatic zones.

## Innovation for Tomorrow

Market leaders thrive on innovation, and Tremco illbruck is no exception. Innovation has been the common thread throughout our company's history. Today more than ever before the key challenge is to incorporate the latest research into new products that aim to exceed our customers' expectations and to come up with system solutions and extensive services that simply make life easier.

Our five European R&D centres work closely with leading window and façade producers and internationally recognised testing institutes to deliver solutions that not only meet today's legislation and building standards but set new benchmarks for the future.

## Solutions for Sustainable Buildings

Sustainability is a topic ingrained in the culture and daily business practice of Tremco illbruck. Utilising responsible chemistry and exceptional manufacturing processes; our vision is to conserve resources and minimise our environmental impact to support and enhance healthy vibrant communities.

We are committed to providing innovative, integrated products and services that contribute to high performance, efficient outcomes for the built environment and take into account the impact on people, energy and resources.

New build is an important part of the overall picture but we recognise that it is the current and ageing building stock which can offer the greatest opportunity for energy savings and CO<sub>2</sub> emission reductions. Our products and systems are designed for both new build and refurbishment applications.

We can help the architect and contractor to build in a more sustainable way through the use of products and systems outlined in this brochure.

| Product Listings             |    |
|------------------------------|----|
| Joint Sealing Tapes          | 9  |
| Membranes                    | 13 |
| Butyl-based Sealant Tapes    | 16 |
| Primers & Adhesion Promoters | 17 |
| High Performance Adhesives   | 18 |
| Window Foams                 | 20 |
| High Performance Sealants    | 22 |
| Structural Glazing Sealants  | 24 |
| Fire-Rated Sealants          | 26 |

## Working with Leaders in the Industry

Tremco illbruck believe it essential to stay at the forefront of industry developments.

With this mind, we are actively involved in a number of trade organisations.







## Tailored Systems & Solutions



# Innovative Façade Sealing

## Façade Joints – Small Details with a Critical Function

The integrity of the façade is crucial to the performance of the overall building. Whilst a great deal of attention is lavished on the primary materials of the façade, frequently less time is devoted to the critical areas of the movement joints and the interfaces between similar and dissimilar materials. Joints are inevitable in buildings, whether as designed in movement joints or as the connection between different construction materials.

Weather protection, freedom to move and ability to breathe are vital to the long term survival of your construction and can be compromised through incorrect sealing materials or systems. Expert joint sealing with the right materials is crucial.

Tremco illbruck offer a range of products for sealing the wide range of joints in any façade. Our products and systems are designed to prevent the negative impact of wind driven rain, uncontrolled leakage of air and heat, and the build-up of condensation whilst adequately accommodating the designed movement of the structure.

## Tailored Solutions & Systems for Your Façade

Not all façade types are the same. Natural stone, concrete, brick, glass and cladding each bring their own challenges and that is why we offer an unrivalled portfolio of products to ensure we can offer the system that offers the best fit for your structure and the environment which it is located in.

### Our portfolio of products includes:

- Impregnated sealing tapes
- Expanding foams
- Window membranes
- Elastomeric sealants



## Support for You

- Detailing recommendations
- Method statements
- Product certifications
- Specifications including NBS
- Members of RIBA CPD Providers Network
- CAD drawings
- Expert on-site support
- Recommended contractors
- Warranties





# High Performance Window Installations

## Energy Efficient Installation for Energy Efficient Windows

### Intelligent Seals for Airtight Internal & Weathertight External Joints

As building regulations change, new solutions and practices are required. The problem of uncontrolled air leakage from buildings has grown in recognition with the amendments to Part L in 2006 and 2010 requiring energy reduction targets to be addressed and the incorporation of mandatory air leakage testing.

Highly rated windows are now invariably specified and to maximise this investment, Tremco illbruck offer a range of products to ensure that the benefits arising from such selection are complemented by a high quality installation. The illbruck i3 system enables performance to the highest standard and will restrict air leakage to below 1 m<sup>3</sup>/hr.m<sup>2</sup> @ 50 Pa, ensuring compliance with Code Level 6 and Passive House standards.

The innovative “i3” system encompasses the concept of sealing out weather whilst sealing in comfort and energy savings. It incorporates a choice of products to effectively seal on three levels: Weather tight (but breathable) externally, air tight internally, with a thermal and acoustic insulation layer between.

By selecting the appropriate products, a simple, cost effective installation will benefit the building owner / occupier for years to come and the long-term savings can be enjoyed by many.

Typical example of the i3 system is comprised of:

**illbruck Compriband TP600** - an impregnated foam tape which forms a breathable external weathertight seal.

**illbruck FM230 Window Seal Foam** - a PU Expanding Foam which insulates giving the installation improved thermal and acoustic performance

**illbruck ME500 Duo Flexible Membranes** - intelligent membranes used internally to create an airtight installation.

With the “i3” Window Sealant System, Tremco illbruck can provide a state-of-the-art universal sealing system for the perimeter sealing of windows. Other i3 system options are given on page 7.

### State-of-the-Art Window Sealing!

Provides . . .



**Weather seal for wind-driven rain**



**Vapour permeability**



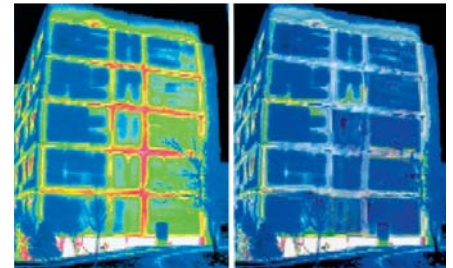
**Thermal insulation**



**Acoustic insulation**

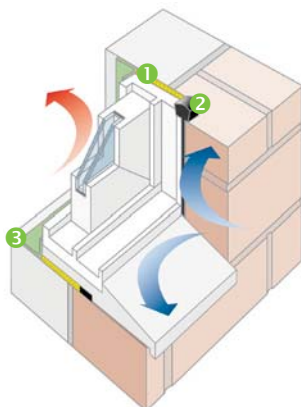


**Internal airtight seal**

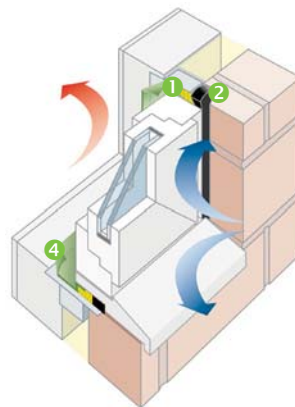


Before & After: This thermal image shows less heat escaping after the installation of Compriband TP600

## The Tremco illbruck BBA Approved i3 System



Sash window in a check reveal using the i3 system



Traditional casement window detail with the i3 system



- ① illbruck FM230 Window Seal Foam
- ② illbruck Compriband TP600
- ③ illbruck ME500 Duo Flexible Window Membrane E
- ④ illbruck ME500 Duo Flexible Window Membrane W

# The i3 Window Sealant System

## How it works: “inside tighter than outside”

Proper sealing is an effective interaction of the outer, middle, and inner sealing levels on the principle of “inside tighter than outside.” By selecting appropriate products from our six system components, various combinations can be created to suit the installation situation. The resulting system will meet all the requirements of modern sealing technology.

### The result:

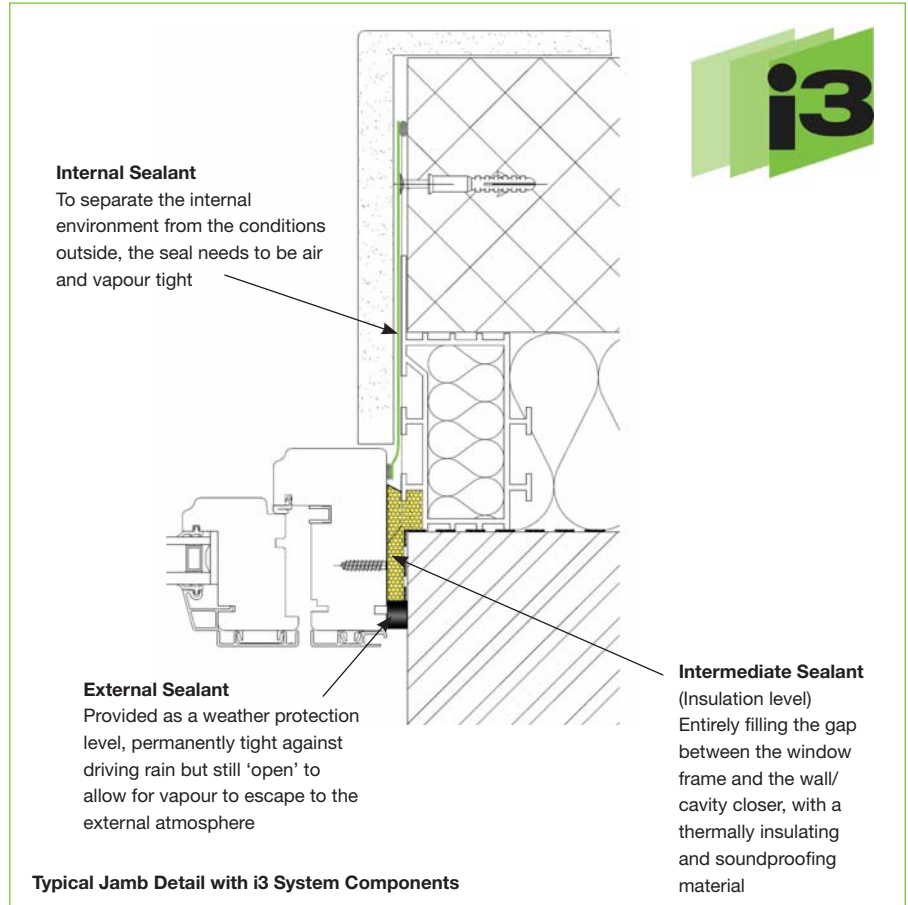
An externally weatherproof but breathable system, which also prohibits the warm, internal air penetrating the joint and forming condensation, a problem which can lead to a reduction in the level of thermal insulation, damage to building components and mould formation.

- a) Exceeds 600 Pa driving rain tightness, per DIN EN 1027 and DIN 18542
- b) Effective filling and insulation of the window joint seal
- c) Airtight to UK Building Regulations and DIN 18542 & DIN EN 1026. Also meets Passive House air tightness requirements.

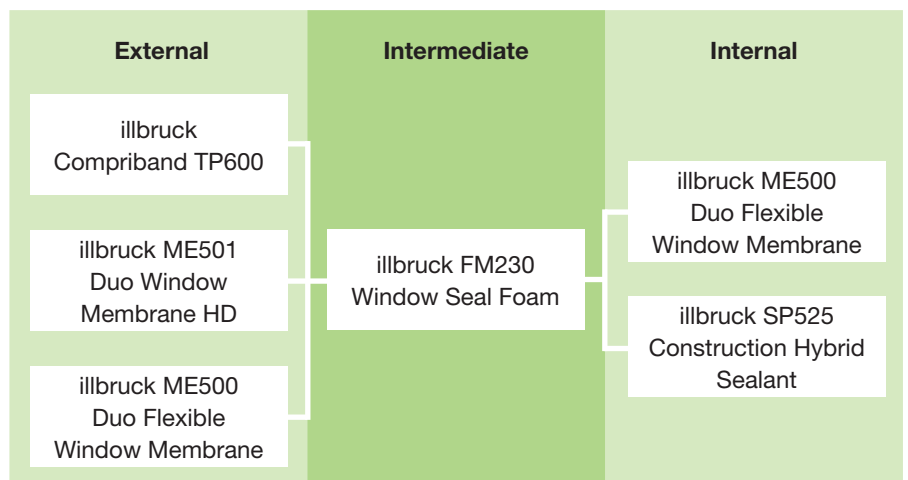
### 10-year “i3” performance guarantee\*

The “i3” Window Sealant System from illbruck comes with a 10-year guarantee\* for the performance of the joints.

\* Under the conditions specified by Tremco illbruck - available on request



## i3 System Options







**Taking Window Efficiency  
to a New Level**



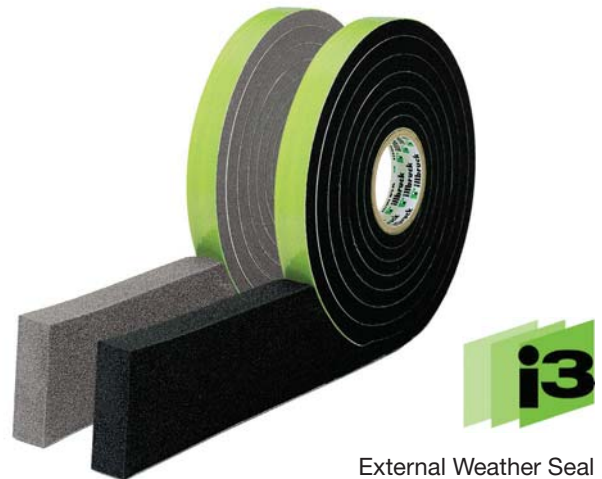
# Joint Sealing Tapes



## Compriband TP600

### Impregnated Joint Sealant Tape

illbruck Compriband TP600 is an open-cell, flexible polyurethane foam sealant, impregnated with a flame retardant acrylic resin, providing a high performance weather seal. It is pre-compressed and ready for use with a self-adhesive backing to aid location. After positioning, the material expands to create a permanent elastic seal. It remains flexible throughout its life and responds to the expansion/contraction cycles caused by thermal and structural movement.



#### Typical Uses

illbruck Compriband TP600 is designed for external or internal use for the linear sealing of movement joints in a wide variety of applications including:

- Brickwork and blockwork
- Pre-cast concrete panels
- Curtain wall applications
- Door and window - perimeter seal
- Linear joints between roofing and cladding panels
- Timber framed structures

#### Product Benefits

- In excess of 600 Pa driven rain tightness
- Provides weatherproof but breathable joints
- Thermal/sound/vibration insulator
- Tape can be used in joints with variable widths - allowing for building tolerances or movement
- Compatible with most sealants/building materials
- Resistant to attack by fungus, insects or vermin
- Extensively tested to DIN and MPA Bau Hannover standards
- In-service life expectancy up to 25 years
- 10 year warranty\*\*

#### Colour

Anthracite or Grey

#### Size Availability

| Size Order N°<br>Tape Width / Tape<br>Thickness* | For Joint<br>Depth#<br>(mm) | For Joint<br>Width<br>(mm) | Roll<br>Length<br>(m) |
|--------------------------------------------------|-----------------------------|----------------------------|-----------------------|
| 10/2                                             | 10                          | 2                          | 12.5                  |
| 10/3                                             | 10                          | 3                          | 10.0                  |
| 10/3-7                                           | 10                          | 3-7                        | 8.0                   |
| 15/3-7                                           | 15                          |                            |                       |
| 20/3-7                                           | 20                          | 5-10                       | 5.6                   |
| 15/5-10                                          | 15                          |                            |                       |
| 20/5-10                                          | 20                          |                            |                       |
| 15/7-12                                          | 15                          | 7-12                       | 4.3                   |
| 20/7-12                                          | 20                          |                            |                       |
| 15/8-15                                          | 15                          | 8-15                       | 3.3                   |
| 20/8-15                                          | 20                          |                            |                       |
| 20/10-18                                         | 20                          |                            |                       |
| 25/10-18                                         | 25                          | 10-18                      | 6.5                   |
| 30/10-18                                         | 30                          |                            |                       |
| 20/13-24                                         | 20                          |                            |                       |
| 25/13-24                                         | 25                          | 13-24                      | 5.2                   |
| 30/13-24                                         | 30                          |                            |                       |
| 30/17-32                                         | 30                          |                            |                       |
| 35/17-32                                         | 35                          | 17-32                      | 4.0                   |
| 40/28-40                                         | 40                          |                            |                       |

\* Other sizes available to order

\*\* Under the conditions specified by the manufacturers, available on request

# NOTE: Actual joint depth should be 2 mm greater than shown to allow for set back of tape within joint

# Joint Sealing Tapes

## TP450 Compriband Timber Max

### Impregnated Sealing Tape for Joints with Significant Movement

illbruck TP450 Compriband Timber Max is an impregnated joint sealing tape specifically designed for extreme movement accommodation. It is used in a wide variety of movement joints where a weather tight seal is required.

#### Typical Uses

The product is particularly suitable as an external perimeter weather seal to the head and cill of windows installed in multi-storey timber frame construction where differential movement can occur.

#### Product Benefits

- Can accommodate up to 37 mm movement
- Weather seal for wind-driven rain on buildings up to 20 m high (6 storeys)

- Minimum 450 Pa driving rain tightness at maximum expansion
- Breathable - for vapour diffusion
- Continually expands and contracts to accommodate movement whilst still sealing the joints.
- Thermal and acoustic insulation

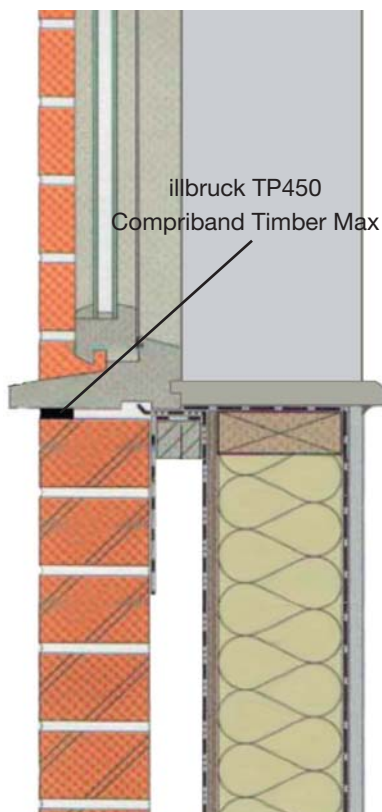
#### Colour

Black



#### Size Availability

| Size     | Joint Width (mm) | Tape Width (mm) | Roll Length (mm) |
|----------|------------------|-----------------|------------------|
| 40/13-40 | 13-40            | 40              | 5.2              |
| 50/13-50 | 13-50            | 50              | 5.2              |





## TP601 Compriband e

### Impregnated, Pre-compressed Foam Sealing Tape

illbruck TP601 Compriband e is an impregnated, open-cell polyurethane foam tape, pre-compressed and encapsulated within a polypropylene film. The outside of the film, along one edge of the tape, is fitted with a self-adhesive strip to aid positioning of the tape.

illbruck TP601 Compriband e can be applied on site or to pre-assembled components with activation during or after the site installation. The seal is activated by tearing along the film perforation, releasing the tape from its encapsulation and allowing it to expand naturally (acting like a spring) against the joint walls to form an effective external seal.

#### Typical Uses

illbruck TP601 Compriband e is designed for use as a 600 Pa weatherproof seal around windows, doors and similar building elements.

#### Product Benefits

- Subsequent activation not temperature dependant
- 600 Pa weatherproof seal (to DIN EN 12208 (9A) & EN 1027)
- Compatible with standard construction materials
- Fully UV Stable
- Factory or site applied

#### Colour

Grey

Joint size 3-7 is also available in black.

Film available in Transparent.



#### Size Availability

| Tape Number | Overall Tape Width (mm) | For Joint Sizes (mm) | Thickness (mm) In State A* | Thickness (mm) In State B* | Metres per Spool |
|-------------|-------------------------|----------------------|----------------------------|----------------------------|------------------|
| 5/50        | 17                      | 3-7                  | 3                          | 4-5                        | 50               |
| 5/200       | 17                      | 3-7                  | 3                          | 4-5                        | 200              |
| 7/50        | 17                      | 5-10                 | 5                          | 6-7                        | 50               |
| 7/200       | 17                      | 5-10                 | 5                          | 6-7                        | 200              |
| 9/50        | 17                      | 7-12                 | 7                          | 8-9                        | 50               |
| 9/100       | 17                      | 7-12                 | 7                          | 8-9                        | 200              |

\* State A = tape used fresh from the spool (site applied).

\*\* State B = tape removed from spool for > one week but not yet activated (factory applied).

# Joint Sealing Tapes

## TP652 Compriband Trio Plus

### Impregnated, Pre-Compressed Multi-Functional 3-Level Sealing Tape

illbruck TP652 Compriband Trio Plus is an impregnated, pre-compressed multi-functional sealing tape which has been developed to meet the increased demands of Passive Houses, new construction and refurbishment projects.

#### Typical Uses

It is used to seal window and door connecting joints against wind and driving rain while providing thermal insulation for the entire installation depth and an airtight internal barrier. The product can also be used for sealing panel joints in for example off-site construction. illbruck TP652 Compriband Trio Plus ensures breathable sealing in accordance with the 'inside tighter than outside' principle.

#### Product Benefits

- Large number of multi-functional uses (from Passive Houses to refurbishment projects)
- Approx. 80% time savings during assembly because one product is used for inner, intermediate and outer sealing
- Resistant to driving rain, thermally insulated and airtight
- Emission-free, suitable for indoor use (emission test in accordance with the AgBB/DIBt method)
- Modern management of dampness and vapour control

#### Colour

Anthracite

Interior: anthracite/grey with charcoal-grey powder



#### Size Availability

| Passive House <sup>2</sup><br>Joint Gap (mm) | Joint Depth <sup>1</sup> (mm) | m/roll |
|----------------------------------------------|-------------------------------|--------|
| 6 - 10 (S)                                   | 58                            | 8.00   |
| 6 - 10 (S)                                   | 66                            | 8.00   |
| 6 - 10 (S)                                   | 77                            | 8.00   |
| 6 - 10 (S)                                   | 88                            | 8.00   |
| 8 - 15 (M)                                   | 58                            | 6.00   |
| 8 - 15 (M)                                   | 66                            | 6.00   |
| 8 - 15 (M)                                   | 77                            | 6.00   |
| 8 - 15 (M)                                   | 88                            | 6.00   |
| 10 - 20 (L)                                  | 58                            | 5.00   |
| 10 - 20 (L)                                  | 66                            | 5.00   |
| 10 - 20 (L)                                  | 77                            | 5.00   |
| 10 - 20 (L)                                  | 88                            | 5.00   |
| 15 - 30 (XL)                                 | 58                            | 3.00   |
| 15 - 30 (XL)                                 | 66                            | 3.00   |
| 15 - 30 (XL)                                 | 77                            | 3.00   |
| 15 - 30 (XL)                                 | 88                            | 3.00   |

Dimension tolerance in accordance with DIN 7715 P3.

1 illbruck TP652 Compriband Trio Plus should completely fill the window depth less 2 mm set back to each face.

2 UV-resistant



# Window Membranes



## ME500 Duo Flexible Window Membrane

### Intelligent Seal for Airtight Internal & Weathertight External Joints

illbruck ME500 Duo Flexible Window Membrane comprises a tear-proof woven fleece fabric with a polyethylene copolymer film. Membrane 'E' has fixing options on the same side of the membrane and is designed for application after the window is installed. Membrane 'W' has fixing options on opposite sides of the membrane and is designed for application before the window is installed. An integrated movement pleat is included in the membrane which complies with the planning and installation recommendations of DIN 4108-7 and with the RAL Quality Assurance Association for windows and doors. Also meets DIN EN1026 (air tightness), DIN EN 1027 (weather tightness) and DIN 18542.



Internal Air Seal  
External Weather Seal

#### Typical Uses

The product has a specially designed reactive membrane whereby the water vapour permeability (sd value) changes depending on the humidity inside the joint. This allows the product to perform as an intelligent seal for airtight internal joints, and weathertight, breathable external joints. The intelligent reactive system ensures that the joint always dries at the maximum rate. Suitable for many typical interface details.

#### Product Benefits

- The variable sd value ensures that the joint dries out quickly, thus protecting against mould and moisture damage
- Single product acts as internal airtight seal and external weathertight but breathable seal
- Large expansion pleat for variable joint sizes and absorption of movement
- Easy fixing to frame and structure - see fixing options in table

#### Colour

Grey

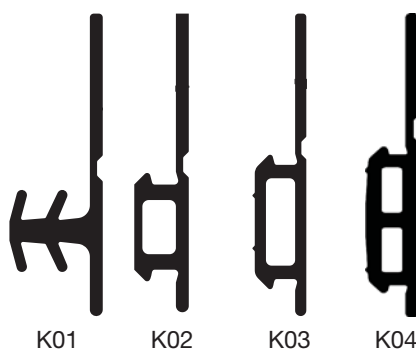
#### Fixing Options

Optional fixing methods include: integral self-adhesive strips, gaskets or plaster mesh.

| Membrane | Location  | Integral Self-Adhesive Acrylic | Integral Self-Adhesive Butyl | Integral Gasket | Site Applied Adhesive SP525 | Integral Plaster Mesh |
|----------|-----------|--------------------------------|------------------------------|-----------------|-----------------------------|-----------------------|
| E        | Frame     | ✓                              | ✗                            | ✗               | ✗                           | ✗                     |
|          | Structure | ✗                              | ✓*                           | ✗               | ✓                           | ✓                     |
| W        | Frame     | ✓                              | ✗                            | ✓               | ✗                           | ✗                     |
|          | Structure | ✗                              | ✓*                           | ✗               | ✓                           | ✓                     |

\* may require primer: ME901 or ME902

#### Gasket Options



#### Size Availability

| Width (mm)  | Rolls per Carton | Total m per Carton |
|-------------|------------------|--------------------|
| E 80 - 110  | 5                | 250                |
| E 110 - 140 | 3                | 150                |
| E 140 - 170 | 2                | 100                |
| W 60 - 80   | 6                | 300                |
| W 80 - 110  | 5                | 250                |
| W 110 - 140 | 3                | 150                |

# Window Membranes

## ME501 Duo Window Membrane HD

### High Performance Membrane for Interior & Exterior Use

illbruck ME501 Duo Window Membrane HD is a tear-proof, polyethylene copolymer film with woven fabric. Due to the variable sd-value, the membrane is suitable for interior and exterior use and can provide an airtight or weathertight (but breathable) seal. The product meets the recommendations of the RAL Quality Assurance Association for windows and doors. Successfully tested by MPA Hannover to DIN EN1026 (air tightness) & DIN EN1027 (weather tightness).

#### Typical Uses

illbruck ME501 Duo Window Membrane HD provides a high performance seal to the interface between windows / curtain walling and the structure.

#### Product Benefits

- Complies with principle of 'inside tighter than outside' in order to facilitate efficient vapour control
- Excellent drying potential (moisture is allowed to escape due to the membrane's breathability) avoiding mould growth and physical damage
- UV stable - will tolerate up to 9 months direct exposure prior to covering
- High strength, tear resistant
- Membrane can be applied before or after window installation to suit on-site details and programming
- Also with fixing options, including: gaskets, integral self-adhesive butyl strip or Tremco SP525

#### Colour

Black

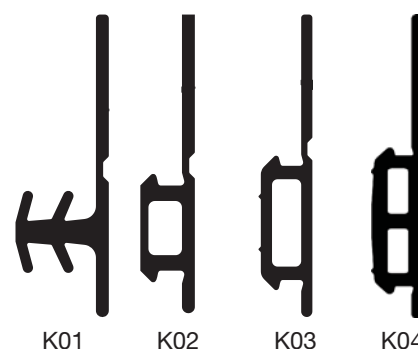


External Weather Seal

#### Size Availability

illbruck ME501 Duo Window Membrane HD is available in widths of 60 mm to 1500 mm in 25 metre rolls. Metres per box varies dependant on roll width.

#### Gasket Options



#### Fixing Options

Optional fixing methods include: integral self-adhesive strips or gaskets.

| Location  | Integral Self-Adhesive Butyl | Integral Gasket | Site Applied Adhesive SP525 |
|-----------|------------------------------|-----------------|-----------------------------|
| Frame     | ✓*                           | ✓*              | ✓                           |
| Structure | ✓*#                          | ✗               | ✓                           |

\* special order – allow 3 – 4 weeks for delivery & minimum quantity

# may require primer: ME901 or ME902



# Window & Façade Membranes

## ME220 Elastomeric EPDM Membrane

### For Sealing Interfaces to Provide Airtight or Weather Tight Seals

illbruck ME220 is an EPDM-based membrane used for sealing interfaces to provide airtight or weather tight seals. The material does not contain any solvents which could later migrate into adjacent surfaces.

#### Typical Uses

illbruck ME220 EPDM Membrane is used for weather sealing the exterior side of the connecting joint between a window or façade construction and an adjacent structure (eg. wall, concrete panel, steel frame, etc.) or to provide an internal airtight barrier in a similar detail.

If an internal and external membrane is required, in order to meet the principle of 'inside tighter than outside', illbruck ME220 should be located as the inner membrane and illbruck ME501 Duo Window Membrane HD as the outer membrane. This will ensure that the inner seal is more vapour tight than the outer which will facilitate drying out of any entrapped moisture between the two layers.

#### Product Benefits

- High resistance to mechanical damage
- Excellent movement capability in both transverse and longitudinal direction
- Excellent weathering, ageing and UV radiation resistance
- Excellent moisture vapour barrier
- Wide ranging installation capabilities in non-standard details
- Excellent material recovery after elongation
- Variety of fixing options available - see table
- TZUS - Certificate of detail installation compliance with:
  - CSN EN 12207 airtightness
  - CSN EN 12208 water resistance
  - CSN EN 12210 windloading

#### Colour

Black

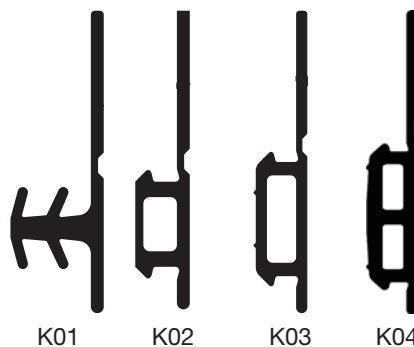
#### Size Availability

Roll length  
 20 m (1st option right) or  
 25 m (2nd & 3rd options right)  
 Thickness 0.7 - 0.75 mm\*  
 Width 50 - 1,500 mm.  
 Cut rolls or full log 1,500 mm

\*1.2 mm also available subject to minimum order quantity

Standard width tolerance for cut dimensions approximately 1 mm, thickness tolerance approximately 10%.

#### Gasket Options



#### Fixing Options

Optional fixing methods include: integral self-adhesive strips or gaskets.

| Location  | Integral Self-Adhesive Acrylic | Integral Self-Adhesive Butyl | Integral Gasket | Site Applied Adhesive CT113 | Site Applied Adhesive OT015 |
|-----------|--------------------------------|------------------------------|-----------------|-----------------------------|-----------------------------|
| Frame     | ✓                              | ✗                            | ✓               | ✓                           | ✓                           |
| Structure | ✗                              | ✓*                           | ✗               | ✓                           | ✓                           |

\* may require primer : ME901 or ME902

# Butyl-Based Sealant Tapes

## ME404 Butyl Tape Fleece

### Fast, Secure Airtight Sealing of Perimeter Window Joints

illbruck ME404 is a solvent free, self-adhesive, plastic-elastic, butyl rubber sealing tape with high adhesive strength, laminated on one side with a plastic non-woven fleece. Butyl Tape Fleece is stable in form in the longitudinal direction, while in the transverse direction it has a permanent movement capacity of up to 10%.

#### Typical Uses

It is used for sealing joints, seams, and cracks in internal window perimeter connections with metal and sheet metal structures (e.g. sealing segment elements on metal structures) or in covered roof areas (not UV resistant).

#### Product Benefits

- Adheres without primer to a wide variety of substrates
- Can be painted or plastered over
- 10% permanent movement capacity in the transverse direction

#### Colour

Grey



#### Size Availability

| Width x Thickness (mm) | Roll Length (m) | Rolls per Carton | Metres per Carton |
|------------------------|-----------------|------------------|-------------------|
| 50 x 1.5               | 15              | 6                | 90                |
| 75 x 1.5               | 15              | 4                | 60                |
| 100 x 1.5              | 15              | 3                | 45                |

## ME402 Compriband Ali-Tape PB

### High Performance Sealant Tape

illbruck ME402 Compriband Ali-Tape PB is a high performance sealant tape which consists of a quality plasto-elastic butyl rubber adhesive / sealant applied to one side of an aluminised polyester film.

#### Typical Uses

illbruck ME402 Compriband Ali-Tape PB is intended for the internal and external sealing and repair of joints and overlaps in a wide variety of applications which includes amongst others shop fitting, facades, conservatories, air conditioning, and ventilation.

#### Product Benefits

- Adheres without primer to many different substrates

- Surface resistant to UV light and weathering
- Tight against gas and water vapour diffusion
- Simple, effective and easy to apply

#### Colour

Grey



#### Size Availability

| Width x Thickness (mm) | Roll Length (m) | Rolls per Carton | Metres per Carton |
|------------------------|-----------------|------------------|-------------------|
| 50 x 1.2               | 25              | 6                | 150               |
| 75 x 1.2               | 25              | 4                | 100               |
| 100 x 1.2              | 25              | 2                | 50                |
| 150 x 1.2              | 25              | 2                | 50                |



# Primers & Adhesion Promoters

## ME901 Butyl & Bitumen Primer

### Pre-Treatment Bonding Agent

illbruck ME901 Butyl & Bitumen Primer is a brush applied polymer solution for use with illbruck butyl and bitumen tapes and membranes.

#### Typical Uses

illbruck ME901 Butyl & Bitumen Primer is used as a pre-treatment bonding agent and primer when working with illbruck butyl and bitumen tapes and membranes.

#### Product Benefits

- Improves tape / membrane adhesion on cold or damp surfaces
- Stabilises unsound surfaces
- Improves weathersealing on porous substrates
- Quick drying
- Can be used down to -5°C

#### Colour

Transparent

#### Size Availability

1 litre (12 per box) and 5 litre tins.



## ME902 Butyl & Bitumen Spray Primer

### Sprayable Pre-Treatment Bonding Agent

illbruck ME902 Butyl & Bitumen Spray Primer is a spray applied polymer solution for use with illbruck butyl and bitumen tapes and membranes.

#### Typical Uses

illbruck ME902 Butyl & Bitumen Spray Primer serves as a bonding agent and primer for the application of illbruck membranes incorporating butyl and bitumen adhesives.

#### Product Benefits

- Easy spray application
- Increases final bond strength
- Improves adhesion of illbruck membranes
- Short drying time

#### Colour

Transparent

#### Size Availability

500 ml aerosol can (12 per box)



# High Performance Adhesives

## CT113

### Contact Adhesive for EPDM Membranes

illbruck CT113 is a viscous contact adhesive based on synthetic rubber and resins.

#### Typical Uses

illbruck CT113 Contact Adhesive is a special adhesive developed for the bonding of illbruck ME220 EPDM membranes, particularly in facade applications. illbruck CT113 is compatible with surfaces such as wood, metal, masonry and other building materials.

#### Product Benefits

- Ideal for bonding of illbruck ME220 EPDM membranes in facade installations
- Cured adhesive has excellent resistance to weathering and the ageing effects of UV exposure

- Adhesive accommodates a wide fluctuation in temperature from  $-20^{\circ}\text{C}$  up to  $+80^{\circ}\text{C}$
- Cures within 20 minutes to form a high strength and elastomeric connection
- High initial adhesion strength

#### Colour

Black

#### Packaging

4.7 kg pail



## OT015

### Paste Adhesive for EPDM Membranes

illbruck OT015 Paste Adhesive is a specially formulated high tack adhesive.

#### Typical Uses

illbruck OT015 is used for bonding illbruck ME220 EPDM Membrane to itself and to typical construction substrates such as aluminium, metal, zinc plated metal, wood, PVC-U, and other non-porous materials. The resultant connection provides excellent resistance to ageing, temperature changes and is waterproof.

#### Product Benefits

- Ideal for bonding of illbruck ME220 EPDM membranes in facade installations

- Cured adhesive has excellent resistance to weathering and the ageing effects of UV exposure
- Adhesive accommodates a wide fluctuation in temperature from  $-20^{\circ}\text{C}$  up to  $+80^{\circ}\text{C}$
- Easy, clean, fast and precise application

#### Colour

Black.

#### Packaging

600 ml sausage





## SP050

### Hybrid Polymer Sealant and Adhesive

illbruck SP050 is a multi-purpose sealant and adhesive based on Tremco illbruck's advanced SP hybrid polymer formulation.

#### Typical Uses

illbruck SP050 provides a high strength flexible bond in a wide variety of construction and industrial applications. It has excellent adhesion to brick, concrete, blockwork, wood, plywood, chipboard, hardboard, plasterboard, polystyrene, laminated plastics, metals and ceramics.

#### Product Benefits

- A green alternative to traditional polyurethane adhesives - does not contain solvents or isocyanates and is very low odour

- Excellent adhesion to a wide range of materials including metals, glass, PVC and concrete
- Tack free in less than 30 minutes
- Excellent weather resistance - suitable for internal and external applications
- Can be overpainted once cured
- Very good tooling properties

#### Colour

White, grey, black and brown. Other colours available subject to minimum order quantity.

Crystal clear illbruck SP030 version available, refer to the Tremco illbruck website.

#### Packaging

310 ml cartridge (12 per box)



## SP060

### High Tack Hybrid Polymer Adhesive

illbruck SP060 is a high tack hybrid polymer adhesive based on Tremco illbruck's advanced SP hybrid formulation.

#### Typical Uses

illbruck SP060 is ideal for a vast range of applications and has excellent adhesion to brick, concrete, blockwork, wood, plywood, chipboard, hardboard, plasterboard, polystyrene, laminated plastics, metals and ceramics.

#### Product Benefits

- Powerful hybrid adhesive with very high initial grab and rapid development of final bond
- SP hybrid polymer formulation is solvent free, very low odour, and chemically neutral.

- Instant grab can minimise the need for additional clamping or other mechanical supports
- Gap filling formulation forms a strong bond even with irregular or uneven substrates
- Excellent resistance to UV and weathering - suitable for internal and external applications
- Bonds almost any typical construction material including masonry, timber, polystyrene, metals, plastics and ceramics

#### Colour

White

#### Packaging

310 ml cartridge (12 per box)



# Window Foams



## FM230 Window Seal Foam

### Polyurethane Foam for Sound & Thermal Insulation

illbruck FM230 is a one component, moisture curing, polyurethane foam which is gun applied.

#### Typical Uses

illbruck FM230 is particularly suited for thermal and sound insulation around window and door frames. MPA tested elasticity and 'winter foam' guarantee in application temperatures as low as 0°C. Suitable for cavity filling, insulating and bonding. Excellent adhesion to brick, block, stone, plaster and cementitious materials as well as wood, metal and a variety of plastics. Achievable sound insulation index of 60 dB in the joint.

#### Product Benefits

- 10 year i3 performance guarantee\*
- Good elasticity with MAF > 35%
- Good dimensional stability
- Rapid cutting capacity
- Excellent bonding to various substrates
- Low post expansion reduces need to cut back excess cured foam and minimises wastage

#### Colour

White

#### Packaging

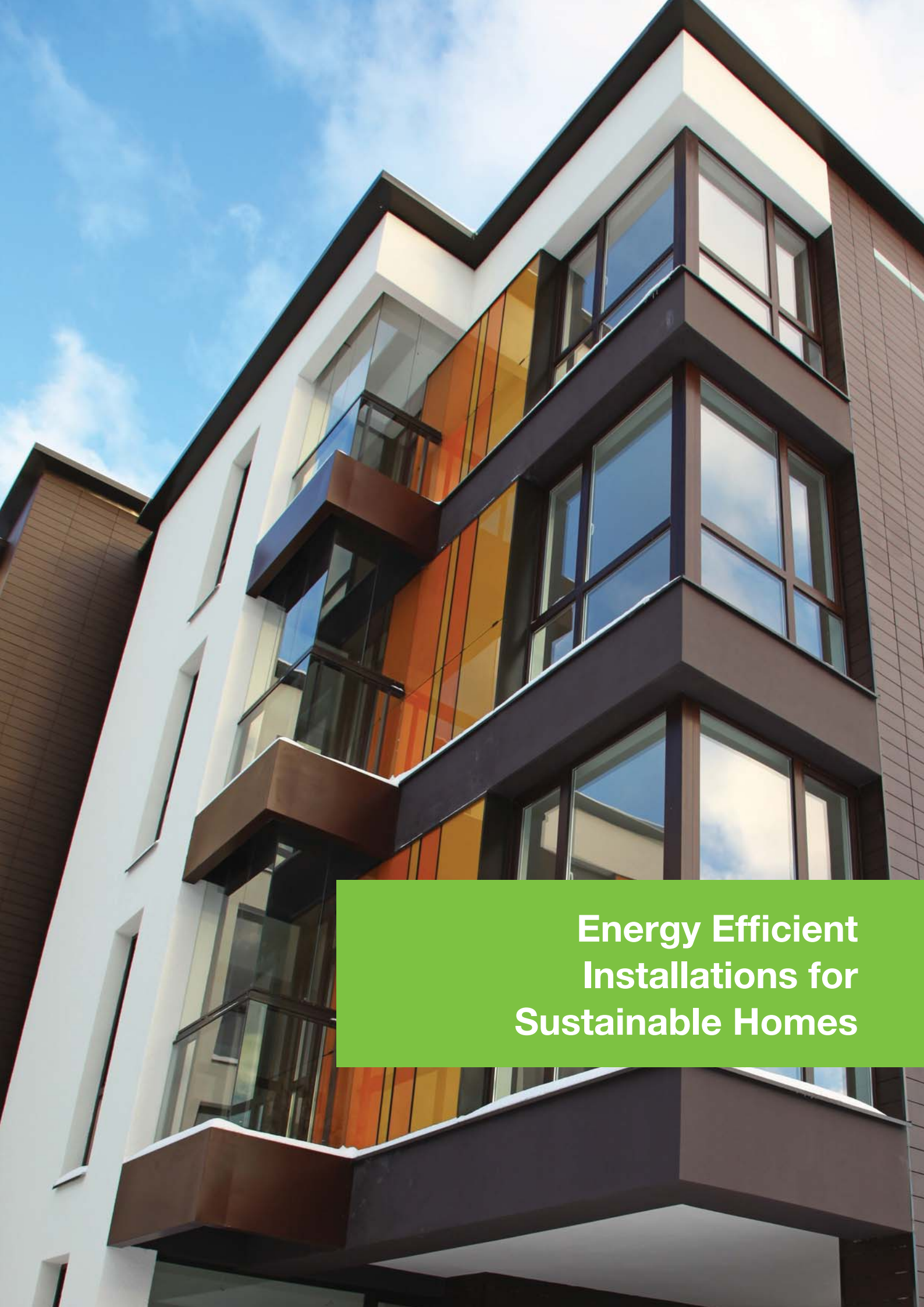
750 ml gun grade x 12 cans per box



Middle Insulation Seal







**Energy Efficient  
Installations for  
Sustainable Homes**

# High Performance Sealants

## SP525

### Low Modulus Hybrid Polymer Joint Sealant

Tremco SP525 is a one component, non-sagging, low modulus elastomeric sealant based on Tremco illbruck's SP hybrid polymer formulation.

#### Typical Uses

Tremco SP525 is recommended for construction sealing as well as for sealing of windows and door perimeter joints. It can be used for exterior and interior applications.

#### Products Benefits

- A green alternative to traditional polyurethane sealants
- Solvent-free and isocyanate-free
- Provides a permanently flexible joint with movement accommodation of 25%
- Excellent resistance to UV exposure, ageing and weathering

- Compatible with most common building substrates including metals
- Meets the requirements of ISO 11600 F - 25 - LM

#### Colour

White, Light Grey, Mid Grey, Concrete Grey, Anthracite, Black.

#### Size Availability

400 ml sausage (20 per box)  
600 ml sausage (20 per box)



Internal Air Seal

## FA870 & FA875

### Natural Stone Silicone Sealants

Tremco FA870 & FA875 are one component, non-sagging, silicone based sealants free of plasticiser with neutral cross-linkage for sealing of colour sensitive natural stones. Tremco FA875 cures to a matt surface. Contains fungicide.

#### Typical Uses

Tremco FA870 & FA875 have been formulated for the long term elastic sealing of connection and movement joints between natural stones such as granite, slate, terrazzo, porphyry, limestone, travertine, sandstone, quartzite, marble, etc. as well as for connection joints towards other conventional materials like concrete, ceramics, metals, glass, PVC and primed wood.

#### Product Benefits

- A high performance silicone sealant developed specifically for the sealing of natural stone materials without discolouration
- Tremco FA875 gives a matt finish once cured
- Easy application and excellent tooling properties
- Good resistance to UV light, ageing and weathering
- Contains fungicide to prevent mould growth - suitable for sanitary applications
- Rapid curing formulation - skins within 10 - 20 minutes
- Chemically neutral, not corrosive and very low odour
- Compatible with most construction materials



#### Colour

White, Light Grey, Dark Grey, Concrete Grey, Anthracite, Black, Portland (Light Sandstone), Dark Sandstone

#### Size Availability

400 ml sausage (25 per box)



## FS500

### Perimeter Joint Sealant

Tremco FS500 is a one-part neutral curing, low modulus, low odour silicone sealant suitable for perimeter joint sealing applications with high movement capability. It has excellent adhesion to most porous and non-porous substrates including: masonry, brick, aluminium, PVC-U, polycarbonate, polyacrylate, wood, glass and glazed surfaces.

#### Typical Uses

- Expansion & curtain wall joints
- Perimeter joints around windows or doors
- Panel joints between most common substrates
- Heel and toe beads
- Polycarbonate glazing
- Other general joint sealing applications

#### Product Benefits

- Exceptional weather resistance: Resists ultra violet, ozone and moisture exposure and has an anticipated life of 20 years
- Movement capability: up to 50%
- No priming: Good adhesion without primer to most common substrates
- Low modulus: Low modulus characteristics ensure minimum strain at joint faces
- Neutral cure - low odour: No risk of any corrosion of substrate by acid or amine generation
- Standards: Tremco FS500 meets the requirements of EN ISO 11600 G&F 25LM

#### Colour

Black, white, brown and grey. Other colours on request — subject to availability and minimum order quantity.

#### Size Availability

310 ml cartridge (20 per box)  
600 ml sausage (20 per box)



## FA600

### Neutral Curing, Low Modulus Silicone Sealant

Tremco FA600 cures rapidly to form a permanently flexible and extremely durable watertight seal for perimeter caulking applications.

#### Typical Uses

- Tremco 600 is designed for sealing:
- window and door perimeters
  - windows, display cases, etc.
  - conservatories and greenhouses
  - general purpose sealing in building façades
  - sanitary applications
  - cold rooms
  - hospital sluice rooms
  - polycarbonate
  - lead.

#### Product Benefits

- Excellent durability
- Wide Service Temperature Range: -40°C to +120°C
- Movement Accommodation: ±25%
- Good adhesion without primer to most common glazing and construction substrates
- Compatible with water based and solvent based coatings - no plasticiser migration and with lead
- Fast cure
- Easy to gun
- Excellent UV resistance
- Translucent Grade: ideal for numerous glazing applications
- Meets the requirements of ISO 11600-F&G-25LM

#### Colours

Translucent, white, brown, grey and black. Other colours - subject to availability / minimum order quantity.

#### Size Availability

310ml cartridges (20 per box)  
600ml sausages (20 per box) subject to minimum order quantities.



# Structural Glazing Sealants

## SG920

### Structural Glazing Tape

SG920 Structural Glazing Tape is a closed cell high density PVC foam tape with a micro-cellular structure.

#### Typical Uses

SG920 Structural Glazing Tape has been specially developed to be utilised as a compatible spacer for Structural Glazing Systems. Project details and adhesion/compatibility testing of all structural components should be reviewed by Tremco illbruck. Drawings and samples should be forwarded to Tremco illbruck for approval before commencing work.

#### Product Benefits

- Available in a variety of sizes
- Specially developed to be utilised as a compatible spacer for Structural Glazing Systems
- Plastic liner for ease of application

#### Colour

Black

#### Size Availability

Available in a wide variety of sizes with pressure sensitive adhesive on one or two sides. Supplied with a protective release liner covering the adhesive coated surface.



## SG200 Proglaze II

### 2-Part, High Modulus Silicone Sealant for SSG Bonding

Tremco SG200 Proglaze II is a high modulus, two-component, elastomeric, neutral curing silicone sealant specifically developed for in-plant Silicone Structural Bonding application.

#### Typical Uses

SG200 Proglaze II is ideally suited for both two and four sided structural glazing applications usually between single glass pane or IG unit and supporting frame such as anodized aluminium, stainless steel, coated aluminium, etc. It is designed specifically for in-plant glazing and curtain wall applications where fast cure time reduces production time.

#### Product Benefits

- Wide mixing tolerance ratio for easier manufacturing process

- Excellent adhesion to most common glazing substrates
- Outstanding resistance to UV exposure, ozone and extreme temperatures
- Fast cure independent of joint depth
- Non-corrosive and odourless cure
- ETA certified, CE marked, SNJF-VEC, ASTM C1184

#### Colour (Final Mix)

Standard Grade: Anthracite

Black Grade: Black

#### Size Availability

Pt A: 190 litre drum

Pt B Standard Grade: 17 litre pail

Pt B Black Grade: 18 litre pail



## SG300 Spectrem 2

### Versatile, High Performance Silicone Sealant

Tremco SG300 is a versatile, high performance silicone sealant which reacts with atmospheric moisture to produce a flexible silicone rubber, ideal for a wide variety of joint sealing and glazing applications. Tremco SG300 provides exceptional cure stability. Capable of taking extension, compression, transverse and longitudinal movements, Tremco SG300 resists severe environmental conditions such as wind loading, wind driven rain, snow and sleet, and is impervious to acid rain, ozone, ultraviolet light and extreme temperature variations. Because of its excellent adhesive qualities, Tremco SG300 provides the long-term performance required for demanding weatherproofing applications. Tremco SG300 is recommended for use on both new construction and renovation projects.

#### Typical Uses

The high modulus and outstanding physical properties of Tremco SG300 allow for sealing a wide variety of demanding applications, such as:

- Curtain Walling, included cap, toe, heel and air seals
- General sealing / jointing

- Silicone Structural Glazing in 2 sided systems
- A weather seal in butt (2 sided) and stopless (4 sided) glazing systems
- Joints within curtain / window systems

#### Product Benefits

- **Exceptional weather resistance:**  
Including UV and ozone exposure with an anticipated life of 30 years
- **Movement capability: 25%**
- **No priming:**  
Good adhesion without primer to most common substrates
- **High adhesion strength:**  
Suited for bonding applications
- **Excellent gunnability:**  
Through wide temperature range
- **Stable curing system:**  
Which assures product reliability
- **Quick skin formation**
- **Standards:**  
Tremco SG300 Spectrem 2 meets the requirements of EN ISO 11600 G&F 25HM



#### Colour

Black

#### Packaging

310 ml cartridge (12 per box)  
600 ml sausage (20 per box)





# Fire-Rated Sealants

## TP446 Compriband Super FR

### Fire Rated Acrylic Impregnated Foam Sealant Strip

Illbruck TP446 Compriband Super FR is an acrylic impregnated foam sealant strip which when used under compression by 80% provides a fire seal for up to 4 hours in accordance with BS 476 Part 20 or for longer periods when used in conjunction with Nullifire M701 acrylic sealant or Nullifire M703 silicone sealant. At 80% compression the product also provides a high performance weatherseal (>600 Pa). The product is supplied in roll form pre-compressed and ready for immediate use with a self-adhesive backing. After positioning, the material expands to find its own level and creates a permanent elastic seal. The product remains flexible throughout its life and responds to continual expansion and contraction cycles caused by thermal and structural movement.

#### Typical Uses

Illbruck TP446 Compriband Super FR is designed to be used for the linear sealing of movement joints in substantially brick, stone and cementaceous building elements for example in walls, partitions, around window and door frames, sectional buildings and insulated cladding panels.

#### Product Benefits

- Tested in accordance with BS476 part 20/22
- Clean and easy to apply
- FR (Fire Rated) Seal for movement joints
- Internal & external applications
- Seals rough and irregular joints
- Dry applied seal - no curing time

#### Colour

Mid / Pale Grey



#### Size Availability

| Size | Gap Size (mm) | Recommended Tape Width / Joint Depth (mm) | Expanded Thickness (mm) | Roll Length (m) |
|------|---------------|-------------------------------------------|-------------------------|-----------------|
| 2    | 2             | 40                                        | 10                      | 8               |
| 3    | 2-3           | 40                                        | 15                      | 6               |
| 4    | 3-4           | 40                                        | 20                      | 6               |
| 5    | 4-5           | 40                                        | 25                      | 4               |
| 6    | 5-6           | 40                                        | 30                      | 4               |
| 8    | 7-8           | 40                                        | 40                      | 4               |
| 10   | 9-10          | 40                                        | 50                      | 4               |
| 12   | 10-12         | 40                                        | 60                      | 4               |
| 16   | 14-16         | 40                                        | 80                      | 3               |
| 20   | 17-20         | 50                                        | 100                     | 3               |
| 25   | 22-25         | 60                                        | 125                     | 3               |

Technical data sheets available upon request and should be carefully observed.  
Fire resistance – refer to separate literature outlining various joint test results.

## FF197

### Gun Grade Fire-Rated PU Foam

Nullifire FF197 is a modified, single component, fire rated polyurethane foam.

#### Typical Uses

Nullifire FF197 is used to seal linear gaps throughout the fire rated areas of a building. Nullifire FF197 has excellent adhesion to most building materials such as wood, brick, stone, cement, plaster, polystyrene, cable sheaths, metals & many plastics.

#### Products Benefits

- Certified to the latest British and European standards BS EN 1366-4, DIN 4102 Pt 1 (B1) and EN 13501: Pt 2
- Cures to form a semi-rigid foam able to accommodate some movement of the joint
- Excellent adhesion to a wide range of construction materials
- Acts as an effective fire seal for up to 4 hours (BS EN 1366-4) when used with Nullifire M701 or Nullifire M703

#### Colour

Grey

#### Size Availability

880 ml pressurised canister (12 per box)



## M701

### Water-Bourne Intumescent Acrylic Sealant

Nullifire M701 is a one-part fire resistant joint sealant based on an emulsion acrylic.

#### Typical Uses

The sealant is suitable for internal use in a variety of fire rated structures. Typical applications include joints in compartment walls and floors, providing a perimeter seal around partitioning and service penetrations, and bedding of fire door locks and hinges.

#### Product Benefits

- Can achieve up to 5 hours joint fire resistance tested in accordance with BS EN 1366-4
- Ideal for low movement joints (up to 20%) - suitable for gaps up to 50 mm wide
- Provides a durable seal resistant to mould, fungus and vermin attack
- Safe to use: asbestos and halogen free
- Easily paintable

#### Colour

Grey

#### Size Availability

310 ml cartridges (12 per box)  
600 ml sausages (12 per box)  
830 ml cartridges (9 per box)



## M703

### Solvent Free, Fire Resistant Silicone Sealant

Nullifire M703 is a fire resistant seal for high movement joints (up to 50%). For internal and external use.

#### Typical Uses

The sealant is suitable for internal use in a variety of fire rated structures. Typical applications include joints in compartment walls and floors, providing a perimeter seal around partitioning and service penetrations, and bedding of fire door locks and hinges.

#### Product Benefits

- Can achieve up to 5 hours joint fire resistance tested in accordance with BS EN 1366-4
- Accommodates up to 50% movement
- Suitable for gaps up to 50 mm wide
- Excellent unprimed adhesion
- Slump free with a long service life
- Seal ratio at 2:1 (10 mm wide x 5 mm deep)
- Asbestos and halogen free
- No shrinkage

- Resistant to mould, fungus and vermin attack

#### Colour

White and grey

#### Size Availability

310 ml cartridges (12 per box)  
600 ml sausages (12 per box)



Tremco illbruck Limited  
3A Walton Road, Pattinson North  
Washington, Tyne & Wear NE38 8QA  
United Kingdom

Tel: +44 (0)191 419 0505  
Fax: +44 (0)191 419 2200  
email: [uk.sales@tremco-illbruck.com](mailto:uk.sales@tremco-illbruck.com)  
website: [www.tremco-illbruck.co.uk](http://www.tremco-illbruck.co.uk)

Registered in England No. 02802593  
Registered Office:  
Coupland Road, Hindley Green  
Wigan WN2 4HT

## Tremco illbruck

Tremco illbruck was created from the merger of Tremco's European Sealant and Weatherproofing Division with illbruck Sealant Systems in September 2005.

This powerful combination gives Tremco illbruck a leadership position in the sealants, glazing, waterproofing, flooring and passive fire protection markets throughout Europe. Strong premium brands such as Tremco, illbruck, Compriband and Nullifire stand for innovative, reliable products and unrivalled services.

