

■ GEBERIT

# EVERYTHING HOTEL



DESIGN  
MEETS  
FUNCTION

# OUR BUILT-IN COMMITMENT TO YOU

At Geberit, design and function come together beautifully to create a whole new way of reimagining bathroom space. Whether your hotel aesthetic focuses on design minimalism or maximum comfort, we can make your vision a reality.

Our passion for design and technology delivers contemporary, high quality solutions that enhance the guest experience. The Geberit Bathroom Collection provides inspirational solutions for hotel guests that meet every level of design aspiration.

As a European market leader in sanitary technology and innovation, we apply our vast Know-How and over 150 years of experience to everything we do. With our continuous focus on research and development,

we introduce pioneering and fully integrated products to market year after year, complemented by unrivalled availability, delivery, training and specification support.

From working on hotel projects around the world we understand that hotel bathrooms are increasingly being seen as a core driver of guest experience. By staying up to date with the latest trends and innovation affecting the industry, we are able to constantly update and develop our offering to ensure our products meet your every need, and ensure guest satisfaction.

## KNOW-HOW

We bring over 150 years of Know-How to every new bathroom, with every feature carefully crafted and designed to optimise buyer appeal.

## INNOVATION

With unrivalled behind the wall technology and inspirational new ceramics, we offer the complete bathroom solution - the perfect balance of elegant design and outstanding function.

## PARTNERSHIP

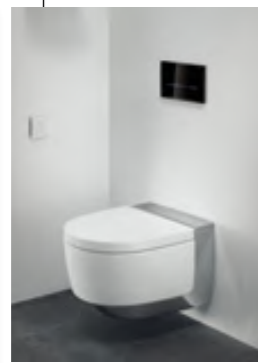
We work closely with you to add value to every development, with industry-leading logistical support, training, product availability and delivery.

## RELIABILITY

Our total focus on performance means our products combine safety and durability with ease of installation.

## QUALITY OF LIFE

From Rimfree® technology and stylish flush plates to exceptional water economy, we make life easier, more comfortable and more liveable.



GRAN HOTEL MIRAMAR, MALAGA, SPAIN



BURGENSTOCK RESORT, OBBURGEN, SWITZERLAND



CASA CAMINADA, FURSTENAU, SWITZERLAND

# CONTENTS

REFERENCE PROJECTS	4
HOTEL SOLUTIONS	10
HOTEL GUESTROOM	12
PUBLIC WASHROOMS	14
GEBERIT ONE	16
GEBERIT CITTERIO	18
GEBERIT XENO <sup>2</sup>	20
GEBERIT MYDAY	22
GEBERIT ACANTO	24
GEBERIT ICON	26
GEBERIT SMYLE SQUARE	30
GEBERIT RENOVA PLAN	32
GEBERIT SELNOVA	34
GEBERIT SELNOVA SQUARE	36
GEBERIT SELNOVA COMPACT	38
GEBERIT SELNOVA COMFORT	40
GEBERIT SELNOVA SQUARE S	42
GEBERIT SMYLE	44
GEBERIT VARIFORM	46
GEBERIT SHOWER TOILETS	48
GEBERIT WALL HUNG	56
BEHIND THE WALL TECHNOLOGY	58
FLUSH PLATES	60
GEBERIT GEO SHOWERING	62
GEBERIT SHOWER DRAINAGE	64
GEBERIT SETAPLANO	66
GEBERIT OPTION MIRRORS	68
GEBERIT MONOLITH	70
FUNCTIONS AND SOLUTIONS	72
ACOUSTIC SOLUTIONS	76
GEBERIT SILENT-DB20	78
GEBERIT SUPERTUBE	80
SUSTAINABILITY	82
SERVICES AND SUPPORT	84
SHOWROOM TRAINING	86



## GRAN HOTEL MIRAMAR, MALAGA, SPAIN

The palatial five-star hotel has been returned to its old splendour. Whilst the hotel lobby is now located in the covered inner courtyard, modern technology and innovative design ensure maximum comfort in the 190 suites.

In 2016, the Miramar was purchased by Santos Hotels, who wasted no time in changing the building back into a luxury hotel. Classic elegance and high-quality workmanship also played a key role when it came to refurbishing the bathrooms. As they offer convincing design, comfort and energy efficiency, thus it is no surprise that Geberit products are found throughout.



### PRODUCTS

- Geberit Duofix Installation System
- Geberit concealed cisterns Omega, Sigma 8cm & Sigma 12cm
- Geberit actuator plates Omega30 & Sigma50
- Geberit urinal system Preda urinal
- Geberit electronic washbasin taps

**CASA CAMINADA, FURSTENAU, SWITZERLAND**



The goal for architect Gion A. Caminada was to replace two unused barns with a new building that is carefully integrated into the organic surroundings of the complex as a whole while enabling a forward-looking use of the spaces. Caminada was able to accomplish this balancing act between the past and future. Original elements such as the weather roof beams or the floors under the rood on which hay used to be dried are not some kitsch, romanticised reference, but instead functional parts of the new building.

This integration of the old and new can be seen in the washrooms throughout the guest house. Thanks to handmade tiles, each of the bathrooms has its own individual colour. Meanwhile, the Geberit products installed here are the same throughout - selected by the architect due to integrated technology across the range that will stand the test of time.



**PRODUCTS**

- Geberit AquaClean Mera shower toilet
- Acanto and Xeno<sup>2</sup> bathroom series
- Sigma20 actuator plate
- Duofix installation system
- Preda Urinal
- Mepla and Mapress supply systems
- Silent-db20 drainage system
- Setaplano Shower Surface



## BURGENSTOCK RESORT, OBBURGEN, SWITZERLAND

With Burgenstock Resort high above Lake Lucerne, a piece of tourism history is now shining in new splendour. While guests from all over the world can choose from a range of activities that are as broad as they are diverse, the Geberit AquaClean Sela shower toilet is a permanent fixture in all suites.

Opened in stages from July 2017, the Burgenstock Resort has something for everyone - whether congress participants, those looking to relax or those looking to engage in more active pursuits. One common denominator is the Geberit AquaClean shower toilet, which can be found in the three main buildings - the Palace, the Burgenstock Hotel and the Medical Wellness Waldhotel. With a number of high quality features, technical characteristics, functionality and maintenance, plus overall modern design - the Geberit AquaClean Sela offered the full package.



# HOTEL SOLUTIONS

## INTELLIGENT PRODUCTS TO MEET YOUR BUSINESS NEEDS

All over the world hoteliers trust in Geberit's sanitary technology. They rely on experience, innovation and know-how. Geberit ensures that everything works smoothly in front of and behind the wall and that your investment is worthwhile for decades.

### GEBERIT VARIFORM WASHBASIN

Available in a wide range of geometries, Geberit Variform washbasins provide maximum design freedom for your hotel project.



#### CLEANLINESS

Products that are resistant to soiling and easy to clean. Ideal for minimising hotel personnel expenses and operating costs.



#### SPACE

Space-saving products for intelligent solutions to challenging washroom floor plans and small rooms.



#### COMFORT

Products and functions that bring guest comfort and hygiene to the washroom - for extra freshness, well-being and cleanliness.



#### DESIGN

A sleek and timeless aesthetic that works well together for your hotel.



#### ACCESSIBILITY

An easily accessible bathroom designed to make life easier for guests and hotel staff with a range of different needs.



#### NOISE REDUCTION

Products designed to reduce sound emission caused by flushing the toilet. This ensures guests are not disturbed by their neighbours.



#### FIRE PROTECTION

Prevents the rapid spread of fires caused by unsecured feed-throughs so that guests can be kept safe.



#### DRINKING WATER HYGIENE

The right measures can be taken to ensure that showering remains safe, hygienic and enjoyable experience.



#### WATER-SAVING

Products that reduce water consumption without compromising on design.

# GEBERIT HOTEL GUESTROOM

ENHANCING THE GUESTROOM EXPERIENCE

The new Select Collection and Aspire Collection by Geberit brings together elegant design and outstanding function in spectacular fashion, with new ceramics, innovation and a whole new level of support. We've combined Swiss design with smart technologies to create five inspirational ranges offering unrivalled comfort, cleanliness and usability. The result is aesthetically stunning and technically outstanding, with luxurious ceramics, furniture and fittings supported by ingenious behind-the-wall Know-How, presenting developers with the complete bathroom solution. From easy-clean Rimfree® technology to ultra-hygienic shower toilets, nobody transforms bathrooms into harmonious, high quality, modern living spaces quite like Geberit.



## GEBERIT FLUSH PLATE

Combining intelligent functions with convenience to ensure a sense of freshness and cleanliness in your hotel washroom project. Geberit's range of flush plate solutions are available in touchfree options, ideal for heavy footfall washrooms. Whilst built-in odour extraction and an insert for in-cistern sticks provide enhanced guest wellbeing and comfort.

## GEBERIT MIRRORS

Enhance guest facilities with intelligently designed mirrors from Geberit. With integrated features such as illumination, USB ports and magnifying mirrors - Geberit offers a broad variety of mirrors to meet your hotel project requirements.

## GEBERIT FLOOR-EVEN SHOWER DRAINAGE

Floor-even showers allow guests easy step access into the shower area without a threshold. Geberit floor-even shower drainage solutions are characterised by an attractive design, easy cleaning and hydraulically optimised outlet technology.

## GEBERIT AQUACLEAN SHOWER TOILET

Create a new level of guest comfort with a Geberit AquaClean Shower Toilet. From an elegant complete WC to a flexible WC enhancement solution, Geberit AquaClean provide a feeling of freshness and cleanliness for guests as well as delivering a unique sense of wellbeing.

## GEBERIT WASHBASIN

Available in a wide range of geometries and styles to fit your hotel washroom project. The ceramic surfaces are uniformly smooth and easy to clean. Available in no tap hole options to reduce the build up of dirt and germs.

# GEBERIT PUBLIC WASHROOMS

ENSURING A SEAMLESS ENVIRONMENT THROUGHOUT



## HIGHLY RELIABLE

Electronic washbasin taps are primarily used in sanitary facilities in public and semi-public buildings such as airports, shopping centres, schools or restaurants. These taps have to be reliable in highly frequented places in particular and must be able to withstand a lot, including rough use. Selecting the right solution is therefore particularly important for reliable function.



## NO-TOUCH FLUSH

Electronic hygiene. Recent surveys have revealed that fewer and fewer bathroom users are happy to actuate the flushing process manually – instead, they are increasingly looking for sanitary technology that features touchless operation. By offering electronic toilet flush actuators using infra-red sensors, Geberit has a solution to meet this growing demand. And while it requires your toilet to have an electrical connection, this is a feature that is fast becoming the norm.



## GEBERIT ANTI-VANDAL

Heavy footfall public washrooms imply a greater risk for damage. With Geberit's range of Anti-vandal flush plates can be locked into place with screws without affecting the overall design aesthetic. Available in a wide range of finishes and with an easy to clean coating for ongoing cleaning maintenance.



## GEBERIT URINAL SYSTEMS

With a broad choice of design options available, both rimless and with rim – Geberit Urinal Systems offer a flexible solution to fit with your next semi-public hotel washroom project. Coupled with an infrared flush option and hidden automatic flush actuation – Geberit Urinal Systems are easy to maintain and hygienic.



## GEBERIT INFRARED FLUSH PLATE

Combining intelligent functions with convenience to ensure a sense of freshness and cleanliness in your hotel washroom project. Geberit's range of infrared flush plate solutions are available in touchfree options, ideal for heavy footfall washrooms. Whilst built-in odour extraction and an insert for in-cistern sticks provide enhanced guest wellbeing and comfort.

## GEBERIT INFRARED TAPS

Elegant and touchfree wall-mounted or deck-mounted taps made of chrome-plated brass are the ideal solution for enhance cleanliness in your hotel washroom project. Available in a choice of options to suit practically any washbasin design.

## GEBERIT RIMFREE AND RIMLESS WC PANS

The rimless WCs from Geberit are designed without any rim at all, meaning no difficult to access places and easier cleaning when compared to traditional pans. The specially designed bowl creates hygienic flushing and surface rinsing with minimal water consumption.

## GEBERIT KERATECT WASHBASINS

Fired on as a special glaze, Geberit Keratect is almost entirely non-porous and extremely smooth. This dirt-repellent, hygienic surface means that ceramic appliances are easier to maintain as well as durable and scratchproof.



# GEBERIT ONE

Geberit ONE is a pioneering, fully integrated and comprehensive solution for the entire washroom. Made possible by integrating components behind the wall. Cleverly combined into a single system, Geberit ONE has many benefits – both obvious and hidden. This means greater cleanliness, more space and greater flexibility for the ideal hotel washroom environment.



## GEBERIT ONE BATHROOM FURNITURE COLOURS

### BODY / FRONT



White, high-gloss coated



Walnut real wood veneer

KeraTect®

Rimfree®

→ Visit [www.geberit.co.uk/one](http://www.geberit.co.uk/one)








# GEBERIT CITTERIO

Flowing shapes and beautifully simple contouring create a look of pure originality.

The Geberit Citterio bathroom series reflects the unique design hallmarks of the renowned Italian architect and designer Antonio Citterio. Italian design with simple, timeless elegance.



## GEBERIT CITTERIO BATHROOM FURNITURE COLOURS

FRONT/PLATE	BODY	FRONT/PLATE	BODY	HANDLE/FEET
				
Taupe glass	Oak beige wooden structured melamine	Black glass	Oak grey-brown wooden structured melamine	Champagne

KeraTect®

Rimfree®

→ Visit [www.geberit.co.uk/citterio](http://www.geberit.co.uk/citterio)



# GEBERIT XENO<sup>2</sup>

The Geberit Xeno<sup>2</sup> bathroom series is synonymous with design minimalism. Clear geometric outer lines are complemented by soft, natural shapes in the inner basin. This combination creates the impression of an inner basin that has been shaped over decades by flowing water.



## GEBERIT XENO<sup>2</sup> BATHROOM FURNITURE COLOURS

### BODY / FRONT



White  
high-gloss



Scultura grey



Matt grey

KeraTect®

Rimfree®

→ Visit [www.geberit.co.uk/xeno2](http://www.geberit.co.uk/xeno2)



# GEBERIT MYDAY

The designer range Geberit myDay impresses thanks to its soft, organic and yet very emotional shapes. This results in a natural feel-good aesthetic that provides a welcome break from the hustle and bustle of everyday life.



## GEBERIT MYDAY BATHROOM FURNITURE COLOURS

### BODY / FRONT



White, high-gloss



Taupe, high-gloss

KeraTect®

Rimfree

→ Visit [www.geberit.co.uk/myday](http://www.geberit.co.uk/myday)



# GEBERIT ACANTO

The Geberit Acanto range takes everything the modern bathroom has to offer and combines it with timeless beauty and flexibility. With new design possibilities offering individual comfort functions that respond to your needs, it provides fully customisable options to help you to create the kind of bathroom that suits your life completely.



## GEBERIT ACANTO BATHROOM FURNITURE COLOURS

### BODY



White high-gloss coated

Sand grey matt coated

Lava matt coated

Black matt coated

### FRONT



White glass

Sand grey glass

Lava glass

Black glass

KeraTect®

Rimfree®

→ Visit [www.geberit.co.uk/acanto](http://www.geberit.co.uk/acanto)



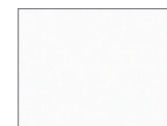
# GEBERIT ICON

An extensive range of ceramic products and bathroom furniture in a clear and modern design language providing maximum design flexibility. The Geberit iCon series shines with its linear design and impressive versatility.

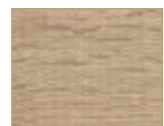


## GEBERIT ICON BATHROOM FURNITURE COLOURS

### BODY / FRONT



White  
high-gloss



Oak



Lava

Rimfree

→ Visit [www.geberit.co.uk/icon](http://www.geberit.co.uk/icon)



# GEBERIT ICON

## COMPACT SOLUTIONS FOR SMALLER WASHROOMS

The Geberit iCon range offers a stylish compact solution featuring reduced projection ceramics and furniture, helping to maximise space. The modular furniture concept allows for generous storage in even the smallest of hotel washrooms.



### GEBERIT ICON BATHROOM FURNITURE COLOURS

#### BODY / FRONT



White  
high-gloss



Oak



Lava

Rimfree

→ Visit [www.geberit.co.uk/icon](http://www.geberit.co.uk/icon)



# GEBERIT SMYLE SQUARE

With its contemporary design and ornate lines, the Geberit Smyle bathroom series creates a relaxing and positive bathroom ambience and brings harmony and lightness into guestrooms. With a clear sense of order and efficient use of a room, Smyle achieves the highest level of convenience in the bathroom for any structural situation.



## GEBERIT SMYLE BATHROOM FURNITURE COLOURS

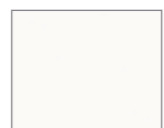
### BODY / FRONT



sand grey,  
high-gloss



lava, matt



white, high-gloss



hickory,  
wood-textured

Rimfree

→ Visit [www.geberit.co.uk/smyle](http://www.geberit.co.uk/smyle)





# GEBERIT RENOVA PLAN

A variety of basins and furniture, with clear, angular design and an attractive bathroom furniture range, Geberit Renova plan offer varying design options for your hotel washroom project. The slim washbasins with a narrow circumferential rim are available in many different sizes and are in line with the latest bathroom trends. With a wide choice of furniture to store toiletries and towels, removing clutter and creating a tidy, undisrupted washroom space.



## GEBERIT RENOVA PLAN BATHROOM FURNITURE COLOURS

### BODY / FRONT



White, high-gloss coated

Lava, matt coated

Light elm, foil-covered

Oak, foil-covered

→ Visit [www.geberit.co.uk/renovaplan](http://www.geberit.co.uk/renovaplan)





# GEBERIT SELNOVA

With its classic lines, the Geberit Selnova bathroom series can be incorporated into any bathroom. Geberit has selected a simple and discreet design and brought the functionality to the fore. Geberit Selnova sets itself apart with its outstanding value for money, and the uncompromisingly high quality that has become synonymous with the Geberit brand. Classically timeless, for every hotel washroom.



Rimfree

→ Visit [www.geberit.co.uk/selnova](http://www.geberit.co.uk/selnova)

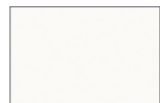
# GEBERIT SELNOVA SQUARE

Geberit Selnova Square's modern, yet classic designs, blend harmoniously into any bathroom. This is in addition to many clever solutions for special requirements, making it very easy to turn an old bathroom into a modern space. Corners and edges, new highlights.



GEBERIT SELNOVA SQUARE BATHROOM FURNITURE COLOURS

BODY / FRONT



White, high-gloss coated



Lava, matt coated

Rimfree

→ Visit [www.geberit.co.uk/selnovasquare](http://www.geberit.co.uk/selnovasquare)



# GEBERIT SELNOVA COMPACT

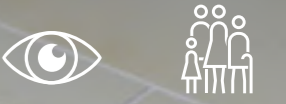
Small can be beautiful. The special Geberit Selnova Compact range offers ideal solutions for stylishly fitted out guest bathrooms and lobby washrooms. As well as short projection toilets and bidets, handrinse basins have a small depth, corner constructions and offer reduced product dimensions. Save those crucial few centimetres that make such a difference in a small room.



THE SELECT COLLECTION

# GEBERIT SELNOVA COMFORT

The Geberit Selnova Comfort solutions enable older people and those with reduced mobility to retain their independence in the bathroom, without compromising on the quality of fittings. The products implement important functionalities in an appealing design.



→ Visit [www.geberit.co.uk/selnovacomfort](http://www.geberit.co.uk/selnovacomfort)

THE SELECT COLLECTION

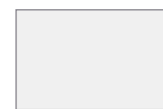
# GEBERIT SELNOVA SQUARE S

Clean lines and gentle chamfering are the key features of this bathroom furniture. The clever design enhances the slimline, lightweight appearance of the bathroom as well as providing a functional solution for your guest toiletries and towels.



## GEBERIT SELNOVA SQUARE S BATHROOM FURNITURE COLOURS

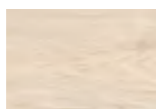
### BODY / FRONT



White, high coated gloss



Lava, matt coated



Light Hickory, wood-textured melamine



Hickory, wood-textured melamine



Chrome

### FEET / SKIRTING BOARDS

→ Visit [www.geberit.co.uk/selnovasquareslimline](http://www.geberit.co.uk/selnovasquareslimline)





# GEBERIT SMYLE

Geberit Smyle brings harmony into the guest bathroom and lobby washroom, along with a relaxing and positive ambience. A clear sense of order and efficient use of space makes Smyle the convenient choice for any bathroom design.



Rimfree

→ Visit [www.geberit.co.uk/smyle](http://www.geberit.co.uk/smyle)

# GEBERIT VARIFORM

The Geberit VariForm design concept is based on the four basic geometric shapes – circle, rectangle, oval and ellipse, using them to create new and different variations every time. It's a concept that opens up a whole host of possibilities for customising bathroom designs. The washbasins in the range are a particular highlight, offering an almost endless range of design options.



→ Visit [www.geberit.co.uk/variform](http://www.geberit.co.uk/variform)





# MEETING THE DEMANDS OF TODAY'S HOTEL GUESTS

WHY DO YOU NEED A  
SHOWER TOILET IN YOUR  
NEXT HOTEL PROJECT?

## GUEST WELLBEING

Water is essential for hygiene and our own wellbeing. In the far east, cleaning yourself with water after using the toilet has been par for the course for a long time. Therefore, it is unsurprising that in recent years through the rising trend for wellbeing and selfcare - there has been a major push from hotel guests for shower toilets in guestrooms.

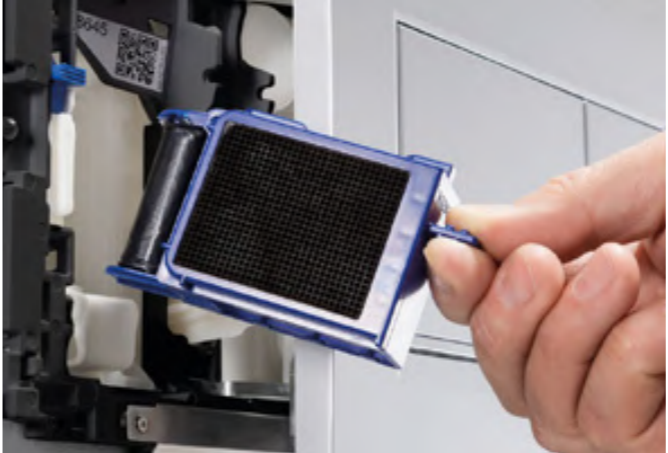
## GLOBAL INFLUENCES

The growing number of customers visiting the UK from Asian countries, where washing with water is the norm, has driven expectations of hotel guests to ensure facilities are up to scratch.

# REASONS TO CHOOSE GEBERIT AQUACLEAN SHOWER TOILETS

**SIMPLE MAINTENANCE**

Each Geberit AquaClean Shower Toilet is an easily accessible functional unit. This ensures minimal downtime in the event of a defect as well as simple ongoing maintenance. In addition, there is an excellent availability of spare parts if required to maintain the upkeep of each unit. The Geberit AquaClean shower toilet also features an automatic descaling programme for ongoing maintenance.



**↑ ELIMINATING ODOURS**

Eliminate any unpleasant odours directly within the ceramic. Geberit AquaClean Mera Shower Toilets come complete with odour extraction integrated into the unit. This low-noise odour extraction is done through a durable and easy to maintain ceramic honeycomb filter. The two minute run-on renders subsequent ventilation completely redundant and mitigates the needs for harsh chemical air fresheners.



**↑ EASY TO OPERATE**

Geberit AquaClean Shower Toilet has been designed with the user in mind. With ergonomic operation integrated into the units themselves, as well as a wide range of options such as a wall-mounted control panel, AquaClean App and also remote control. All the units are easy to use and set up.



**← EASY TO CLEAN**

A rimless ceramic, coupled with thorough flushing out (TurboFlush Technology) allows for easier cleaning of the inner bowl. In addition, Geberit AquaClean shower toilets feature automatic flushing of the spray arm and nozzle before and after each use to diminish build up of germs and dirt. The quick release function of the WC lids allows for hassle-free cleaning process, creating a simple and time-saving process for hotel personnel.

**SERVICE**

Geberit offers a whole host of ongoing support functions to ensure that your Geberit AquaClean operates efficiently and effectively. From technical advice and support as well as a comprehensive range of information materials for your maintenance and housekeeping teams – Geberit ensures a reliable service to support the function of each and every unit. We provide training courses available to support your teams as well as working closely with you to build tailored service packages.

**SUSTAINABLE LIFECYCLE**

Geberit AquaClean WC complete solutions score highly with regard to life cycle assessments and are comparable to conventional toilets when taking into consideration the consumption of toilet paper.

**MARKETING SUPPORT**

From inclusion in our Geberit AquaClean hotel locator to PR and media support to test at hotel initiatives - with Geberit AquaClean we will promote your hotel through a variety of channels and schemes.



NEW



# GEBERIT AQUACLEAN SELA

ENHANCING THE GUEST EXPERIENCE AT A TOUCH OF A BUTTON



#### ↑ WHIRLSPRAY SHOWER TECHNOLOGY

Like all Geberit shower toilets, AquaClean Sela features the unique, patented WhirlSpray shower technology. The shower spray is refined through dynamic aeration that allows for pleasant and thorough cleaning with low water consumption. So you feel fresh and clean all day.



#### ↑ RIMLESS CERAMIC PAN WITH TURBOFLUSH

Flushing is also extremely quiet and thorough. The innovative TurboFlush technology is based on a flow-optimized rimless ceramic pan. This way, the shower toilet can be flushed at any time without any disturbing sounds - even at night. And since the TurboFlush technology flushes the ceramic pan more thoroughly than a normal flush, you will almost never have to use the toilet brush after going to the toilet.



WhirlSpray shower technology with five adjustable shower pressure settings



Rimless ceramic pan with TurboFlush technology



Intuitive and clearly laid-out remote control



Orientation light in a range of seven colours



Individually adjustable spray arm position



Adjustable water spray temperature



Oscillating spray



Gently cleaning lady wash



SoftClosing



QuickRelease function for the toilet lid and seat



User detection



Descaling function



Energy-saving function



Geberit App



red dot design award winner 2012

DESIGN PLUS powered by ISH



Geberit AquaClean Sela in chrome

→ View the full range at [geberit.co.uk/aquaclean](http://geberit.co.uk/aquaclean)



# GEBERIT AQUACLEAN MERA EXCEPTIONALLY BRILLIANT

FLUSH PLATE  
Geberit Sigma70.



KeraTect®

reddot design award  
winner 2015

DESIGN PLUS  
powered by: ISH



## EQUIPMENT OF AQUACLEAN MERA COMFORT AND CLASSIC



WhirlSpray shower technology with five adjustable shower pressure settings



Rimless ceramic pan with TurboFlush technology



Intuitive and clearly laid-out remote control



Individually adjustable spray arm position



Adjustable water spray temperature



Oscillating spray



Gentle lady wash



Dryer



Odour extraction



QuickRelease function for the WC lid and seat



User detection



Descaling function



Energy-saving function



Geberit App

## ADDITIONAL COMFORT FUNCTIONS OF AQUACLEAN MERA COMFORT



Orientation light in a range of seven colours



Toilet seat heating



Touchless automatic mechanism for the toilet lid

AquaClean Mera combines the timeless elegance of its floating design with the highest quality materials. This top of the line model is defined by high quality, soft lines and slowing transitions. At the same time the luxurious shower toilet pampers you with perfect comfort thanks to the unique WhirlSpray technology and many other innovative features.



### ↑ PLEASANT SHOWER EXPERIENCE

The WhirlSpray shower with enhanced dynamic aeration technology ensures a targeted and thorough clean.



### ↑ A POWERFUL RINSE CLEAN

The innovative TurboFlush technology, based on the asymmetrical inner geometry of the rimless ceramic pan, ensures the WC is flushed out thoroughly and quietly.

→ View the full range at [geberit.co.uk/aquaclean](http://geberit.co.uk/aquaclean)

FIVE GOOD REASONS TO CHOOSE

# WALL-HUNG WC SOLUTIONS



## VERY STRONG

No wobbling or vibrations – strength-tested to bear a weight of up to 63 stone.



## DURABLE

Installed 60 million times over the past 50 years, Geberit concealed flushing systems represent the ultimate tried-and-tested solution.



## HYGIENE: SIMPLE CLEANING

No pedestal and no cistern in front of the wall means no exposed pipework for dirt and bacteria to hide.



## SIMPLE MAINTENANCE

Simply remove the actuator plate for access to all important parts. Geberit stock spare parts for you, for 25 years.



## TESTED IMPERMEABILITY

Every Geberit cistern is individually tested to guarantee water tightness.



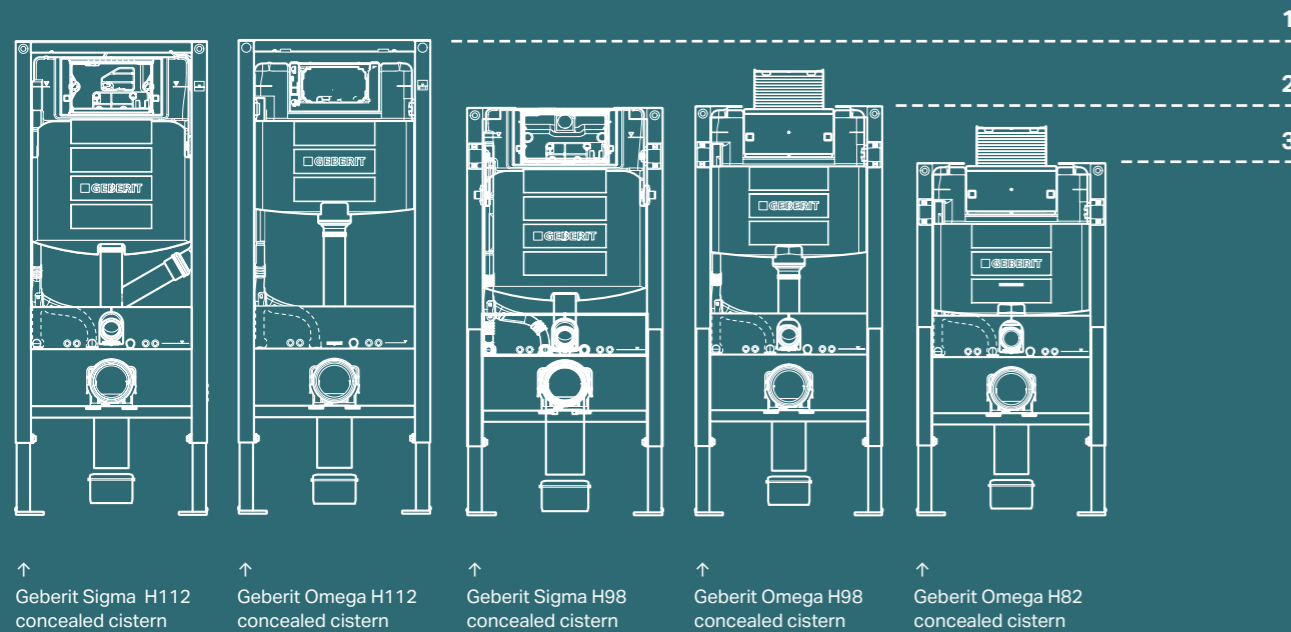
Wall-hung WCs give bathrooms a neat and tidy appearance and make cleaning the floor easier. They have been a standard feature in modern bathrooms for decades and have proven their worth in millions of installations.



# POWERFUL TECHNOLOGY BEHIND THE WALL

Geberit Duofix provides a comprehensive range with universal and self-supporting installation elements. These are available in drywall construction for all sanitary appliances. The installation elements suitable for partition wall installations, in-wall installations in stud-walls in lightweight construction, and part-height and room-height prewall installations. This flexible solution can be used in new hotel buildings and renovations.

## GEBERIT CONCEALED FLUSH TECHNOLOGY



1 Construction height 112cm 2 Construction height 98cm 3 Construction height 82cm

→ View the full range at [geberit.co.uk/duofix](http://geberit.co.uk/duofix)



Acoustically optimised



Number one in the field of sanitary technology in Europe



Over 50 years experience with concealed cisterns



Installed more than 60 million times



At least 25 years guaranteed spare parts availability



Water saving



Load-bearing capacity of 400kg



Wide range of designs, functions and installation options



Odour extraction compatibility



Prepared for electrical connection



Height-adjustable at installation



# GEBERIT FLUSH PLATES

Geberit flush plates provide the definitive finishing touch for on-trend bathrooms, combining visual elegance with innovative manual, electronic or pneumatic actuation. Made to last in durable, easy to clean materials, they combine aesthetics with advanced functionality, such as a hidden odour extraction unit and touchless technology. Rectangular, round, touchless or totally bespoke, we have the designs, colours and finishes to shape a new vision for the bathrooms on your next project.



↑ Sigma70



↑ Sigma10



↑ Sigma21



↑ Sigma50

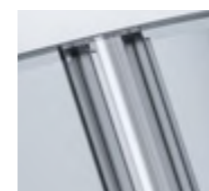
→ View the full range at [geberit.co.uk/flushplates](https://www.geberit.co.uk/flushplates)





# GEBERIT GEO SHOWERING

The Geberit GEO shower enclosure series provides a core range of framed shower enclosure products which deliver clear space saving solutions along with outstanding quality and design. With key features such as easy to clean ProClean Glass coating and profile handles, the Geo series is the perfect solution for your hotel washroom project.



#### PROFILE HANDLE DESIGN

Minimalistic profile handle design on all sliding partitions, providing easy cleaning and increased stability.



#### PROCLEAN GLASS COATING

ProClean glass coating creates surface tension, making the glass easier to clean and also reducing the build up of water marks, limescale and soap scum.



#### REVERSIBILITY

Doors and panels can be reversed for both left hand and right hand applications.



#### SPRING LOADED BUFFERS

Providing an enhanced cushioning effect for improved acoustics when opening and closing the shower door as well as smoother action when using the shower enclosure.



#### ROLLER SYSTEM

Enhanced traction across the upper and lower profiles of the shower enclosure, delivering improved acoustic benefits and a smoother door glide.



#### GLASS THICKNESS

6mm glass thickness as standard across all enclosures with 8mm upgrade available on sliding doors.

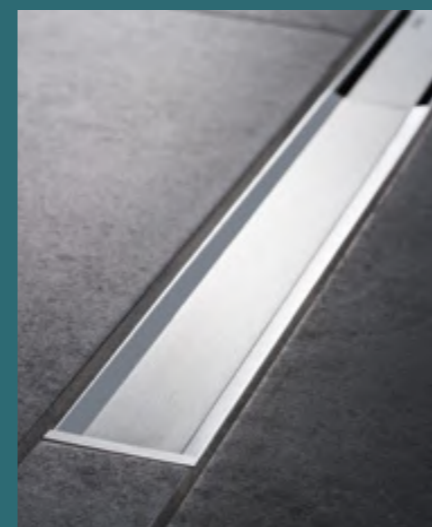
→ For more information visit [geberit.co.uk/geo](http://geberit.co.uk/geo)





# GEBERIT SHOWER DRAINAGE

## CLEAN LINE



### HYGIENIC, CLEAN AND SIMPLY BEAUTIFUL

Geberit CleanLine breaks new ground in shower drainage. It does not discharge the water invisibly in a channel but instead via elegant stainless steel collector profiles. There are no hidden areas meaning that dirt is prevented from accumulating and leading to unpleasant odours. Simply wipe over the profile once and everything is clean.

Geberit CleanLine is considerably more flexible than many other shower drainage solutions as the collector profile can be simply cut at both ends and adjusted to the nearest millimetre depending on the room conditions.

## WALL DRAINS



### TAKING THE FLOOR-EVEN SHOWER A STEP FURTHER

The Geberit wall drain shifts the drainage of floor-even showers from the floor to behind the wall. Not only does this look very attractive, it also makes it easier to install a floor-even shower. Both the drinking water and waste water installations are behind the wall and the floor can be tiled throughout. This also makes it possible to install underfloor heating without interruption.

All that remains visible is a small cover on the wall that can be easily removed to clean the comb insert behind. The cover is available in various surface finishes and can also be tiled to match the design of the wall.

## FLOOR DRAINS



### COMPACT AND EFFECTIVE

The dimensions of the Geberit shower floor drain are only 80 x 80 mm and it is therefore more compact than many conventional floor drains. However, this does not affect its attractive appearance or its discharge rate.



red dot design award  
winner 2015



# GEBERIT SHOWER SURFACE SETAPLANO



The Geberit Setaplano is made of a high quality solid surface material. You can really feel the difference as the smooth matt surface is particularly pleasant to the touch and radiates a sense of luxury. The surface material is noticeably solid and its non-slip properties provides more safety. The gentle incline with the soft and seamless transition to the outlet at the front end contributes to the harmonious overall appearance.

The Geberit Setaplano surface is very robust, easy to clean and hygienic. The material is also very forgiving – small defects and scratches can be easily buffed out. The edgeless inlet area in which no dirt can accumulate is also easy to clean, as is the comb insert that can be removed and cleaned effortlessly.

The substructure of the shower surface makes use of innovative system technology that makes your plumber's job easier and provides you with peace of mind that installation will be quick and cost-efficient. The system is already sealed perfectly in the factory and will remain so over the long term in your bathroom.



**1** The cover of the shower drain at the front end can be removed effortlessly. **2** A comb insert below the cover prevents from clogging. It can be easily removed and cleaned in next to no time.



# GEBERIT OPTION MIRRORS

Illuminated mirrors and mirror cabinets are a real focal point that can enhance any hotel washroom. The Option Mirror series offers a comprehensive selection of solutions to fit your project, available in a variety of sizes – all with soft backlighting and integrated shaving power points.



→ View the full range at [geberit.co.uk/optionmirrors](https://geberit.co.uk/optionmirrors)



# GEBERIT MONOLITH

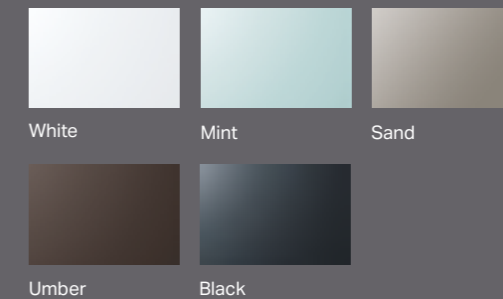
FUNCTIONAL BEAUTY

## MORE FLEXIBILITY IN THE WASHROOM

Do you want to create a fresh and outstanding highlight in your hotel washroom, but don't want to disturb the beauty of an existing wall?

With Geberit Monolith, you do not have to compromise. After all, truly impressive design comprises not only the aesthetic design, but also the function, the product material and the innovative technology behind it.

### COLOURS GEBERIT MONOLITH



→ Find out more at [geberit.co.uk/monolith](http://geberit.co.uk/monolith)



red dot design award  
winner 2012





GEBERIT RIMFREE® SOLUTIONS

# PERFECTLY CLEAN HOTEL GUEST ROOMS



## INNOVATIVE FLUSH TECHNOLOGY

Geberit Rimfree® WCs are equipped with a specially developed and patented flush guide which ensures a targeted and hygienic flush every time.

Keeping the bathroom clean and hygienic is important, especially in a high footfall hotel environment. Whether it's within guestrooms or a hotel lobby, room maintenance and cleaning should not be a hassle and dealing with tricky corners and hard to reach areas should be a problem of the past.

With the knowledge that a traditional WC harbour dirt and grime, Geberit has introduced a completely new and patented flush technology. The flow of water is controlled just before it reaches the ceramic pan. A flush guide sends the water stream along both sides to the exact area where it is needed for a clean and thorough flush.

TRADITIONAL WC



↑ Common WC pans depend on a flush rim which cannot easily be cleaned. Dirt and bacteria accumulate in this difficult to reach place resulting in unpleasant odours.

GEBERIT RIMFREE®



↑ With the Geberit Rimfree® technology however, there is no rim. The smooth inner surface of a Geberit Rimfree® WC pan is cleaned with one swipe. And best of all, one can see immediately if all dirt has been removed.

Rimfree

→ Find out more at [geberit.co.uk/rimfree](http://geberit.co.uk/rimfree)

# THE KERATECT® SPECIAL GLAZE

The Geberit KeraTect® special glazing ensures many years of protection for ceramic surfaces.

KeraTect® is baked on as a special glaze and has a virtually non-porous and extremely smooth surface that can be kept clean easily and efficiently.



## THE PROPERTIES OF KERATECT®

Virtually non-porous and extremely smooth

- Dirt-repellent, hygienic and clean
- Very easy to clean and look after
- Durable and scratchproof

→ Find out more at [geberit.co.uk/keratect](https://geberit.co.uk/keratect)



KeraTect®

# THE IMPORTANCE OF EMBEDDING ACOUSTIC CONSIDERATION INTO WASHROOM DESIGN

Often wastewater noise is neglected when planning a hotel washroom and the adjoining spaces. At Geberit, we have operated a sanitary sound laboratory from our head office in Switzerland since 1997. Unique to the industry, this facility allows Geberit to fully system test supply, sanitary ware and drainage and make informed recommendations for embedding acoustic considerations into washroom design. From acoustically-optimised pipework to decoupled pre-wall installation systems. Geberit offers a whole host of solutions to create a quieter, wellness enhanced washroom environment for your hotel project.



→ 28% OF PEOPLE SAY THEY ARE REGULARLY AFFECTED BY WASHROOM SOUNDS INCLUDING THE TOILET FLUSHING, DRAINAGE AND PIPES\*

→ 30% HAVE BEEN DISTURBED BY WASHROOM NOISE IN A HOTEL IN THE LAST 18 MONTHS\*

\*Source: YouGov Poll commissioned by Geberit. (2054 respondents, January 2020)

## ACOUSTIC SOLUTIONS



### WALL-HUNG WC

When choosing a WC always look to wall mount to decouple from the floor.



### OPTIMISED WALL-HUNG FRAME

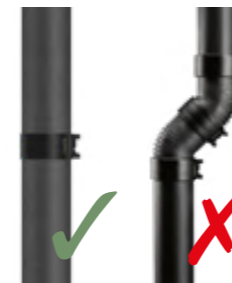
By designing in a Geberit Duofix frame you have already optimised your acoustic values. Integrated rubber tipped push rods to reduce noise from the flush plate when pressed for flushing, a polythene jacket insulating the cistern, circlips on threaded rods to eliminate movement and sound absorbing seals on drainage brackets - Geberit Duofix frames have it covered.



### PIPE BRACKET WITH SOUND INSULATION

Always choose pipe brackets with rubber lining and make sure they are not tightened too firmly. Never use cement for fastening components to the wall, as this could result in sound bridges.

By selecting Geberit pipe brackets with the appropriate diameter and tightening them fully, it is possible to achieve optimum fastening and sound insulation conditions.



### STACK WITHOUT DIRECTION CHANGE

Where possible, do not incorporate direction changes into stacks. Straight stacks have a lower effect on acoustic insulation.

If direction changes are unavoidable, however, take care to ensure that the angles of the resulting diversions are as small as possible.



### QUIET PIPES

Geberit Silent-db20 is highly sound optimised and satisfies numerous requirements with mineral reinforced polyethylene for a denser material and fittings to dissipate noise at impact zones, Geberit Silent-db20 adds value to any installation.



### INSULATION TAPE

Duofix insulation tape for structure-borne sound minimisation between panels, system rails and building structures.



### SOUND INSULATION PAD

When installing a WC, always use a sound insulation mat as well as sound insulation sleeves for the fastening screws.



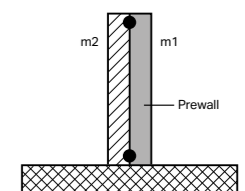
### INSULATION MATS

Wraps pipes and fittings to reduce airborne sound spreading.



### JOINTING METHOD

Electrofusion couplings maintain a smooth internal bore thus reducing noise transfer.



### PREWALL PROTECTION

The larger the ratio in mass per unit area between the prewall (m1) and the wall (m2), the better the joint insulation will be.

→ Find out more Geberit's Sound Solution white paper report at [geberit.co.uk/acoustics](http://geberit.co.uk/acoustics)

GEBERIT SILENT-DB20

# ROBUST CONNECTION FOR STRONG SOUND INSULATION

From guest bedrooms to spa areas to meeting rooms, noisy drainage pipes are a nuisance. This problem does not even occur with the Geberit Silent-db20 drainage system. The sound and hydraulically optimised pipes and fittings are suitable not only for stacks but also for floor connections and ensure quiet and effective drainage in any building.

## EFFECTIVE SOUND INSULATION

The high specific weight of Silent-db20 means that its natural vibrations are reduced and the sound is noticeably absorbed. The product design with special sound insulation ribs also reduces the noise on the impact zones.

## SPACE-SAVING CONSTRUCTION

The hydraulically optimised product geometry of the fittings enables a cost-effective dimensioning of the product with a high discharge rate. This creates new free spaces, as a space-saving configuration is also sufficient for the pipe ducts of the stacks.

## SOLUTIONS FOR EVERY TYPE OF BUILDING

With the Geberit Silent-db20 drainage system, practically any building drainage can be solved perfectly and without compromise. Geberit Silent-db20 is available in all standard pipe diameters between d56 – d160, and the assortment of fittings and accessories caters to virtually any need.

## INNOVATIVE FITTINGS

Geberit continuously develops its piping systems. For instance, the floor height can be reduced with the combined branch fitting, swept-entry for toilet and shower element.



→ Find out more at [geberit.co.uk/silent-db20](https://www.geberit.co.uk/silent-db20)



- Effective sound insulation
- High discharge capacity
- Varied options of use
- Available in all standard dimensions





# GEBERIT SUPERTUBE

## THE SPACE GAINING SYSTEM

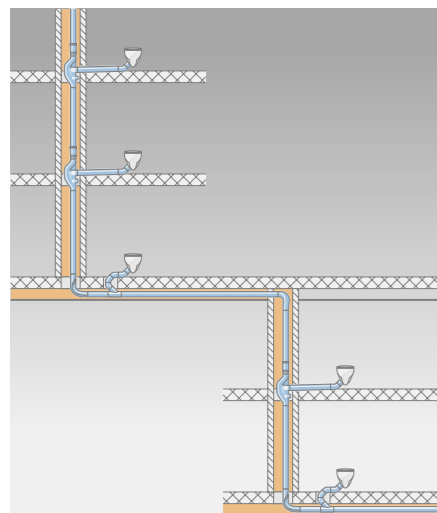
### HYDRAULICALLY OPTIMISED DRAINAGE OF HIGH-RISE BUILDINGS

Geberit SuperTube technology is based on the perfect interplay between system components, which enables waste water systems to be installed in a particularly space-saving manner in high-rise buildings. SuperTube means a parallel ventilation pipe is no longer required for the commercial floor space. Pipelines with consistently smaller dimensions allow smaller pipe ducts to be used. Horizontal pipelines can be laid to a length of up to six metres without a slope to save even more space.

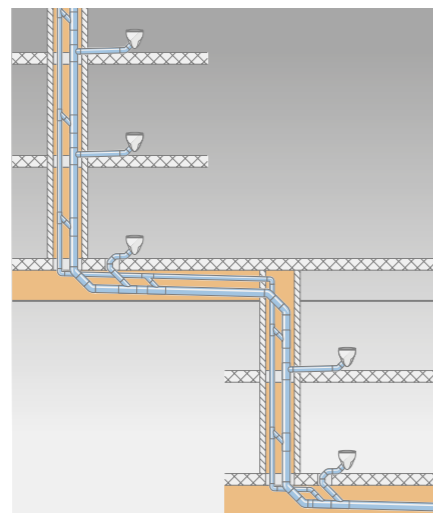
- More floor space
- Simple planning and quick installation
- Smaller, consistent pipe diameters of d110
- Maximum discharge capacity of 12 l/s
- No additional ventilation pipes required
- Horizontal pipelines without slopes (up to 6 m)

### SPACE-SAVING INSTALLATION

THE COMPARISON ILLUSTRATES THE DIFFERENCE:



↑  
With Geberit SuperTube, the discharge capacity is 12 l/s. This technology facilitates a consistent discharge pipe with a dimension of d110, meaning there is no need for ventilation pipe. What's more, the horizontal pipelines can be laid to a length of up to six metres without a slope.



↑  
A conventional discharge pipe achieves a discharge capacity of 12.4l/s with pipe dimension of d160 and an additional d90 ventilation pipe

→ Find out more at [geberit.co.uk/supertube](http://geberit.co.uk/supertube)



# SUSTAINABILITY AT GEBERIT

## CARE IN THE SQUARE

Geberit creates a sustainable quality of life with innovative water management, comprehensive Know-How and a strong focus on sustainability – across all products, sectors and processes.

It's an approach that really pays off for the environment and society, as well as customers, partners and employees. Our examples include products for green buildings – a market of the future – ethically aware training, outstanding logistics and every drop of water saved by Geberit products worldwide, that's what 'Care in the square' means to us.

## LEADING THE WAY IN GREEN LOGISTICS

In logistics, we have been attaching equal importance to both ecology and efficiency for many years. The logistics centre in Pfullendorf (DE) therefore sets the standard when it comes to green logistics.

From implementing automated works steps to embracing progressive technology, Geberit is focussed on supporting employees to carry out their work efficiently, safely and in an ergonomic manner. In addition, logistics partners are selected according to a clearly defined quality criteria and are contractually obligated as our preferred shippers to use energy efficiently – working together to reduce CO2 emissions.

## WATER SAVING SOLUTIONS

Efficient use of water and reducing water usage continue to be high on the agenda for many projects including hotels. At Geberit, we offer a wide range of sustainable solutions to support environmental assessment certification systems such as BREEAM and LEED – helping you to achieve great results for the planet and your pocket.



### EFFECTIVE DUAL FLUSH FOR COMMERCIAL

Our low litre flush cisterns are fully system tested with our WC pans to ensure compatibility and effective flushing even at low volumes, in line with the latest EN 997 Class 2 testing. This range of low litre flush solutions can contribute to achieving maximum BREEAM points for new non-domestic buildings. Our team of dedicated Specification Sales Managers are on hand to support you with achieving the maximum performance levels using effective flush volume calculations.



### TAPS

Using infrared taps can save up to 80% of standard water usage, as water is only used when the user is detected operating the tap. Flow reducers can also be used to further limit the volume of water delivered, in addition Geberit storage generators can store energy produced by the initial water delivery and utilise this stored energy as opposed to electricity to generate further water deliveries.



### URINALS

Geberit offers a wide range of water saving urinal solutions for your next hotel project. An optimum flush of the Geberit Urinal System is possible with only 0.5l of water. An even smaller amount of water consumption is achieved with an intelligent interval flush or with waterless operation.

→ Discover more at our sustainability strategy at [geberit.co.uk/sustainability](https://geberit.co.uk/sustainability)


→ View our full range of frames and cisterns at [geberit.co.uk/duofix](https://geberit.co.uk/duofix)


→ View the range at [geberit.co.uk/infraredtaps](https://geberit.co.uk/infraredtaps)


→ View the range at [geberit.co.uk/urinals](https://geberit.co.uk/urinals)


# GETTING IT RIGHT DESIGN AND PLANNING

At Geberit, our specialist in-house specification team has a breadth of capabilities and industry knowledge to help and support you throughout your development. Working with you, our team is able to facilitate and cover:


 Supply systems & drainage quotations


 Chemical compatibility


 Sanitaryware specifications

 Standard details - 2D/3D designs

 Virtual Worlds

 BIM catalogue plugin

 Siphonic roof drainage feasibility designs

 Specification enquiries

→ Find out how we can support your next project at [geberit.co.uk/specificationsupport](https://www.geberit.co.uk/specificationsupport)

# VISIT OUR SHOWROOM

Our state of the art Warwick showroom demonstrates our ability to provide an end to end bathroom solution whatever the project or application. The realistic room sets from Geberit include furniture, ceramics, shower enclosures and flush plates so you can visualise the complete designed room.

You can also experience fully working Geberit AquaClean shower toilets which will allow you to try all of the innovative functions on offer. Our behind-the-wall technologies such as frames, supply and drainage piping are also on display, and to complete the experience we have a functioning hydraulics tower that demonstrates good drainage design.



# DEDICATED SUPPORT AND TRAINING

From planning to logistics to stock availability and aftersales, we're exceeding expectations to offer you a wide range of products to suit your hotel project. At Geberit, we have dedicated team in place to support you from start to finish.

## CLEANING AND MAINTENANCE

We're on hand to train your housekeeping and maintenance teams to ensure they know how to correctly maintain and clean our products for optimal performance. Speak to your dedicated Specification Sales Manager for more information.

→ Get in touch by visiting [geberit.co.uk/contactus](http://geberit.co.uk/contactus)

## INSTALLATION

Geberit provide a free, comprehensive CIPHE accredited installation and product training for your installers and contractors— offering a choice of visiting the Warwick Training Academy or delivery of the training on site, the program offers flexibility to suit your needs.

→ For more information visit [geberit.co.uk/training](http://geberit.co.uk/training)

