

Maximum reliability. Minimum fuss.



Selector Guide

---

# Kingspan KingZip IP

**Kingspan**

**Fastener Systems and Sealing Products**

# Contents

Products for Specific Applications	3 - 7
Accessories	8
Technical Data	9 - 10
Technical Notes	11

## Introduction to Fixfast

Fixfast design, manufacture and supply specialist building fasteners and components for the walls and roofs of industrial, commercial and larger residential buildings. We collaborate with major building envelope system manufacturers, such as Kingspan, to provide them and their clients with engineered fastening and sealing solutions.

This selector guide has been created as an easy to use reference document, identifying the most common fasteners and components for use when installing the Kingspan KingZip IP panel system.

Full technical data for these products along with application uses can be found on our website at [www.fixfast.com](http://www.fixfast.com) by searching for the product.

Our specification team can assist in providing NBS specifications for specific projects, whilst our customer services team can answer questions regarding the usage or ordering of Fixfast products.

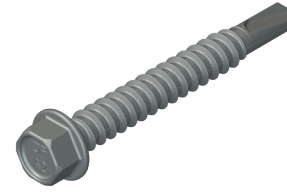
If you have any queries regarding our products or services then please do contact our customer services team on 0800 304 7616 or by emailing [sales@fixfast.com](mailto:sales@fixfast.com).

## KingZip IP primary fixing - halter to cold rolled steel 1.2 - 3.0mm

### Use DrillFast® stainless steel halter fasteners

8mm hex head, use Fixfast GreenDrive.

Use 2 fixings per halter for the KS500 and 3 fixings per halter for the KS1000.



#### Fastener Code

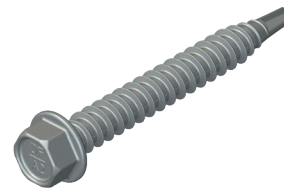
DF3-SS-6.0 x 45

## KingZip IP primary fixing - halter to timber

### Use DrillFast® stainless steel halter fasteners

8mm hex head, use Fixfast GreenDrive.

Use 2 fixings per halter for the KS500 and 3 fixings per halter for the KS1000.



#### Fastener Code

DF2-SS-6.0 x 45

## KingZip IP primary fixing to light steel at verge side

### Use DrillFast® stainless steel high thread fasteners

8mm hex head, use Fixfast GreenDrive.

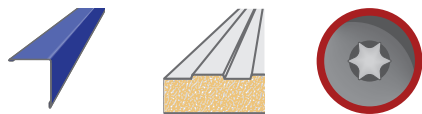


To suit panel size (mm)	Fastener Code
45	DF3-SS-HT-A19-5.5 x 85
90	DF3-SS-HT-A19-5.5 x 130
110	DF3-SS-HT-A19-5.5 x 150
124	DF3-SS-HT-A19-5.5 x 150
147	DF3-SS-HT-A19-5.5 x 180

## KingZip IP end lap stitcher

### Use Drillfast low profile stainless steel stitching fastener with bonded washer

Low profile TX25 head, use Fixfast RedDrive.



#### Fastener Code

DF2-SSA4-P-S19-6.3 x 25

## Vapour sealant

Use A Class butyl strip sealant



Sealant Code	Dimensions (mm)	Roll Length (m)
A-6 dia x 8	6mm bead	8

## PVC foam tape for all internal air sealing

Use PVC foam air sealing tape



Sealant Code	Thickness x width (mm)	Roll Length (m)
AST-6 x 20 x 12	6 x 20	12

## Fire resistant construction foam for filling ridge and hip junctions

### Use Firefoam B1



Sealant Code	Cartridge Size (ml)	Fitting
FIREFOAM-B1-GUN	750	Screwtop
FIREFOAM-B1-HAND	750	Manual

## Bedding sealant for filler blocks at ridges and hips. Also for use in internal air sealing applications

### Use Seelex BR gun grade butyl rubber sealant

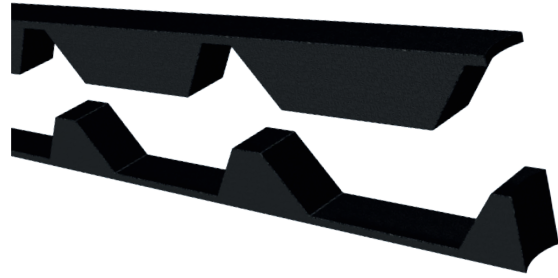


Sealant Code	Cartridge Size (ml)	Colour
SEELEX-BR	380	Grey or White

## EPDM Foam – Filler blocks

### Use EPDM foam fillers

Also available in fire resistant material.  
Please enquire for details.



### Sealant Code

EPDM FILLER - Kingzip IP

### GreenDrive

One-piece drive socket for DrillFast® stainless fasteners, supports the head for easy accurate driving.

**Product Code:** GREENDRIVE



### RedDrive

One-piece drive socket for DrillFast® low profile fasteners, supports the head for easy accurate driving.

**Product Code:** REDDRIVE



Many other tools and accessories are available.

Please see the current Fixfast Product Directory, go to [www.fixfast.com](http://www.fixfast.com), or ask the Fixfast customer service team.



## Technical Data

DF3-SS-6.0 Range	
Material	1.4301 stainless steel (304M), with steel case hardened welded point
Coating	Organic
Drilling Capacity	1.2mm - 3.0mm steel
Pull-out Values (axial load resistance)	
Substrate	Characteristic value
1.5mm Steel	2.19kN
2.0mm Steel	3.06kN
3.0mm Steel	6.37kN

DF2-SS-6.0 Range	
Material	1.4301 stainless steel (304M), with steel case hardened welded point
Coating	Organic
Drilling Capacity	0.5mm - 2.0mm steel
Pull-out Values (axial load resistance)	
Substrate	Characteristic value
0.5mm Steel	0.69kN
1.2mm Steel	2.67kN
2.0mm Steel	4.83kN
Softwood 35mm Embedment	<i>Please contact customer service for details</i>

## Technical Data

DF3-SS-HT-5.5 Range	
Material	1.4301 stainless steel (304M), with steel case hardened welded point
Coating	Organic
Drilling Capacity	1.2mm - 3.0mm steel
Pull-out Values (axial load resistance)	
Substrate	Characteristic value
1.2mm Steel	1.30kN
2.0mm Steel	2.62kN
3.0mm Steel	4.76kN
Softwood 35mm Embedment	3.57kN

DF2-SS-P-6.3 x 25	
Material	1.4301 stainless steel (304M), with steel case hardened welded point
Coating	Organic
Drilling Capacity	Max 2 sheets 1.0mm S275 steel
Pull-out Values (axial load resistance)	
Fastener	Characteristic value
DF2-SS-P-6.3 x 25	0.60kN

### Fastener Data

- + All dimensions are subject to manufacturing tolerances.
- + Performance values are tested and calculated according to Eurocode procedures and appropriate safety factors should be applied in any calculations using these values.

### Fastener Selection

- + Recommended fastener lengths are calculated using standard tolerances for the fasteners and the combination of materials in the build-up.
- + If there is distortion in the supporting construction, or other non-standard application detail, longer fasteners may be necessary than those shown. Always check the actual circumstances before deciding on a particular length.

### Further Assistance

- + For any enquiry, or to discuss your requirements with someone knowledgeable, call the Fixfast customer service team on **0800 304 7616**.
- + Full literature is available for the Fixfast range, or visit **www.fixfast.com**
- + Other performance data may be available on request. For more unusual applications, tests can be carried out in our in-house technical centre to provide the necessary data.
- + Site visits are also possible, particularly for pull-out performance into concrete, masonry or other variable substrates. Please ask for a Site Visit Request form if you think this service would be useful.
- + CAD files of fasteners are available on request for inclusion in drawings.

The information contained in this document is based on the specification of the Kingspan KingZip IP system and Fixfast's product data. It is provided in good faith but Fixfast cannot be held liable for any errors. Performance is dependent on adherence to the conditions and instructions contained in Fixfast's Technical Data Sheets for the products shown. Performance values should be approved by a qualified engineer, and Fixfast recommend preliminary tests for any application where variation is possible in the materials or substrates involved.



Merlin House  
Seven Mile Lane  
Borough Green  
Sevenoaks  
Kent  
TN15 8QY

**Enquiries**

0800 304 7616

**International**

+44 (0) 1732 882387

**Fax**

0845 450 7486

**Email**

info@fixfast.com



Certificate number 10905  
ISO 9001, ISO 14001  
OHSAS 18001