

Maximum reliability. Minimum fuss.



Selector Guide

---

# KINGSPAN Envirodek

**Kingspan**

Fastener Systems and Sealing Products

# Contents

Products for Specific Applications	<b>3 - 7</b>
Accessories	<b>8</b>
Technical Data	<b>9 - 12</b>
Technical Notes	<b>13</b>

## Introduction to Fixfast

Fixfast design, manufacture and supply specialist building fasteners and components for the walls and roofs of industrial, commercial and larger residential buildings. We collaborate with major building envelope system manufacturers, such as Kingspan, to provide them and their clients with engineered fastening and sealing solutions.

This selector guide has been created as an easy to use reference document, identifying the most common fasteners and components for use when installing the Kingspan Envirodek panel system.

Full technical data for these products along with application uses can be found on our website at [www.fixfast.com](http://www.fixfast.com) by searching for the product.

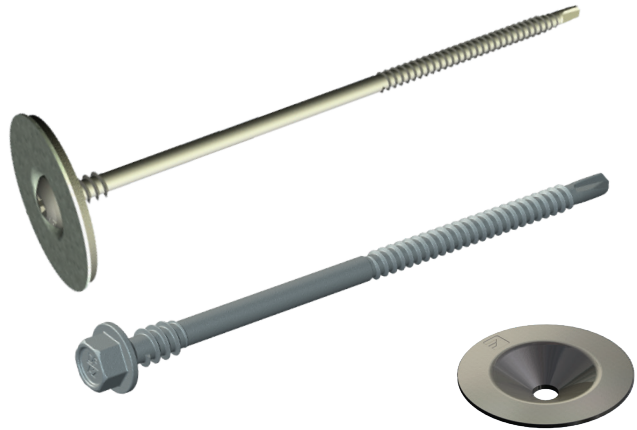
Our specification team can assist in providing NBS specifications for specific projects, whilst our customer services team can answer questions regarding the usage or ordering of Fixfast products.

If you have any queries regarding our products or services then please do contact our customer services team on 0800 304 7616 or by emailing [sales@fixfast.com](mailto:sales@fixfast.com).

## Envirodek primary fixing to cold rolled steel 1.2mm - 3.0mm

### Use DrillFast® SFW fasteners or DrillFast® fasteners with SP-40-DD dished washer

Low profile TX25 head, use Fixfast RedDrive.  
8mm hex head, use Fixfast GreenDrive for stainless fasteners and Fixfast YellowDrive for carbon fasteners.



Panel Core Thickness	Total Panel Thickness	Fastener Code Stainless	Fastener Code Carbon
66	174	DF3-SSA4-P-HT-SFW-5.5 x 240	DF3-HT-5.5 x 200 (with SP-40-DD)
102	210	DF3-SSA4-P-HT-SFW-5.5 x 240	DF3-HT-5.5 x 250 (with SP-40-DD)
126	228	DF3-SS-HT-5.5 x 275 (with SP-40-DD)	DF3-HT-5.5 x 250 (with SP-40-DD)

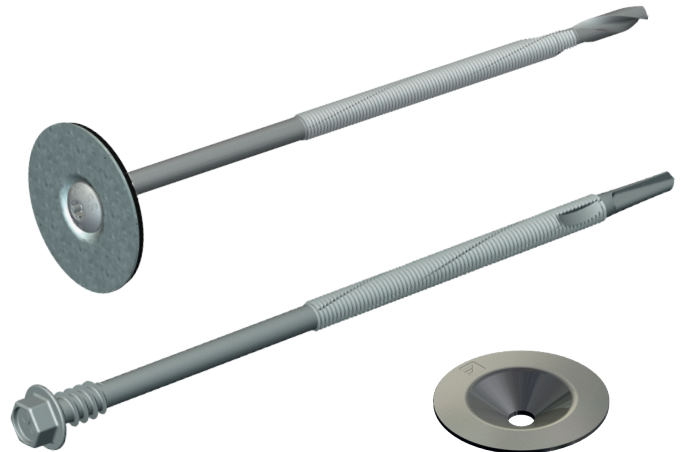
Please specify the above and add to the fastener code when ordering

For fixing panels to timber, please contact Fixfast Customer Service team on **0800 304 7616**

## Envirodek primary fixing to hot rolled steel 4.0 - 12.0mm

### Use DrillFast® SFW fasteners or use DrillFast® fasteners with SP-40-DD dished washer

Low profile TX25 head, use Fixfast RedDrive.  
8mm hex head, use Fixfast GreenDrive for stainless fasteners and Fixfast YellowDrive for carbon fasteners.



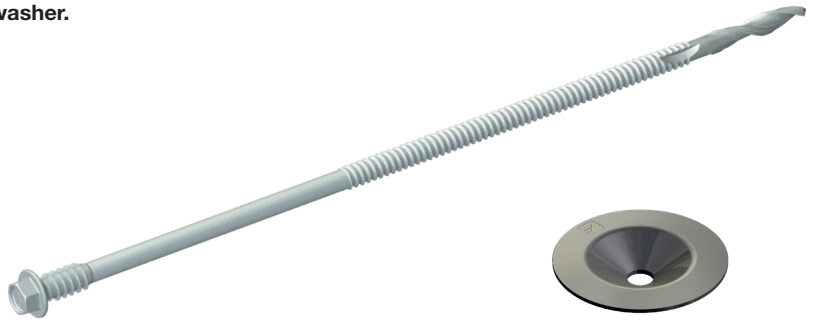
Panel Core Thickness	Total Panel Thickness	Fastener Code Stainless	Fastener Code Carbon
66	174	DF12-SSA4-P-HT-SFW-5.5 x 230	DF12-HT-5.5 x 205 (with SP-40-DD)
102	210	DF12-SSA4-P-HT-SFW-5.5 x 230	DF12-HT-5.5 x 255 (with SP-40-DD)
126	228	DF12-SS-HT-5.5 x 300 (with SP-40-DD)	DF12-HT-5.5 x 305 (with SP-40-DD)

Please specify the above and add to the fastener code when ordering

## Envirodek primary fixing to heavy steel 8.0 - 25.0mm

Use DrillFast® stainless fasteners with SP-40-DD dished washer.

8mm hex head, use Fixfast GreenDrive.



Panel Core Thickness	Panel Overall Thickness	Fastener Code
66	174	DF25-SSA4-HT-6.3 x 275 (with SP40-DD)
102	210	DF25-SSA4-HT-6.3 x 325 (with SP40-DD)
126	228	DF25-SSA4-HT-6.3 x 325 (with SP40-DD)

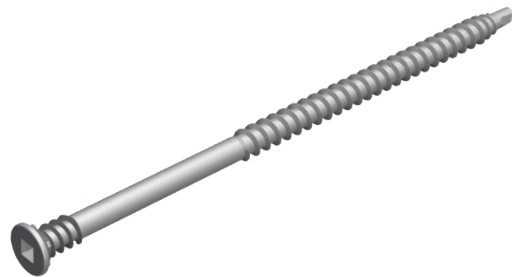
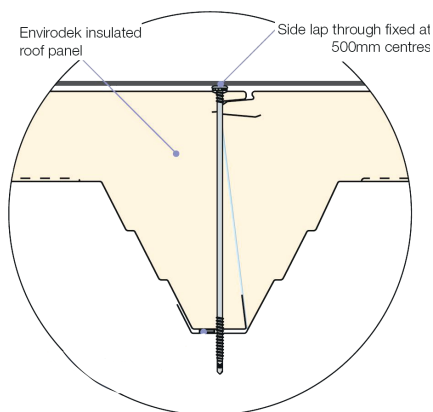
Code for the dished washer: SP-40-DD

Please specify the above and add to the fastener code when ordering

## Envirodek stitching fastener for side laps: Option 1

Use SureFast fasteners.

Countersunk head, 2SQ recess, use Fixfast 2SQ drivebar.



Panel Overall Thickness	Fastener Code
174	SF-RS-CL-5.2 x 200
210	SF-RS-CL-5.2 x 250
228	SF-RS-CL-5.2 x 250

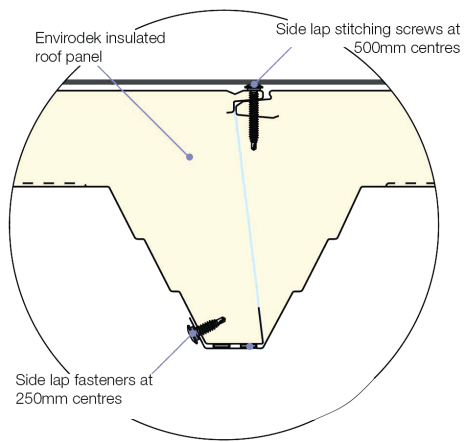
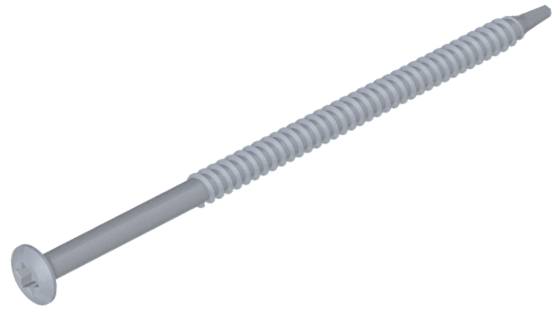
## Envirodek stitching fastener for side laps: Option 2

### Use DrillFast® and SureFast stitching fasteners.

Low profile head, use Fixfast RedDrive for stainless steel low profile fasteners.

Low profile head, use Fixfast RedDrive for carbon steel low profile fasteners.

Oval TX25 head, use Fixfast TX25 drivebar for SureFast stainless and carbon fasteners.



Fastener Code Stainless	Fastener Code Carbon
SF-RS-SSA4-4.8 x 60 (top)	SF-RS-5.8 x 55 (top)
DF2-SSA4-PL-A19-6.3 x 25 (bottom) + colour	DF3-DPL-A19-5.5 x 25 (bottom) + colour



## Air seal to panel side joint

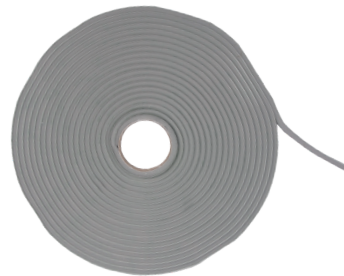
Use Seelex BR gun grade butyl rubber sealant



Sealant Code	Cartridge Size (ml)	Colour
SEELEX-BR	380	Grey or White

## End and side lap sealant

Use A Class butyl strip sealant



Sealant Code	Thickness x Width (mm)	Roll Length (m)
A-5 x 6 x 9.6	5 x 6	9.6

## Fire rated seal for side laps

Use Seelex FR fire rated sealant



Sealant Code	Cartridge Size (ml)	Colour
SEELEX-FR	310	White

## Fire rated foam insulation

### Use Firefoam B1



Sealant Code	Cartridge Size (ml)	Fitting
FIREFOAM-B1-GUN	750	Screwtop
FIREFOAM-B1-HAND	750	Manual

## All internal air sealing

### Use PVC foam air sealing tape

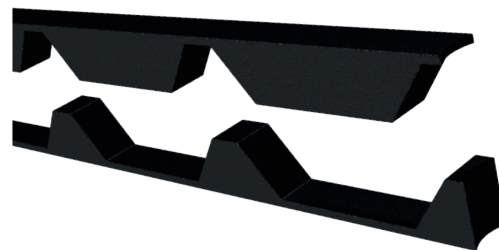


Sealant Code	Thickness x Width (mm)	Roll Length (m)
AST-6 x 20 x 12	6 x 20	12

## Filler blocks

### Use EPDM foam fillers

Also available in fire resistant material.  
Please enquire for details.



#### Sealant Code

EPDM KINGSPAN ENVIRODEK

### GreenDrive

One-piece drive socket for DrillFast® stainless fasteners, supports the head for easy accurate driving.



**Product Code:** GREENDRIVE

### YellowDrive

One-piece drive socket for DrillFast® carbon fasteners, supports the head for easy accurate driving.



**Product Code:** YELLOWDRIVE

### RedDrive

One-piece drive socket for DrillFast® low profile fasteners, supports the head for easy accurate driving.



**Product Code:** REDDRIVE

### 2SQ Drivebar

One-piece drivebar for SureFast fasteners, supports the head for easy accurate driving.



**Product Code:** 50-2SQ

### TX25 Drivebar

One-piece drivebar for SureFast fasteners, supports the head for easy accurate driving.



**Product Code:** 50-TX25

Many other tools and accessories are available.

Please see the current Fixfast Product Directory, go to [www.fixfast.com](http://www.fixfast.com), or ask the Fixfast customer service team.



## Technical Data

DF3-SS-HT-5.5 Range	
Material	1.4301 stainless steel (304M), with steel case hardened welded point
Coating	Organic
Drilling Capacity	1.2mm - 3.0mm steel
Pull-out Values (axial load resistance)	
Substrate	Characteristic value
1.2mm Steel	1.30kN
2.0mm Steel	2.62kN
3.0mm Steel	4.76kN
Softwood 35mm Embedment	3.57kN

DF3-HT-5.5 Range	
Material	Steel SAE1022 case hardened
Coating	Organic
Drilling Capacity	1.2mm - 3.0mm steel
Pull-out Values (axial load resistance)	
Substrate	Characteristic value
1.2mm Steel	1.52kN
2.0mm Steel	3.01kN
3.0mm Steel	5.42kN
Softwood 35mm Embedment	3.57kN

DF12-SS-HT-5.5 Range	
Material	1.4301 Stainless steel (304M), with steel case hardened welded point
Coating	Organic
Drilling Capacity	4.0mm - 12.0mm steel
Pull-out Values (axial load resistance)	
Substrate	Characteristic value
4.0mm Steel	2.80kN
6.0mm Steel	3.09kN
8.0mm Steel	6.89kN
12.0mm Steel	6.89kN

## Technical Data

DF12-HT-5.5 Range	
Material	SAE1022 steel case hardened
Coating	Organic
Drilling Capacity	4.0mm - 12.0mm steel
Pull-out Values (axial load resistance)	
Substrate	Characteristic value
4.0mm Steel	5.44kN
6.0mm Steel	12.75kN
8.0mm Steel	13.92kN
12.0mm Steel	13.92kN

DF25-SSA4-HT-6.3 Range	
Material	1.4401 stainless steel (316M), with steel case hardened welded point
Coating	Organic
Drilling Capacity	8.0mm - 25.0mm steel
Pull-out Values (axial load resistance)	
Substrate	Characteristic value
8.0mm Steel	10.82kN
12.0mm Steel	10.82kN
25.0mm Steel	10.82kN

SF-RS-CL-5.2 x 200	
Material	Steel SAE1022 case hardened
Coating	Organic
Drilling Capacity	Max 2 x 1.0mm S275 steel
Pull-out Values (axial load resistance)	
Substrate	Characteristic value
0.7mm Steel	0.94kN
0.9mm Steel	1.47kN
1.2mm Steel	2.05kN
18.0mm OSB	1.52kN
Softwood 35mm embedment	4.23kN
18.0mm Ply	2.01kN

## Technical Data

SF-RS-5.8 x 55	
Material	SAE1022 steel case hardened
Coating	Organic
Drilling Capacity	Max 2 x 1.0mm S275 steel
Pull-out Values (axial load resistance)	
Substrate	Characteristic value
0.5mm Steel	0.84kN
0.7mm Steel	1.43kN
0.9mm Steel	1.93kN
1.2mm Steel	2.87kN
18.0mm Ply	2.10kN
18.0mm OSB	1.58kN
Softwood 35mm embedment	4.06kN

SF-RS-SSA4-4.8 x 60	
Material	A4 stainless steel, with SAE1022 steel case hardened welded point
Coating	Organic
Drilling Capacity	Max 2 x 1.0mm S275 steel
Pull-out Values (axial load resistance)	
Substrate	Characteristic value
0.7mm Steel	1.08kN
0.9mm Steel	1.45kN
1.2mm Steel	2.24kN
18.0mm Ply	1.77kN
18.0mm OSB	1.37kN
Softwood 35mm embedment	3.89kN

## Technical Data

DF3-DPL-5.5 x 25	
Material	SAE1022 steel case hardened
Coating	Organic
Drilling Capacity	0.5 - 3.0mm S275 steel
Pull-out Values (axial load resistance)	
Substrate	Characteristic value
0.5mm Steel	0.68kN
1.2mm Steel	1.52kN
2.0mm Steel	3.01kN
3.0mm Steel	5.42kN

DF2-SSA4-PL-6.3 x 25	
Material	1.4401 stainless steel (316M), with steel case hardened welded point
Coating	Organic
Drilling Capacity	Max 2 x 1.0mm thick S275 Steel
Pull-out Values (axial load resistance)	
Substrate	Characteristic value
0.5mm Steel	0.60kN

### Fastener Data

- + All dimensions are subject to manufacturing tolerances.
- + Performance values are tested and calculated according to Eurocode procedures and appropriate safety factors should be applied in any calculations using these values.

### Fastener Selection

- + Recommended fastener lengths are calculated using standard tolerances for the fasteners and the combination of materials in the build-up.
- + If there is distortion in the supporting construction, or other non-standard application detail, longer fasteners may be necessary than those shown. Always check the actual circumstances before deciding on a particular length.

### Further Assistance

- + For any enquiry, or to discuss your requirements with someone knowledgeable, call the Fixfast customer service team on **0800 304 7616**.
- + Full literature is available for the Fixfast range, or visit **www.fixfast.com**
- + Other performance data may be available on request. For more unusual applications, tests can be carried out in our in-house technical centre to provide the necessary data.
- + Site visits are also possible, particularly for pull-out performance into concrete, masonry or other variable substrates. Please ask for a Site Visit Request form if you think this service would be useful.
- + CAD files of fasteners are available on request for inclusion in drawings.

The information contained in this document is based on the specification of the Kingspan Envirotek system and Fixfast's product data. It is provided in good faith but Fixfast cannot be held liable for any errors. Performance is dependent on adherence to the conditions and instructions contained in Fixfast's Technical Data Sheets for the products shown. Performance values should be approved by a qualified engineer, and Fixfast recommend preliminary tests for any application where variation is possible in the materials or substrates involved.







Merlin House  
Seven Mile Lane  
Borough Green  
Sevenoaks  
Kent  
TN15 8QY

**Enquiries**  
0800 304 7616

**International**  
+44 (0) 1732 882387

**Fax**  
0845 450 7486

**Email**  
info@fixfast.com



Certificate number 10905  
ISO 9001, ISO 14001  
OHSAS 18001

