

Maximum reliability. Minimum fuss.



Selector Guide

Trimo - Trimoterm FTV

Trimo

Fastener Systems and Sealing Products

Contents

| | |
|------------------------------------|---------|
| Products for Specific Applications | 3 - 8 |
| Accessories | 9 |
| Technical Data | 10 - 11 |
| Technical Notes | 12 |

Introduction to Fixfast

Fixfast design, manufacture and supply specialist building fasteners and components for the walls and roofs of industrial, commercial and larger residential buildings. We collaborate with major building envelope system manufacturers, such as Trimo, to provide them and their clients with engineered fastening and sealing solutions.

This selector guide has been created as an easy to use reference document, identifying the most common fasteners and components for use when installing the Trimoterm FTV panel system.

Full technical data for these products along with application uses can be found on our website at www.fixfast.com by searching for the product.

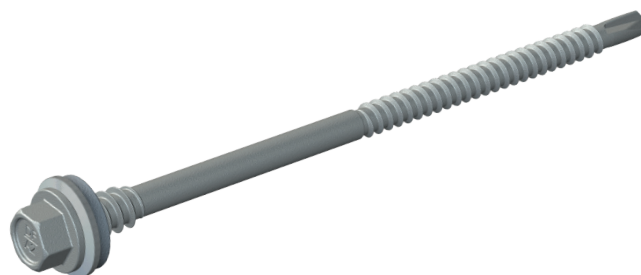
Our specification team can assist in providing NBS specifications for specific projects. While our customer services team can answer questions regarding the usage or ordering of Fixfast products.

If you have any queries regarding our products or services then please do contact our customer services team on 0800 304 7616 or by emailing sales@fixfast.com.

Fixing Trimoterm FTV panel to steel: 1.2 - 3.0mm

Use DrillFast® Stainless DF3-SS-HT fasteners.

8mm hex head, use Fixfast GreenDrive for stainless fasteners.



| Application | Total Panel Thickness (mm) | Fastener Code |
|-------------|----------------------------|-------------------------|
| Face Fixed | 50 | DF3-SS-HT-A15-5.5 x 85 |
| | 60 | DF3-SS-HT-A15-5.5 x 85 |
| | 80 | DF3-SS-HT-A15-5.5 x 110 |
| | 100 | DF3-SS-HT-A15-5.5 x 130 |
| | 120 | DF3-SS-HT-A15-5.5 x 150 |
| | 150 | DF3-SS-HT-A15-5.5 x 180 |
| | 175 | DF3-SS-HT-A15-5.5 x 225 |
| | 200 | DF3-SS-HT-A15-5.5 x 225 |
| | 240 | DF3-SS-HT-A15-5.5 x 275 |

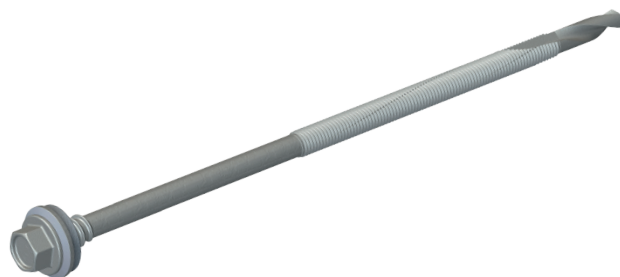


| Application | Total Panel Thickness (mm) | Fastener Code |
|------------------------|----------------------------|---------------------|
| HF102 Recessed Profile | 50 | DF3-SS-5.5 x 35 |
| | 60 | DF3-SS-5.5 x 55 |
| | 80 | DF3-SS-HT-5.5 x 85 |
| | 100 | DF3-SS-HT-5.5 x 110 |
| | 120 | DF3-SS-HT-5.5 x 130 |
| | 150 | DF3-SS-HT-5.5 x 150 |
| | 175 | DF3-SS-HT-5.5 x 180 |
| | 200 | DF3-SS-HT-5.5 x 225 |
| | 240 | DF3-SS-HT-5.5 x 225 |

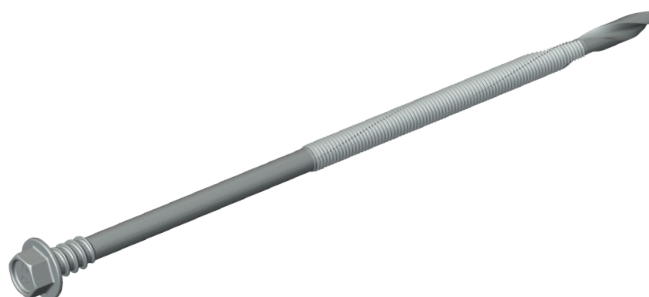
Fixing Trimoterm FTV panel to steel: 4.0 - 12.0mm

Use DrillFast® stainless DF12-SS-HT fasteners.

8mm hex head, use Fixfast GreenDrive.



| Application | Total Panel Thickness (mm) | Fastener Code |
|-------------|----------------------------|--------------------------|
| Face Fixed | 50 | DF12-SS-HT-A15-5.5 x 115 |
| | 60 | DF12-SS-HT-A15-5.5 x 115 |
| | 80 | DF12-SS-HT-A15-5.5 x 150 |
| | 100 | DF12-SS-HT-A15-5.5 x 150 |
| | 120 | DF12-SS-HT-A15-5.5 x 200 |
| | 150 | DF12-SS-HT-A15-5.5 x 200 |
| | 175 | DF12-SS-HT-A15-5.5 x 250 |
| | 200 | DF12-SS-HT-A15-5.5 x 250 |
| | 240 | DF12-SS-HT-A15-5.5 x 300 |

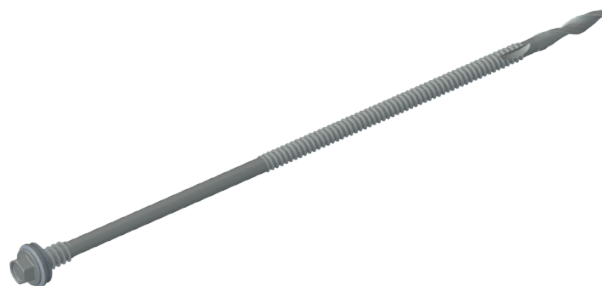


| Application | Total Panel Thickness (mm) | Fastener Code |
|------------------------|----------------------------|----------------------|
| HF102 Recessed Profile | 50 | DF12-SS-5.5 x 60 |
| | 60 | DF12-SS-5.5 x 80 |
| | 80 | DF12-SS-HT-5.5 x 115 |
| | 100 | DF12-SS-HT-5.5 x 115 |
| | 120 | DF12-SS-HT-5.5 x 150 |
| | 150 | DF12-SS-HT-5.5 x 200 |
| | 175 | DF12-SS-HT-5.5 x 200 |
| | 200 | DF12-SS-HT-5.5 x 250 |
| | 240 | DF12-SS-HT-5.5 x 250 |

Fixing Trimoterm FTV to very heavy steel: 8.0 - 25.0mm

Use DrillFast® Stainless DF25-SSA4-HT fasteners.

8mm hex head, use Fixfast GreenDrive.



| Application | Total Panel Thickness (mm) | Fastener Code |
|-------------|----------------------------|----------------------------|
| Face Fixed | 50 | n/a |
| | 60 | n/a |
| | 80 | n/a |
| | 100 | DF25-SSA4-HT-A15-6.3 x 225 |
| | 120 | DF25-SSA4-HT-A15-6.3 x 225 |
| | 150 | DF25-SSA4-HT-A15-6.3 x 225 |
| | 175 | DF25-SSA4-HT-A15-6.3 x 275 |
| | 200 | DF25-SSA4-HT-A15-6.3 x 275 |
| | 240 | DF25-SSA4-HT-A15-6.3 x 325 |

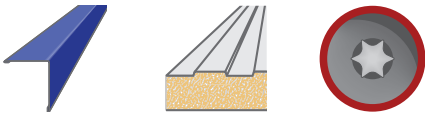


| Application | Total Panel Thickness (mm) | Fastener Code |
|------------------------|----------------------------|------------------------|
| HF102 Recessed Profile | 50 | n/a |
| | 60 | n/a |
| | 80 | n/a |
| | 100 | DF25-SSA4-HT-6.3 x 225 |
| | 120 | DF25-SSA4-HT-6.3 x 225 |
| | 150 | DF25-SSA4-HT-6.3 x 225 |
| | 175 | DF25-SSA4-HT-6.3 x 225 |
| | 200 | DF25-SSA4-HT-6.3 x 275 |
| | 240 | DF25-SSA4-HT-6.3 x 275 |

Fixing flashing/trim to Trimoterm FTV panel skin

Use DrillFast® Lacquered stitching fastener with bonded washer.

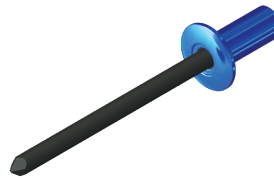
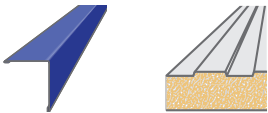
Pan TX25 head, use Fixfast RedDrive.



Fastener Code

DF2-SSA4-PL-S15-6.3 x 25 + colour

Use stainless steel sealed head lacquered rivet.



Fastener Code

RSH-AS-LAC-4.8 x 11 + colour

Seelex BR – for bedding and sealing flashings

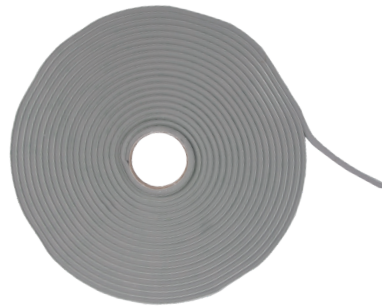
Use Seelex BR gun grade butyl rubber sealant.



| Sealant Code | Cartridge Size (ml) | Colour |
|--------------|---------------------|---------------|
| SEELEX-BR | 380 | Grey or White |

Butyl Strip Sealant – Sealing side laps

Use A Class butyl strip sealant



| Sealant Code | Thickness x Width (mm) | Roll Length (m) |
|---------------|------------------------|-----------------|
| A-5 x 6 x 9.6 | 5 x 6 | 9.6 |

Filling cavities at ridges and junctions

Use Firefoam B1.



| Sealant Code | Cartridge Size (ml) | Fitting |
|------------------|---------------------|----------|
| FIREFOAM-B1-GUN | 750 | Screwtop |
| FIREFOAM-B1-HAND | 750 | Manual |

Sealing around penetrations

Use AD series pipe flashings



Code

AD Series pipe flashings

GreenDrive

One-piece drive socket for DrillFast® stainless fasteners, supports the head for easy accurate driving.

Product Code: GREENDRIVE



RedDrive

One-piece drive socket for DrillFast® low profile fasteners, supports the head for easy accurate driving.

Product Code: REDDRIVE



Many other tools and accessories are available.

Please see the current Fixfast Product Directory, go to www.fixfast.com, or ask the Fixfast customer service team.

Technical Data

| DF3-SS-HT-5.5 Range | |
|---|--|
| Material | 1.4301 stainless steel (304M), with steel case hardened welded point |
| Coating | Organic |
| Drilling Capacity | 1.2mm - 3.0mm steel |
| Pull-out Values (axial load resistance) | |
| Substrate | Characteristic value |
| 1.2mm Steel | 1.30kN |
| 2.0mm Steel | 2.62kN |
| 3.0mm Steel | 4.76kN |
| Softwood 35mm Embedment | 3.57kN |

| DF12-SS-HT-5.5 Range | |
|---|---|
| Material | 1.4301 stainless steel (304M) with case hardened welded point |
| Coating | Organic |
| Drilling Capacity | 4.0mm - 12.0mm steel |
| Pull-out Values (axial load resistance) | |
| Substrate | Characteristic value |
| 4.0mm Steel | 2.80kN |
| 6.0mm Steel | 3.09kN |
| 8.0mm Steel | 6.89kN |
| 12.0mm Steel | 6.89kN |

| DF25-SSA4-HT-6.3 Range | |
|---|--|
| Material | 1.4401 stainless steel (316M), with steel case hardened welded point |
| Coating | Organic |
| Drilling Capacity | 8.0mm - 25.0mm steel |
| Pull-out Values (axial load resistance) | |
| Substrate | Characteristic value |
| 8.0mm Steel | 10.82kN |
| 12.0mm Steel | 10.82kN |
| 25.0mm Steel | 10.82kN |

Technical Data

DF2-SS-A4-PL-6.3 x 25

| | |
|--|---|
| Material | 1.4401 stainless steel (316M) with steel case hardened welded point |
| Coating | Organic |
| Drilling Capacity | 2 sheets 1.0mm thick |
| Pull-out Values (axial load resistance) | |
| Substrate | Characteristic value |
| 0.5mm Steel | 0.60kN |

RSH-AS-LAC-4.8 x 11

| | |
|-----------------------|--|
| Material | Aluminium with stainless steel mandrel |
| Body diameter (mm) | 4.8 |
| Drill size (mm) | 4.9 |
| Head diameter | 9.5 |
| Rivet length (mm) | 11.5 |
| Mandrel diameter (mm) | 2.6 |
| Grip range max (mm) | 6.4 |

Fastener Data

- + All dimensions are subject to manufacturing tolerances.
- + Performance values are tested and calculated according to Eurocode procedures and appropriate safety factors should be applied in any calculations using these values.

Fastener Selection

- + Recommended fastener lengths are calculated using standard tolerances for the fasteners and the combination of materials in the build-up.
- + If there is distortion in the supporting construction, or other non-standard application detail, longer fasteners may be necessary than those shown. Always check the actual circumstances before deciding on a particular length.

Further Assistance

- + For any enquiry, or to discuss your requirements with someone knowledgeable, call the Fixfast customer service team on **0800 304 7616**.
- + Full literature is available for the Fixfast range, or visit **www.fixfast.com**
- + Other performance data may be available on request. For more unusual applications, tests can be carried out in our in-house technical centre to provide the necessary data.
- + Site visits are also possible, particularly for pull-out performance into concrete, masonry or other variable substrates. Please ask for a Site Visit Request form if you think this service would be useful.
- + CAD files of fasteners are available on request for inclusion in drawings.

The information contained in this document is based on the specification of the Trimoterm FTV system and Fixfast's product data. It is provided in good faith but Fixfast cannot be held liable for any errors. Performance is dependent on adherence to the conditions and instructions contained in Fixfast's Technical Data Sheets for the products shown. Performance values should be approved by a qualified engineer, and Fixfast recommend preliminary tests for any application where variation is possible in the materials or substrates involved.



Merlin House
Seven Mile Lane
Borough Green
Sevenoaks
Kent
TN15 8QY

Enquiries

0800 304 7616

International

+44 (0) 1732 882387

Fax

0845 450 7486

Email

info@fixfast.com



Certificate number 10905
ISO 9001, ISO 14001
OHSAS 18001