

Maximum reliability. Minimum fuss.



Selector Guide

TATA Trimapanel

Tata

Fastener Systems and Sealing Products

Contents

Products for Specific Applications	3
Accessories	8
Technical Data	9
Technical Notes	13

Introduction to Fixfast

Fixfast design, manufacture and supply specialist building fasteners and components for the walls and roofs of industrial, commercial and larger residential buildings. We collaborate with major building envelope system manufacturers, such as TATA, to provide them and their clients with engineered fastening and sealing solutions.

This selector guide has been created as an easy to use reference document, identifying the most common fasteners and components for use when installing the TATA Trimapanel panel system.

Full technical data for these products along with application uses can be found on our website at www.fixfast.com by searching for the product.

Our specification team can assist in providing NBS specifications for specific projects, whilst our customer services team can answer questions regarding the usage or ordering of Fixfast products.

If you have any queries regarding our products or services then please do contact our customer services team on 0800 304 7616 or by emailing sales@fixfast.com.

Fixing TATA Trimapanel to steel 1.2 - 3.0mm

Primary fixing to cold rolled steel.

Use DrillFast® fasteners.

8mm Hex Head, use Fixfast GreenDrive for stainless fasteners and Fixfast YellowDrive for carbon fasteners.



Panel Thickness	Fastener Code Stainless	Fastener Code Carbon
70mm	DF3-SS-HT-A15-5.5 x 85	DF3-HT-A15-5.5 x 85
90mm	DF3-SS-HT-A15-5.5 x 110	DF3-HT-A15-5.5 x 105
120mm	DF3-SS-HT-A15-5.5 x 130	DF3-HT-A15-5.5 x 130

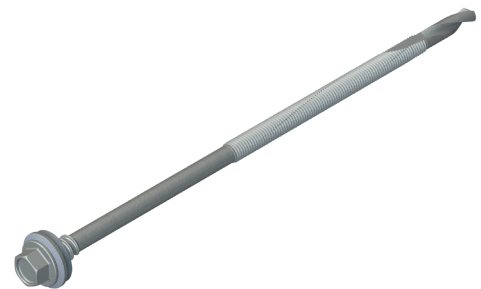
For fixing panels back to timber, please contact Fixfast Customer Service team on **0800 304 7616**

Fixing TATA Trimapanel to steel 4.0 - 12.0mm

Primary fixing to hot rolled steel.

Use DrillFast® fasteners.

8mm Hex Head, use Fixfast GreenDrive for stainless fasteners and Fixfast YellowDrive for carbon fasteners.



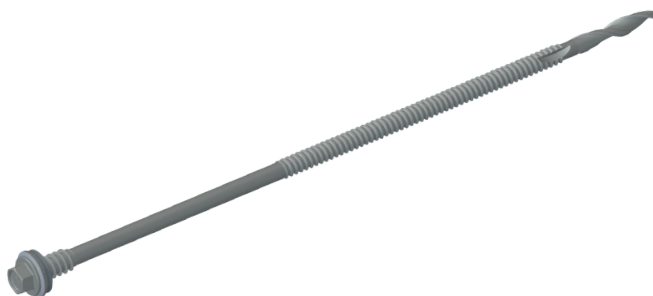
Panel Thickness	Fastener Code Stainless	Fastener Code Carbon
70mm	DF12-SS-HT-A15-5.5 x 115	DF12-HT-A15-5.5 x 105
90mm	DF12-SS-HT-A15-5.5 x 150	DF12-HT-A15-5.5 x 125
120mm	DF12-SS-HT-A15-5.5 x 150	DF12-HT-A15-5.5 x 145

Fixing TATA Trimapanel to steel 8.0 - 25.0mm

Primary fixing to hot rolled rails.

Use DrillFast® fasteners.

8mm Hex Head, use Fixfast GreenDrive.



Panel Thickness	Fastener Code
70mm	Please enquire for details
90mm	DF25-SSA4-HT-A15-6.3 x 225
120mm	DF25-SSA4-HT-A15-6.3 x 225

For fixing panels back to timber, please contact Fixfast Customer Service team on **0800 304 7616**

Fixing TATA Trimapanel top hat fixing

Fixing Top-hat.

Use DrillFast® fasteners.

8mm Hex Head, use Fixfast GreenDrive for stainless fasteners and Fixfast YellowDrive for carbon fasteners.



Fastener Code - stainless	Fastener Code - carbon
DF3-SS-A15-5.5 x 25	DF3-A15-5.5 x 25

Fixing TATA Trimapanel base support

Base support clip fastener into cold rolled rails.

Use DrillFast® fasteners.

8mm Hex Head, use Fixfast GreenDrive for stainless fasteners and Fixfast YellowDrive for carbon fasteners.



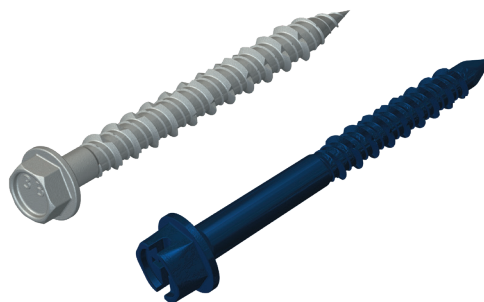
Fastener Code - stainless	Fastener Code - carbon
DF3-SS-A15-5.5 x 25	DF3-A15-5.5 x 25

Fixing TATA Trimapanel base support

Base support channel fastener into concrete floor slab.

Use TuffFast fasteners.

8mm Hex Head, use Fixfast GreenDrive for stainless fasteners and Fixfast YellowDrive for carbon fasteners.



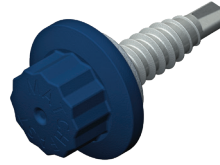
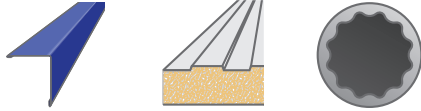
Fastener Code - stainless	Fastener Code - carbon
HTF-SS-A15-6.3 x 45	HTF-A15-6.3 x 45

TATA Trimapanel flashing fixing

External stitching screw for metal flashing to panel.

Use MatchFast® Stainless stitching fasteners.

11mm bi-hex head, use Fixfast MF1165.



Fastener Code - stainless

MF2-SS-A15-6.3 x 25 + colour

Fastener Code - carbon

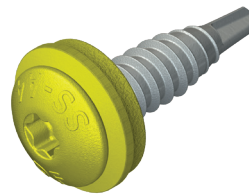
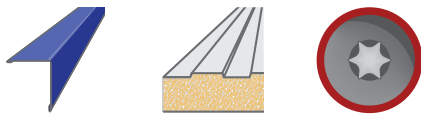
MF2-A15-6.3 x 25 + colour

TATA Trimapanel flashing fixing

External stitching screw for metal flashing to panel.

Use DrillFast® Lacquered stitching fasteners.

Pan TX25 head, use Fixfast RedDrive.



Fastener Code - stainless

DF2-SSA4-PL-S15-6.3 x 25 + colour

Fastener Code - carbon

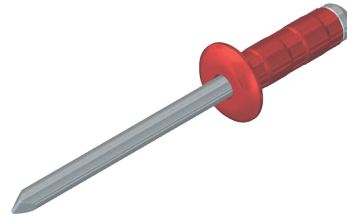
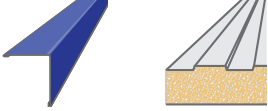
DF3-DPL-A15-5.5 x 25 + colour

Flashing/trim to panel skin

External rivet for metal flashing to panel.

Use Stainless steel lacquered rivet.

Use powered riveting tool.



Fastener Code

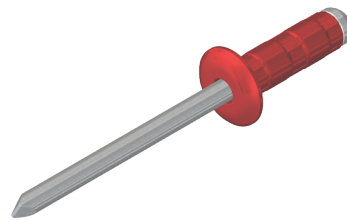
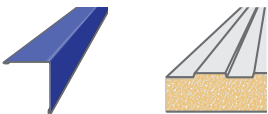
R-SS-LAC-4.8 x 15 + colour

Flashing/trim to panel skin

External rivet for metal flashing to panel.

Use lacquered aluminium rivet.

Use powered riveting tool.



Fastener Code

R-AC-LAC-4.8 x 15 + colour

TATA Trimapanel panel sealants

Sealant for panel ends at eaves, bases and corners.

Use A Class butyl strip sealant.



Sealant Code	Thickness x Width (mm)	Roll Length (m)
A-6 dia x 8	6 dia bead	8

TATA Trimapanel joint sealants

Sealant for internal flashing joints.

Use A Class butyl strip sealant.



Sealant Code	Thickness x Width (mm)	Roll Length (m)
A-3 x 50 x 15	3 x 50	15

TATA Trimapanel flashing sealants

Sealant for external flashing joints.

Use A Class butyl strip sealant.



Sealant Code	Thickness x Width (mm)	Roll Length (m)
A-4 dia x 12	4 dia bead	12

Fire resistant construction foam

Fire rated foam insulation.

Use Firefoam B1.



Sealant Code	Cartridge Size (ml)	Fitting	Box Quantity
FIREFOAM-B1-GUN	750	Screwtop	12
FIREFOAM-B1-HAND	750	Manual	12

TATA Trimapanel cartridge sealants

Sealant for panel joint gap at corners and vertical junctions.

Use Seelex BR gun grade solvent release bedding sealant.



Sealant Code	Cartridge Size (ml)	Cartridges / Carton	Colour
SEELEX-BR	380	24	Grey or White

GreenDrive

One-piece drive socket for DrillFast® stainless fasteners, supports the head for easy accurate driving.

Product Code: GREENDRIVE



RedDrive

One-piece drive socket for DrillFast® low profile fasteners, supports the head for easy accurate driving.

Product Code: REDDRIVE



MF1165

One-piece recess drive socket for MatchFast® head fasteners, supports the head for easy accurate driving.

Product Code: MF1165



Many other tools and accessories are available.

Please see the current Fixfast Product Directory, go to www.fixfast.com, or ask the Fixfast customer service team.

Technical Data

DF3-SS-HT-5.5 Range

Material	1.4301 stainless steel (304M), with steel case hardened welded point
Coating	Organic
Drilling Capacity	1.2mm - 3.0mm steel
Pull-out Values (axial load resistance)	
Substrate	Characteristic value
1.2mm Steel	1.30kN
2.0mm Steel	2.62kN
3.0mm Steel	4.76kN
Softwood 35mm Embedment	3.57kN

DF3-HT-5.5 Range

Material	Steel SAE1022 case hardened
Coating	Organic
Drilling Capacity	1.2mm - 3.0mm steel
Pull-out Values (axial load resistance)	
Substrate	Characteristic value
1.2mm Steel	1.52kN
2.0mm Steel	3.01kN
3.0mm Steel	5.42kN
Softwood 35mm Embedment	3.57kN

DF12-SS-HT-5.5 Range

Material	1.4301 Stainless steel (304M), with steel case hardened welded point
Coating	Organic
Drilling Capacity	4.0mm - 12.0mm steel
Pull-out Values (axial load resistance)	
Substrate	Characteristic value
4.0mm Steel	2.80kN
6.0mm Steel	3.09kN
8.0mm Steel	6.89kN
12.0mm Steel	6.89kN

Technical Data

DF12-HT-5.5 Range	
Material	SAE1022 steel case hardened
Coating	Organic
Drilling Capacity	4.0mm - 12.0mm steel
Pull-out Values (axial load resistance)	
Substrate	Characteristic value
4.0mm Steel	5.44kN
6.0mm Steel	12.75kN
8.0mm Steel	13.92kN
12.0mm Steel	13.92kN

DF25-SSA4-HT-6.3 Range	
Material	1.4401 stainless steel (316M), with steel case hardened welded point
Coating	Organic
Drilling Capacity	8.0mm - 25.0mm steel
Pull-out Values (axial load resistance)	
Substrate	Characteristic value
8.0mm Steel	10.82kN
12.0mm Steel	10.82kN
25.0mm Steel	10.82kN

HTF-SS-6.3 x 45	
Material	A2 300 series stainless steel, steel case hardened welded point
Coating	Organic
Pull-out Values (axial load resistance)	
Substrate	Characteristic value
TBC	Please call Fixfast for details

Technical Data

DF2-SSA4-PL-6.3 x 25	
Material	1.4401 stainless steel (316M), with steel case hardened welded point
Coating	Organic
Drilling Capacity	2 sheets 1.0mm thick
Pull-out Values (axial load resistance)	
Substrate	Characteristic value
0.5mm Steel	0.60 kN

DF3-DPL-5.5 x 25	
Material	SAE1022 steel case hardened
Coating	Organic
Drilling Capacity	4.0mm - 12.0mm steel
Pull-out Values (axial load resistance)	
Substrate	Characteristic value
0.5mm Steel	0.68 kN
1.2mm Steel	1.52 kN
2.0mm Steel	3.01 kN
3.0mm Steel	5.42 kN

MF2-SS-6.3 x 25	
Material	1.4301 stainless steel (304M), with carbon steel case hardened welded point and UV-stabilised nylon moulded head
Coating	Organic
Drilling Capacity	2 sheets 1.0mm thick
Pull-out Values (axial load resistance)	
Substrate	Characteristic value
0.5mm Steel	0.60 kN

Technical Data

MF2-6.3 x 25	
Material	Steel SAE1022 case hardened welded point and UV-stabilised nylon moulded head
Coating	Organic
Drilling Capacity	2 sheets 1.0mm thick
Pull-out Values (axial load resistance)	
Fastener	Characteristic value
MF2-6.3 x 25	0.60 kN

R-SS-LAC-4.8 x 15	
Nominal rivet length (mm)	17.3
Body diameter (mm)	4.8
Drill hole diameter (mm)	4.9
Head diameter (mm)	9.8
Mandrel diameter (mm)	3.2
Grip range (mm)	6.0 - 8.5
Material	A2 304 stainless steel

Fastener Data

- + All dimensions are subject to manufacturing tolerances.
- + Performance values are tested and calculated according to Eurocode procedures and appropriate safety factors should be applied in any calculations using these values.

Fastener Selection

- + Recommended fastener lengths are calculated using standard tolerances for the fasteners and the combination of materials in the build-up.
- + If there is distortion in the supporting construction, or other non-standard application detail, longer fasteners may be necessary than those shown. Always check the actual circumstances before deciding on a particular length.

Further Assistance

- + For any enquiry, or to discuss your requirements with someone knowledgeable, call the Fixfast customer service team on **0800 304 7616**.
- + Full literature is available for the Fixfast range, or visit **www.fixfast.com**
- + Other performance data may be available on request. For more unusual applications, tests can be carried out in our in-house technical centre to provide the necessary data.
- + Site visits are also possible, particularly for pull-out performance into concrete, masonry or other variable substrates. Please ask for a Site Visit Request form if you think this service would be useful.
- + CAD files of fasteners are available on request for inclusion in drawings.

The information contained in this document is based on the specification of the TATA Trimapanel system and Fixfast's product data. It is provided in good faith but Fixfast cannot be held liable for any errors. Performance is dependent on adherence to the conditions and instructions contained in Fixfast's Technical Data Sheets for the products shown. Performance values should be approved by a qualified engineer, and Fixfast recommend preliminary tests for any application where variation is possible in the materials or substrates involved.



Merlin House
Seven Mile Lane
Borough Green
Sevenoaks
Kent
TN15 8QY

Enquiries

0800 304 7616

International

+44 (0) 1732 882387

Fax

0845 450 7486

Email

info@fixfast.com



Certificate number 10905
ISO 9001, ISO 14001
OHSAS 18001