

Maximum reliability. Minimum fuss.



Selector Guide

EUROBOND Rainspan

Eurobond

Fastener Systems and Sealing Products

Contents

Products for Specific Applications	3 - 6
Accessories	7
Technical Data	8 - 10
Technical Notes	11

Introduction to Fixfast

Fixfast design, manufacture and supply specialist building fasteners and components for the walls and roofs of industrial, commercial and larger residential buildings. We collaborate with major building envelope system manufacturers, such as Eurobond, to provide them and their clients with engineered fastening and sealing solutions.

This selector guide has been created as an easy to use reference document, identifying the most common fasteners and components for use when installing the Eurobond Rainspan panel system.

Full technical data for these products along with application uses can be found on our website at www.fixfast.com by searching for the product.

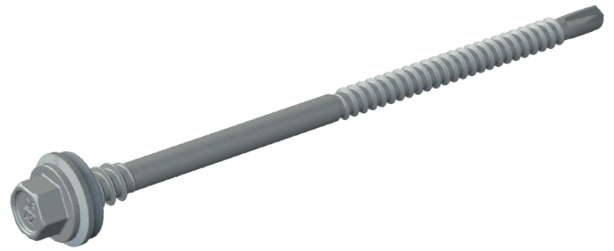
Our specification team can assist in providing NBS specifications for specific projects and our customer services team can answer questions regarding the usage or ordering of Fixfast products.

If you have any queries regarding our products or services then please do contact our customer services team on 0800 304 7616 or by emailing sales@fixfast.com.

Fixing Rainspan to steel 1.2 - 3.0mm

Use DrillFast® Stainless DF3-SS-HT fasteners.

8mm hex head, use Fixfast GreenDrive.



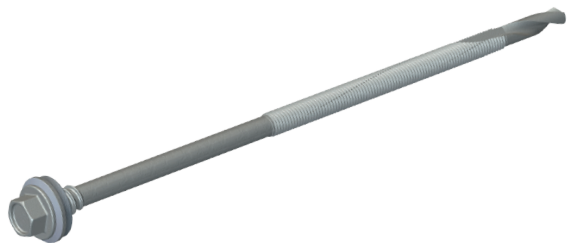
Panel Thickness	Fastener Code
100mm	DF3-SS-HT-A15-5.5 x 130
125mm	DF3-SS-HT-A15-5.5 x 150
150mm	DF3-SS-HT-A15-5.5 x 180
175mm	DF3-SS-HT-A15-5.5 x 225
200mm	DF3-SS-HT-A15-5.5 x 225
240mm	DF3-SS-HT-A15-5.5 x 275

For fixing panels to timber, please contact Fixfast Customer Service team on **0800 304 7616**

Fixing Rainspan to steel 4.0 - 12.0mm

Use DrillFast® Stainless DF12-SS-HT fasteners.

8mm hex head, use Fixfast GreenDrive.



Panel Thickness	Fastener Code
100mm	DF12-SS-HT-A15-5.5 x 150
125mm	DF12-SS-HT-A15-5.5 x 200
150mm	DF12-SS-HT-A15-5.5 x 200
175mm	DF12-SS-HT-A15-5.5 x 250
200mm	DF12-SS-HT-A15-5.5 x 250
240mm	DF12-SS-HT-A15-5.5 x 300

Fixing Rainspan to steel 8.0 - 25.0mm

Use DrillFast® Stainless DF25-SSA4-HT fasteners.

8mm Hex head, use Fixfast GreenDrive.

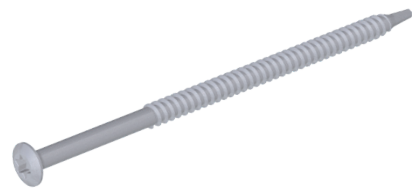
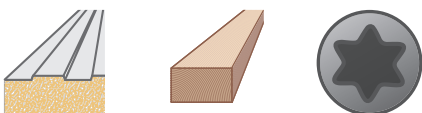


Panel Thickness	Fastener Code
100mm	DF25-SSA4-HT-A15-6.3 x 225
125mm	DF25-SSA4-HT-A15-6.3 x 225
150mm	DF25-SSA4-HT-A15-6.3 x 225
175mm	DF25-SSA4-HT-A15-6.3 x 275
200mm	DF25-SSA4-HT-A15-6.3 x 275
240mm	DF25-SSA4-HT-A15-6.3 x 325

Fixing timber to Rainspan panel

Use SureFast Stainless SF-RS-SSA4-4.8 fasteners.

Pan TX25 head: use TX25.

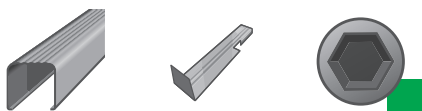


Fastener Code
SF-RS-SSA4-4.8 x 80
SF-RS-SSA4-4.8 x 100

Fixing helping hand brackets and carrier rails to Rainspan panel

Use DrillFast® Stainless stitching fasteners with bonded washer.

8mm Hex head, use Fixfast GreenDrive.



Fastener Code

DF2-SS-LS-A15-6.3 x 25

To be advised by Eurobond Technical

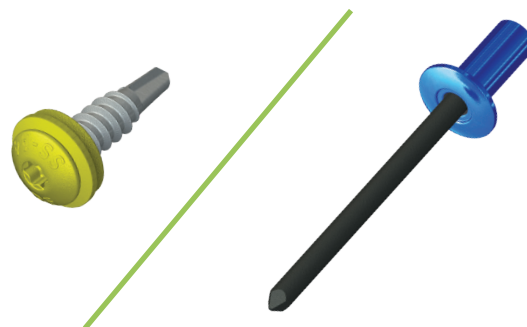
Fixing flashings and trims to Rainspan panel

Use DrillFast® Lacquered stitching fasteners with bonded washer.

Pan TX25 head, use Fixfast RedDrive.

OR

Lacquered stainless steel rivet: use powered riveting tool.



Code

DF2-SSA4-PL-S15-6.3 x 25 + colour

R-SS-LAC-4.8 x 15 + colour

Fixing angle to concrete

Use FAZ stainless steel expanding anchor.

13mm Hex nut: use 13mm socket.



Fastener Code

FAZ 8/10-A4

Fixing Omega section to spreader washer

Use DrillFast® Stainless.

8mm Hex head, use Fixfast GreenDrive.



Fastener Code

DF3-SS-A15-5.5 x 25

GreenDrive

One-piece drive socket for 8mm hex-head stainless steel fasteners

Product Code: GREENDRIVE



RedDrive

One-piece drive socket for DrillFast® low profile fasteners, supports the head for easy accurate driving.

Product Code: REDDRIVE



TX25 Drivebar

One-piece drivebar for SureFast fasteners.

Product Code: 150-TX25, 200-TX25, 300-TX25



Socket system

Socket for 13mm hex nut, 9.5mm drive

Product Code: 9.5-SOCKET-13

Socket for 13mm hex nut, 12.5mm drive

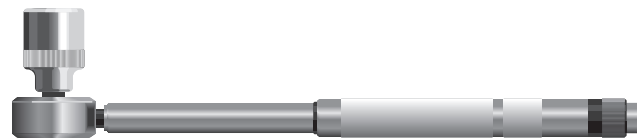
Product Code: 12.5-SOCKET-13

Torque wrench for 9.5mm drive

Product Code: WRENCH-9.5

Torque wrench for 12.5mm drive

Product Code: WRENCH-12.5



Many other tools and accessories are available.

Please see the current Fixfast Product Directory, go to www.fixfast.com, or ask the Fixfast customer service team.

Technical Data

DF3-SS-HT-5.5 Range	
Material	1.4301 stainless steel (304M), with steel case hardened welded point
Coating	Organic
Drilling Capacity	1.2mm - 3.0mm steel
Pull-out Values (axial load resistance)	
Substrate	Characteristic value
1.2mm Steel	1.30kN
2.0mm Steel	2.62kN
3.0mm Steel	4.76kN
Softwood 35mm Embedment	3.57kN

DF3-SS-5.5 Range	
Material	1.4301 stainless steel (304M), with steel case hardened welded point
Coating	Organic
Drilling Capacity	1.2mm - 3.0mm steel
Pull-out Values (axial load resistance)	
Substrate	Characteristic value
1.2mm Steel	1.30kN
2.0mm Steel	2.62kN
3.0mm Steel	4.76kN
Softwood 35mm Embedment	3.57kN

DF2-SS-LS-6.3 x 25	
Material	1.4301 stainless steel (304M) with carbon steel hardened welded point
Coating	Organic
Drilling Capacity	2 sheets 1.0mm thickness
Pull-out Values (axial load resistance)	
Substrate	Characteristic value
0.5mm Steel	0.60kN

Technical Data

DF12-SS-HT-5.5 Range	
Material	1.4301 Stainless steel (304M), with carbon steel case hardened welded point
Coating	Organic
Drilling Capacity	4.0mm - 12.0mm steel
Pull-out Values (axial load resistance)	
Substrate	Characteristic value
4.0mm Steel	2.80kN
6.0mm Steel	3.09kN
8.0mm Steel	6.89kN
12.0mm steel	6.89kN

DF25-SSA4-HT-6.3 Range	
Material	1.4401 stainless steel (316M) with carbon steel hardened welded point
Coating	Organic
Drilling Capacity	8.0 - 25.0mm steel
Pull-out Values (axial load resistance)	
Substrate	Characteristic value
8.0mm steel	10.82 kN
12.0mm steel	10.82 kN
25.0mm steel	10.82 kN

Fastener Data

SF-RS-SSA4-4.8

Material	1.4401 stainless steel (316M) with carbon steel hardened welded point
Coating	Organic
Drilling Capacity	2 sheets 1.0mm thickness
Pull-out Values (axial load resistance)	
Substrate	Characteristic value
0.7mm Steel	1.08 kN
0.9mm Steel	1.45 kN
1.2mm Steel	2.24 kN
18mm Plywood	1.77 kN
18mm OSB	1.37 kN
Softwood 35mm embedment	3.89 kN

FAZ - 8/10 - A4

Nominal length (mm)	74
Maximum build-up (mm)	10
Drill hole diameter (mm)	8
Drill hole depth (mm)	75
Washer diameter (mm)	16
Performance values	Dependent on substrate and application, please consult Fixfast for details
Material	A4 316 stainless steel
Standard setting torque (Nm)	20

R-SS-LAC-4.8 x 15

Nominal rivet length (mm)	17.3
Body diameter (mm)	4.8
Drill hole diameter (mm)	4.9
Head diameter (mm)	9.8
Mandrel diameter (mm)	3.2
Grip range (mm)	6.0 - 8.5
Material	A2 304 stainless steel

Fastener Data

- + All dimensions are subject to manufacturing tolerances.
- + Performance values are tested and calculated according to Eurocode procedures and appropriate safety factors should be applied in any calculations using these values.

Fastener Selection

- + Recommended fastener lengths are calculated using standard tolerances for the fasteners and the combination of materials in the build-up.
- + If there is distortion in the supporting construction, or other non-standard application detail, longer fasteners may be necessary than those shown. Always check the actual circumstances before deciding on a particular length.

Further Assistance

- + For any enquiry, or to discuss your requirements with someone knowledgeable, call the Fixfast customer service team on **0800 304 7616**.
- + Full literature is available for the Fixfast range, or visit **www.fixfast.com**
- + Other performance data may be available on request. For more unusual applications, tests can be carried out in our in-house technical centre to provide the necessary data.
- + Site visits are also possible, particularly for pull-out performance into concrete, masonry or other variable substrates. Please ask for a Site Visit Request form if you think this service would be useful.
- + CAD files of fasteners are available on request for inclusion in drawings.

The information contained in this document is based on the specification of the Eurobond Rainspan system and Fixfast's product data. It is provided in good faith but Fixfast cannot be held liable for any errors. Performance is dependent on adherence to the conditions and instructions contained in Fixfast's Technical Data Sheets for the products shown. Performance values should be approved by a qualified engineer, and Fixfast recommend preliminary tests for any application where variation is possible in the materials or substrates involved.



Merlin House
Seven Mile Lane
Borough Green
Sevenoaks
Kent
TN15 8QY

Enquiries

0800 304 7616

International

+44 (0) 1732 882387

Fax

0845 450 7486

Email

info@fixfast.com



Certificate number 10905
ISO 9001, ISO 14001
OHSAS 18001