





### PRO TITAN TAPE

A highly flexible, double sided butyl tape. Pro Titan Tape is designed with a layer of release film on both sides to assist during installation. This multipurpose tape prevents water, water vapor, air and gas when used in conjunction with gas barriers, vapor control layers and damp proof membranes. The tapes flexibility enables installation on irregular surfaces accurately with little to no waste. Pro Titan Tape can adhere to all our gas barriers and an extensive variety of substrates.

**DMS 439**

**100mm x 15m**



### DETAILING STRIP

Detailing Strip is a superior 300mm wide, self-adhesive gas membrane designed specifically to aid detailing and sealing around pipe penetrations and internal and external corners. Detailing Strip can also be used for repairing tears and other damage to ground gas membranes.

**DMS 413**

**300mm x 20m**



### GAS TAPE 50

Gas Tape 50 is a specialist butyl double sided sealing tape. This strong and durable tape is ideal for sealing between overlapping sheets of gas membrane.

**DMS 411**

**50mm x 10m**



### GAS TAPE 150

Gas Over Tape 150 is a durable butyl single sided tape. Gas Over Tape is designed with an aluminium foil backing. This unique foil provides a secondary seal to gas membrane joints and for detailing around service penetrations.

**DMS 412**

**150mm x 30m**



### PRO TITAN EXTERNAL TAPE

A 300mm wide by 20m long single-sided self-adhesive tape. Used as an under-tape for forming lap joints with Pro Titan Bond. Note that wherever possible, plastic membranes should be welded when used as primary protection against ingress of Hydrocarbons and VOC's, in accordance with CIRIA C748, Guidance on the use of plastic membranes as VOC barriers.

**DMS 440**

**300mm x 20m**



## ADJUSTABLE PERISCOPE VENT RECTANGULAR

Ground Gas Membrane's Adjustable Periscope Vent is designed to provide a clear airflow passage to a void beneath block and beam and timber floors. The adjustable periscope vent allows for adjustment between brick courses. 9 x 3 inches airbrick attached to vent equates ventilation space of approx 6,000 mm

**DMS 432**



## RECTANGULAR VENT UNIT

Rectangular Vent is a strong, robust vent suitable for use with gas ventilation systems. This multipurpose vent allows gas and unwanted odours to be released into the external atmosphere.

**DMS 421**



## VENT MAT TEE CONNECTOR

Vent Mat Tee Connector, also known as a T Fitting, enables connection of Void Vent 25 mat to ventilation ducting. This Mat Tee Connector has a characteristic 'T' shape with outputs at 90 degree angles.

**DMS 430**



## VENT MAT CONNECTOR

The Vent Mat Connector is specifically designed to be used to connect the Pro Void Vent mat with the Adjustable Periscope Vent.

**DMS 428**



## GAS VENT MAT CONNECTOR

The Gas Vent Mat Connector is specifically designed to be used to connect the Pro Void Vent mat with the 100mm circular outlet enabling connection via 100mm solid pipe to vent box, vent bollard and/or vent gully.

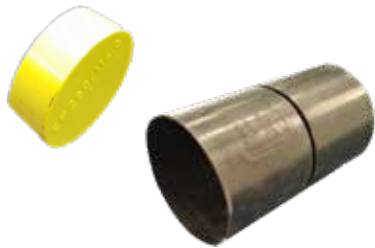
**DMS 431**



### SOLID PIPE CONNECTOR

Solid Pipe Connector is a strong, robust pipe, with a ribbed outer layer. The ribbed outer layer highly increases the Solid Pipes strength, enabling the pipe to withstand larger forces.

DMS 436

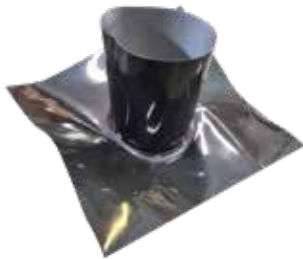


### END CAP / PIPE COUPLING

The End Cap can be fitted to the end of a Solid 100mm Pipe, the 100mm Slotted Pipe and also the 100mm Vent Mat Tee Connector. The End Cap creates a dead end for the flow of ground gas. The Pipe Coupling enables simple connection of varying lengths of 100mm pipe.

DMS 426 End Cap

DMS 425 Pipe Coupling



### 110MM PIPE SLEEVE

The pre-formed Pipe Sleeve 110mm is commonly known as a 'top hat' and are designed to offer a professional gas resistant solution for sealing ground gas membranes around service penetrations. Images show M1 membrane (1) and Tital VOC (2) which are suitable to varying ground gas requirements. [Available in any size as we make these to order with a 3-5 day turnaround].

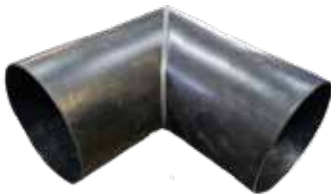
DMS 444



### SLOTTED CARRIER PIPE

The 100mm Slotted Carrier Pipe has a 25mm slot cut along its length to accommodate the Void Vent Mat. The Void Vent Mat can easily be fitted into the slot which allows the Void Vent Mat to cover the entire footprint of the structure.

DMS 427



### 90 DEGREE BEND

The 90-degree bend enables two sections of 100mm solid pipe where changes of direction are required. This 90-degree bend is suitable to fit on both internal and external corner sections.

DMS 424



### PRO INLET PIPE SECTION T PIECE

Pro Inlet pipe section T-Piece is a robust pipe connector. Compatible with all Pro Void Vent 25 pipes. This T-piece is useful if you wish to funnel two points of collection to one point.

DMS 458



### MITIGATION FAN

All RadonAway® fans are specifically designed for radon mitigation. RPi Series Fans provide superb performance, run ultra-quiet and are attractive. They are ideal for most sub-slab radon mitigation systems.

DMS 700 145i

DMS 701 265i



### RADON SUMP

A Radon Sump is a rotationally moulded plastic unit designed to act as a collection point for Radon gas prior to it being ventilated away when connected to a mitigation fan.

DMS 045



### AIR BRICK

Air brick for venting harmful ground gases from a property. The air brick replaces an external masonry brick. It incorporates a front mounted louvered grill to permit airflow while blocking out wind driven rain and prohibiting large insects from gaining access.

DMS 457



### CIRCULAR VENT ALLOY GRILL

The Circular Vent - Alloy Grill is an alternative to the Rectangular Vent. A strong, robust vent suitable for use with gas ventilation systems. This multi-purpose vent allows gas and unwanted odours to be released into the external atmosphere.

DMS 422



### VENT BOLLARD

Vent Bollard offers an alternative method of ground gas venting to the Vent Box/Circular Vent Gully. The Vent Bollard provides an efficient and economical method for venting ground gases from Vent Mat Systems. For projects where alternative venting methods are required or if there is a higher level of free air flow required.

DMS 435



Delta House, Merlin Way,  
North Weald, Epping,  
Essex CM16 6HR  
Tel: +44 (0)1992 523 523  
info@deltamembranes.com  
www.deltamembranes.com