



landscapeforms®

artform
urban furniture

CHIPMAN







Chipman for Terrace Life.

There is poetry in the curves and hollows, shadows and surfaces of mountain peaks, says Landscape Architect Robert Chipman -- and his stunning sculptural chair and table collection channels the magic. This beautiful expression of form and feeling inspires the mind and transforms the high-profile social spaces for which it is created. The Chipman Collection is a new modern classic with a fresh edge that takes a deserved place in the best outdoor spaces of the leading urban architecture of our day.





The Chipman Collection includes a cast aluminum chair, with and without arms, and a round table in dining and lounge heights. In its unadorned invention and clarity Chipman has international expression and universal appeal. Delicate in scale and proportion, it is heavy enough for rooftop terraces but light enough to move around. The one-piece cast chair seat and back has seamlessly welded-on legs and arms; the table has a flat aluminum top encircled by a tapered cast rim and an inverted cone-shaped stem with feet; both raise detail and finish to high art.









landscapeforms.com

Visit our website for product details, color charts, technical sheets and sales office locations. Download JPG images, brochure PDF, CAD details and CSI specifications.

Chipman Design: Robert Chipman

Chipman is manufactured in the USA

Location Photography: Grand Rapids, Michigan

Specifications are subject to change without notice.

Landscape Forms® supports the Landscape

Architecture Foundation at the Second Century level.

© 2013 Landscape Forms®, Inc. Printed in USA

431 Lawndale Avenue,

Kalamazoo, MI 49048

800.521.2546

269.381.3455 fax

DESIGN. CULTURE. CRAFT.



landscapeforms®



landscapeforms®

CHIPMAN

STOOL AND STANDING HEIGHT TABLE



The Chipman stool and standing height table showcase landscape architect Robert Chipman's deft hand at sculptural form. Like the IDEA award winning Chipman chair and companion dining and coffee tables, they are part of the company's Terrace Life group of lifestyle furnishings ideal for private and protected rooftop, terrace and café settings. The cast aluminum stool echoes the organic curves and hollows of the Chipman chair with a re-contoured seat that is more compact and narrower at the front, wider at the back to provide support for the relaxed postures people adopt when perching. A low back with a slight rise grows organically out of the legs. Stools nest for storage. The standing height table with cone-shaped stem is offered in 31" and 36" diameters, with a flat aluminum top.





landscapeforms.com

Visit our website for product details, color charts, technical sheets and sales office locations.

Download JPG images, brochure PDF, CAD details and CSI specifications.

Chipman Design: Robert Chipman

Chipman is manufactured in the USA

Location Photography: Grand Rapids Art Museum

Specifications are subject to change without notice. Landscape Forms® supports the Landscape Architecture Foundation at the Second Century level.

© 2015 Landscape Forms®, Inc. Printed in USA

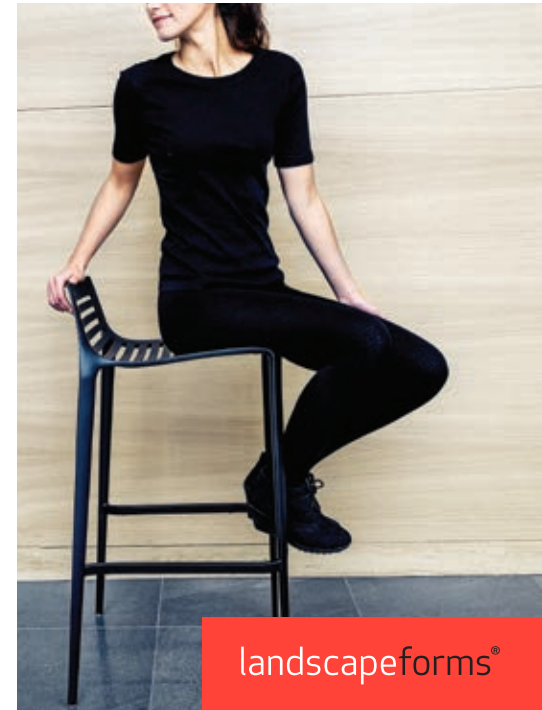
431 Lawndale Avenue

Kalamazoo, MI 49048

800.521.2546

269.381.3455 fax

DESIGN. CULTURE. CRAFT.



landscapeforms®