



## Building + Landscape

SOPHISTICATED, DOMESTIC DRAINAGE  
AND LANDSCAPING SYSTEMS





## BUILDING + LANDSCAPE

SOPHISTICATED, DOMESTIC DRAINAGE AND LANDSCAPING SYSTEMS



## INTRODUCTION TO THE ACO BUILDING + LANDSCAPE RANGE

Tailored to the demands of domestic applications, Building + Landscape products have finish options that both complement and enhance the aesthetic qualities of any domestic property.

The modern and functional range provides homeowners with the most complete and stylish surface water management offering for driveways, patios, building thresholds and landscaped areas.

The range has been manufactured to the highest quality standards, ensuring long life and service within and around your domestic landscape.



## PATIOS + PATHS

Enhance your patio with ACO's elegant and modern range of 'Complete the Look' gratings.

The product range provides homeowners with a drainage solution that perfectly complements any style of patio project from slate to natural stone.

Designed to be used with ACO's best-selling domestic drainage channels ACO HexDrain® and ACO RainDrain®, a choice of styles ranging from contemporary stainless steel to discreet slot options are available to provide the perfect finish.



## DOMESTIC DRIVEWAYS

ACO's range of stylish and modern drainage solutions can enhance the landscape of any domestic driveway.

A range of products are available to complement your garage threshold and driveway entrance, helping to create an attractive and functional space.

Meeting the highest performance standards, ACO's range of driveway products can withstand the rigours of everyday use.



## BUILDING THRESHOLDS

ACO's range of building threshold products, help to create attractive threshold drainage around the entrances of the home.

ACO threshold drainage removes water ponding at entrances, whilst also providing attractive and functional detail in the architecture of the home.

A variety of finishing options, ranging from slimline stainless steel to anthracite carpet, are available to enhance your threshold.



## LANDSCAPING

ACO's range of landscaping and attenuation systems help homeowners to create an attractive and sustainable water management solution.

ACO GravelGuard and GroundGuard are ideal for use in domestic driveways and paths, where a natural grass or decorative aggregate finish are required to complement the landscape, whilst also reducing the risk of potholes, rutting or grass damage.




ACO StormBrixx SD is an easy to handle and quick to install domestic soakaway. Its high void ratio reduces the cost associated with traditional soakaways and enables compliance with current building regulations concerning rainwater runoff from drives.



## CONTENTS

|                                |    |
|--------------------------------|----|
| ACO HexDrain®                  | 17 |
| ACO RainDrain®                 | 19 |
| ACO Complete the Look          | 21 |
| ACO HexDrain® B 125            | 23 |
| ACO RainDrain® B 125           | 25 |
| ACO HexDrain® Pro              | 27 |
| ACO CivicDrain®                | 29 |
| ACO Eyeleds                    | 31 |
| ACO HexDrain® Brickslot        | 33 |
| ACO RainDrain® Brickslot B 125 | 35 |
| ACO Threshold Drain            | 37 |
| ACO Doorway Drain              | 39 |
| ACO StepDrain                  | 41 |
| ACO DrainMat                   | 43 |
| ACO GroundGuard                | 45 |
| ACO GravelGuard                | 47 |
| ACO BorderGuard                | 49 |
| ACO StormBrixx SD              | 51 |

### LOAD CLASSES AND TYPICAL USES

|   |   |
|---|---|
| <b>A 15</b><br>Pedestrian, cycleways, minimally trafficked area (light domestic vehicles only)    |  |
| <b>B 125</b><br>Pedestrian precincts, light vehicles, private car parks.                          |  |
| <b>C 250</b><br>Parking areas, service stations (cars) and slow-moving light commercial vehicles. |  |





## ACO HEXDRAIN®

### ACO HEXDRAIN® CHANNEL ASSEMBLIES

| PRODUCT CODE | DESCRIPTION                              | LENGTH (MM) | WIDTH OVERALL (MM) | DEPTH OVERALL (MM) | INVERT (MM) | WEIGHT (KG) |
|--------------|--|-------------|--------------------|--------------------|-------------|-------------|
| 19310        | Channel with black plastic grating 1m    | 1000        | 129                | 80                 | 75          | 1.4         |
| 19313        | Channel with galvanised steel grating 1m | 1000        | 129                | 80                 | 75          | 1.9         |

### ACO HEXDRAIN® ACCESSORIES

| PRODUCT CODE | DESCRIPTION  | LENGTH (MM) | WIDTH OVERALL (MM) | DEPTH OVERALL (MM) | INVERT (MM) | WEIGHT (KG) |
|--------------|--|-------------|--------------------|--------------------|-------------|-------------|
| 19559        | Corner unit with black plastic grating and vertical outlet               | 125         | 125                | 125                | 75          | 0.20        |
| 19558        | Black plastic sump unit  | 174         | Ø118               | 250                | -           | 0.30        |
| 319288       | Black plastic end cap  | 6           | 129                | 97                 | -           | 0.03        |
| 19287        | Accessory bag (incl. 2 x end caps, 110mm outlet connector and leafguard) | -           | -                  | -                  | -           | 0.20        |
| 27123        | Downpipe connector, HexDrain ø65mm                                       | 142         | 133                | 48                 | -           | 0.89        |
| 27120        | Downpipe connector, HexDrain ø68mm                                       | 142         | 133                | 48                 | -           | 0.92        |



Corner unit with black plastic grating and Ø110mm vertical outlet



Sump unit



Closing end cap



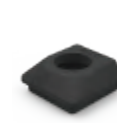
Ø110mm outlet connector



Leafguard



Downpipe connector  
□65mm

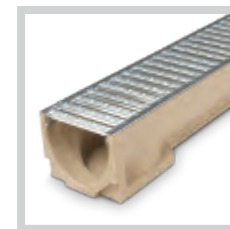


Downpipe connector  
ø68mm

*COMPLETE THE LOOK*

See the range of ACO Complete The Look gratings on page 21





## ACO RAINDRAIN®

### ACO RAINDRAIN® CHANNEL ASSEMBLY

| PRODUCT CODE | DESCRIPTION                              | LENGTH (MM) | WIDTH OVERALL (MM) | DEPTH OVERALL (MM) | INVERT (MM) | WEIGHT (KG) |
|--------------|--|-------------|--------------------|--------------------|-------------|-------------|
| 47000        | Channel with galvanised steel grating 1m | 1000        | 118                | 97                 | 87          | 7.38        |

### ACO RAINDRAIN® ACCESSORIES

| PRODUCT CODE | DESCRIPTION  | LENGTH (MM) | WIDTH OVERALL (MM) | DEPTH OVERALL (MM) | INVERT (MM) | WEIGHT (KG) |
|--------------|--|-------------|--------------------|--------------------|-------------|-------------|
| 38703        | Sump with galvanised steel grating c/w silt bucket | 500         | 118                | 303                | 275         | 11.30       |
| 319288       | Closing end cap                                    | 6           | 129                | 97                 | -           | 0.03        |
| 319289       | Outlet end cap Ø110mm                              | -           | 129                | 135                | -           | 0.07        |
| 01684        | Horizontal foul air-trap                           | 100         | Ø110               | -                  | -           | 0.20        |
| 0056         | 820 Drain union PVC-U Ø110mm                       | 100         | Ø110               | -                  | -           | 0.10        |
| 1367         | Lifting tool 5mm slots                             | -           | -                  | -                  | -           | 0.20        |



Sump unit with silt bucket



Closing end cap



Ø110mm outlet end cap



Ø110mm horizontal foul air-trap

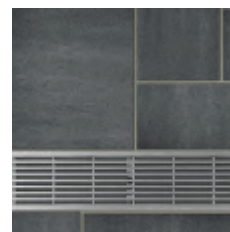


Ø110mm drain union

*COMPLETE THE LOOK*

See the range of ACO Complete The Look gratings on page 21





Wedge Wire Stainless Steel



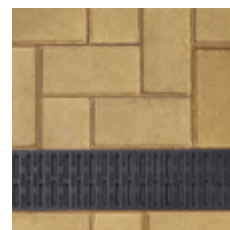
Polished Stainless Steel



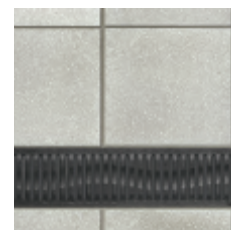
Anthracite



Galvanised Steel



Black Plastic



Antique Iron Heelguard™ ATec



Intercept Heelguard™ ATec



Mosaic Heelguard™ ATec

## ACO COMPLETE THE LOOK GRATINGS

### ACO COMPLETE THE LOOK GRATINGS

| PRODUCT CODE | DESCRIPTION                   | LOAD CLASS IF USED WITH HEXDRAIN* | LOAD CLASS IF USED WITH RAINDRAIN* | LENGTH (MM) | WIDTH OVERALL (MM) | DEPTH OVERALL (MM) | WEIGHT (KG) |
|--------------|-------------------------------|-----------------------------------|------------------------------------|-------------|--------------------|--------------------|-------------|
| 10323        | Wedge Wire Stainless Steel    | A 15                              | A 15                               | 1000        | 118                | 15                 | 3.0         |
| 310307       | Polished Stainless Steel      | A 15                              | A 15                               | 1000        | 118                | 15                 | 1.2         |
| 10305        | Anthracite                    | A 15                              | A 15                               | 1000        | 118                | 15                 | 1.3         |
| 38516        | Galvanised Steel              | A 15                              | A 15                               | 1000        | 118                | 15                 | 1.3         |
| 319250       | Black Plastic                 | A 15                              | A 15                               | 1000        | 118                | 15                 | 0.7         |
| 20400        | Antique Iron Heelguard™ ATec* | A 15                              | B 125                              | 500         | 118                | 15                 | 2.5         |
| 20402        | Intercept Heelguard™ ATec*    | A 15                              | B 125                              | 500         | 118                | 15                 | 2.5         |
| 20401        | Mosaic Heelguard™ ATec*       | A 15                              | B 125                              | 500         | 118                | 15                 | 2.9         |

*COMPLETE THE LOOK* Complete The Look gratings suitable for use with ACO HexDrain (page 17) and ACO RainDrain (page 19).

Note: B 125 load classification can be achieved when the 20400 Antique Iron grating, 20402 Intercept Heelguard™ ATec grating or the 20401 Mosaic Heelguard™ ATec grating is installed in conjunction with the ACO RainDrain® channel body. A 15 products are tested to a loading of 1.5 tonnes. No A 15 products are suitable for trafficking by heavy domestic vehicles such as 4x4s or SUVs.





## ACO HEXDRAIN® B 125

### ACO HEXDRAIN® B 125 CHANNEL ASSEMBLY

| PRODUCT CODE | DESCRIPTION                                  | LENGTH (MM) | WIDTH OVERALL (MM) | DEPTH OVERALL (MM) | INVERT (MM) | WEIGHT (KG) |
|--------------|--|-------------|--------------------|--------------------|-------------|-------------|
| 11019        | Channel with 2 composite Heelguard™ gratings | 1000        | 138                | 100                | 75          | 2.9         |

### ACO HEXDRAIN® B 125 DRAINAGE ACCESSORIES

| PRODUCT CODE | DESCRIPTION                                  | LENGTH (MM) | WIDTH OVERALL (MM) | DEPTH OVERALL (MM) | INVERT (MM) | WEIGHT (KG) |
|--------------|--|-------------|--------------------|--------------------|-------------|-------------|
| 11085        | Universal closing end cap                    | 11          | 138                | 105                | -           | 0.10        |
| 11285        | Ø110mm vertical outlet connector             | -           | Ø110               | 60                 | -           | 0.10        |
| 11191        | Ø110mm roddable foul air-trap                | 240         | Ø110               | 400                | -           | 1.20        |
| 11385        | Black plastic sump assembly c/w silt bucket* | -           | Ø160               | 510                | -           | 3.00        |

\* Sump assembly consists of a Ø160mm vertical outlet connector, silt bucket and sump body. Sump unit: Ø110mm outlet (upper) invert height to F.G.L = 362mm. Ø110mm or Ø160mm outlet (lower) invert height to F.G.L = 632mm.



Universal closing end cap



Ø110mm vertical outlet connector

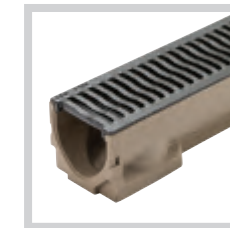


Ø110mm roddable foul air-trap



Sump unit with silt bucket





## ACO RAINDRAIN® B 125

### ACO RAINDRAIN® B 125 CHANNEL ASSEMBLY

| PRODUCT CODE | DESCRIPTION                                       | LENGTH (MM) | WIDTH OVERALL (MM) | DEPTH OVERALL (MM) | INVERT (MM) | WEIGHT (KG) |
|--------------|---|-------------|--------------------|--------------------|-------------|-------------|
| 47001        | Channel with cast iron Heelguard™ ATec grating 1m | 1000        | 118                | 97                 | 87          | 10.97       |

### ACO RAINDRAIN® B 125 ACCESSORIES

| PRODUCT CODE | DESCRIPTION   | LENGTH (MM) | WIDTH OVERALL (MM) | DEPTH OVERALL (MM) | INVERT (MM) | WEIGHT (KG) |
|--------------|---|-------------|--------------------|--------------------|-------------|-------------|
| 47006        | Sump with cast iron Heelguard™ ATec grating c/w silt bucket | 500         | 118                | 303                | 275         | 13.20       |
| 319288       | Closing end cap   | 6           | 129                | 97                 | -           | 0.03        |
| 319289       | Outlet end cap Ø110mm                                       | -           | 129                | 135                | -           | 0.07        |
| 01684        | Horizontal foul air-trap                                    | 100         | Ø110               | -                  | -           | 0.20        |
| 0056         | 820 Drain union PVC-U Ø110mm                                | 100         | Ø110               | -                  | -           | 0.10        |
| 1367         | Lifting tool 5mm slots                                      | -           | -                  | -                  | -           | 0.20        |



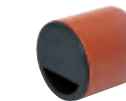
Sump unit with silt bucket



Closing end cap



Ø110mm outlet end cap



Ø110mm horizontal foul air-trap



Ø110mm drain union





## ACO HEXDRAIN® PRO

### ACO HEXDRAIN® PRO CHANNEL ASSEMBLY

| PRODUCT CODE | DESCRIPTION  | LENGTH (MM) | WIDTH OVERALL (MM) | DEPTH OVERALL (MM) | INVERT (MM) | WEIGHT (KG) |
|--------------|--|-------------|--------------------|--------------------|-------------|-------------|
| 11025        | Channel with black composite Heelguard™ grating 1m | 1000        | 138                | 150                | 125         | 3.7         |

### ACO HEXDRAIN® PRO ACCESSORIES

| PRODUCT CODE | DESCRIPTION                                  | LENGTH (MM) | WIDTH OVERALL (MM) | DEPTH OVERALL (MM) | INVERT (MM) | WEIGHT (KG) |
|--------------|--|-------------|--------------------|--------------------|-------------|-------------|
| 11086        | Universal end cap                            | 11          | 138                | 150                | -           | 0.10        |
| 11285        | Ø110mm vertical outlet connector             | -           | Ø110               | 60                 | -           | 0.10        |
| 11286        | Ø160mm vertical outlet connector             | -           | Ø160               | 80                 | -           | 0.20        |
| 11191        | Ø110mm roddable foul air-trap                | 240         | Ø110               | 400                | -           | 1.20        |
| 11192        | Ø160mm roddable foul air-trap                | 340         | Ø160               | 415                | -           | 1.40        |
| 11385        | Black plastic sump assembly c/w silt bucket* | -           | Ø160               | 510                | -           | 3.00        |

\* Sump assembly consists of a Ø160mm vertical outlet connector, silt bucket and sump body. Sump unit: Ø110mm outlet (upper) invert height to F.G.L = 362mm. Ø110mm or Ø160mm outlet (lower) invert height to F.G.L = 632mm.



Universal end cap



Ø110mm vertical outlet connector



Ø160mm vertical outlet connector



Ø110mm roddable foul air-trap



Ø160mm roddable foul air-trap



Sump unit with silt bucket





## ACO CIVICDRAIN®

### ACO CIVICDRAIN® CHANNEL ASSEMBLIES

| PRODUCT CODE | DESCRIPTION  | LENGTH (MM) | WIDTH OVERALL (MM) | DEPTH OVERALL (MM) | INVERT (MM) | WEIGHT (KG) |
|--------------|--|-------------|--------------------|--------------------|-------------|-------------|
| 25010        | CivicDrain® 0.0 channel with black composite Heelguard™ grating  | 1000        | 135                | 150                | 130         | 14.4        |
| 25011        | CivicDrain® 10.0 channel with black composite Heelguard™ grating | 1000        | 135                | 200                | 180         | 18.8        |
| 25012        | CivicDrain® 20.0 channel with black composite Heelguard™ grating | 1000        | 135                | 250                | 230         | 22.5        |

### ACO CIVICDRAIN® ACCESSORIES

| PRODUCT CODE | DESCRIPTION                              | LENGTH (MM) | WIDTH OVERALL (MM) | DEPTH OVERALL (MM) | INVERT (MM) | WEIGHT (KG) |
|--------------|--|-------------|--------------------|--------------------|-------------|-------------|
| 12680        | 522DL black composite Heelguard™ grating | 500         | 123                | 21                 | -           | 1.20        |
| 12601        | 50mm step connector                      | 100         | 75                 | 50                 | -           | 0.40        |
| 23404        | Multifunctional end cap                  | -           | 135                | 75/300             | -           | 0.16        |
| 23410        | Universal sump with plastic silt bucket* | 500         | 135                | 635                | 615         | 32.8        |
| 0056         | 820 Drain union PVC-U Ø110mm             | 100         | Ø110               | -                  | -           | 0.10        |
| 2640         | 920 Foul air-trap PVC-U Ø110mm           | -           | Ø110               | -                  | -           | 0.50        |
| 7931         | 940 Roddable foul air trap MDPE Ø110mm   | -           | Ø110               | -                  | -           | 0.60        |
| 23415        | Drainlock™ security locking assembly     | -           | -                  | -                  | -           | 0.10        |
| 23416        | Drainlock™ security key                  | -           | -                  | -                  | -           | 0.01        |
| 1367         | Drainlock™ grating lifting tool 835      | -           | -                  | -                  | -           | 0.10        |

\* Grating must be purchased separately.



522DL Black composite Heelguard™ grating



50mm Step connector



Multifunctional end cap



Universal sump with plastic silt bucket



Ø110mm drain union PVC-U



Ø110mm foul air-trap PVC-U



## ACO EYELEDs

### ACO EYELEDs CHANNEL ASSEMBLIES

| PRODUCT CODE | DESCRIPTION   | LENGTH (MM) | WIDTH OVERALL (MM) | DEPTH OVERALL (MM) | INVERT (MM) | WEIGHT (KG) |
|--------------|---|-------------|--------------------|--------------------|-------------|-------------|
| 11404        | Channel with 2 Eyeled gratings (white LED)                              | 1000        | 138                | 100                | 75          | 3.20        |
| 11405        | Channel with 1 Eyeled grating and 1 B 125 composite grating (white LED) | 1000        | 138                | 100                | 75          | 3.05        |
| 11406        | Channel with 2 Eyeled gratings (blue LED)                               | 1000        | 138                | 100                | 75          | 3.20        |
| 11407        | Channel with 1 Eyeled grating and 1 B 125 composite grating (blue LED)  | 1000        | 138                | 100                | 75          | 3.05        |

### ACO EYELEDs LIGHTING ACCESSORIES

| PRODUCT CODE | DESCRIPTION                 | LENGTH (MM) | WIDTH OVERALL (MM) | DEPTH OVERALL (MM) | INVERT (MM) | WEIGHT (KG) |
|--------------|-----------------------------|-------------|--------------------|--------------------|-------------|-------------|
| 12736        | Transformer unit            | -           | -                  | -                  | -           | 0.51        |
| 12714        | Cable splitter 300 x 300mm  | -           | -                  | -                  | -           | 0.06        |
| 12726        | Cable splitter 600 x 600mm  | -           | -                  | -                  | -           | 0.08        |
| 12713        | Cable splitter 300 x 1500mm | -           | -                  | -                  | -           | 0.11        |
| 12716        | Extension cable 2000mm      | -           | -                  | -                  | -           | 0.10        |
| 12715        | Extension cable 5000mm      | -           | -                  | -                  | -           | 0.23        |
| 12724        | Cable connection plug       | -           | -                  | -                  | -           | 0.003       |

### ACO EYELEDs DRAINAGE ACCESSORIES

| PRODUCT CODE | DESCRIPTION                                  | LENGTH (MM) | WIDTH OVERALL (MM) | DEPTH OVERALL (MM) | INVERT (MM) | WEIGHT (KG) |
|--------------|--|-------------|--------------------|--------------------|-------------|-------------|
| 11085        | Universal end cap                            | 11          | 138                | 105                | -           | 0.10        |
| 11285        | Ø110mm vertical outlet connector             | -           | Ø110               | 60                 | -           | 0.10        |
| 11286        | Ø160mm vertical outlet connector             | -           | Ø160               | 80                 | -           | 0.10        |
| 11191        | Ø110mm roddable foul air-trap                | 240         | Ø110               | 400                | -           | 1.20        |
| 11192        | Ø160mm roddable foul air-trap                | 340         | Ø160               | 415                | -           | 1.40        |
| 11385        | Black plastic sump assembly c/w silt bucket* | -           | Ø160               | 510                | -           | 3.00        |

\* Sump assembly consists of a Ø160mm vertical outlet connector, silt bucket and sump body. Sump unit: Ø110mm outlet (upper) invert height to F.G.L = 362mm. Ø110mm or Ø160mm outlet (lower) invert height to F.G.L = 632mm.



Transformer unit  
(for up to 40 eyeled gratings)



Cable splitter



Extension cable



Cable connection plug



Universal end cap



ACO Eyeleds  
Ø110mm  
vertical outlet  
connector



ACO Eyeleds  
Ø160mm  
vertical outlet  
connector



ACO Eyeleds  
Ø110mm  
roddable foul  
air-trap



ACO Eyeleds  
Ø160mm  
roddable foul  
air-trap



ACO Eyeleds  
sump unit





## ACO HEXDRAIN® BRICKSLOT

### ACO HEXDRAIN® BRICKSLOT CHANNEL ASSEMBLY

| PRODUCT CODE | DESCRIPTION                                   | LENGTH (MM) | WIDTH OVERALL (MM) | DEPTH OVERALL (MM) | INVERT (MM) | WEIGHT (KG) |
|--------------|---|-------------|--------------------|--------------------|-------------|-------------|
| 319561       | Channel with black plastic slotted grating 1m | 1000        | 129                | 148                | 143         | 1.6         |

### ACO HEXDRAIN® BRICKSLOT ACCESSORIES

| PRODUCT CODE | DESCRIPTION  | LENGTH (MM) | WIDTH OVERALL (MM) | DEPTH OVERALL (MM) | INVERT (MM) | WEIGHT (KG) |
|--------------|--|-------------|--------------------|--------------------|-------------|-------------|
| 319560       | Corner unit with black plastic slotted grating and vertical outlet | 125         | 125                | 193                | 143         | 0.40        |
| 19558        | Black plastic sump unit ††   | 174         | Ø118               | 250                | -           | 0.30        |
| 319288       | Closing end cap  | 6           | 129                | 97                 | -           | 0.03        |

†† Sump unit Ø110mm outlet spigot invert height from F.G.L = 345mm. Sump unit should be purchased with corner unit with black plastic slotted grating and vertical outlet (Product code 319560).



Corner unit with black plastic slotted grating and Ø110mm vertical outlet

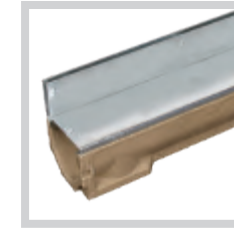


Sump unit



Closing end cap





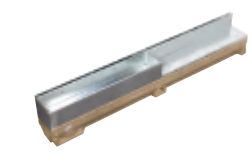
## ACO RAINDRAIN® BRICKSLOT B 125

### ACO RAINDRAIN® BRICKSLOT B 125 CHANNEL ASSEMBLIES

| PRODUCT CODE | DESCRIPTION  | LENGTH (MM) | WIDTH OVERALL (MM) | DEPTH OVERALL (MM) | INVERT (MM) | WEIGHT (KG) |
|--------------|--|-------------|--------------------|--------------------|-------------|-------------|
| 47002        | Channel with slotted galvanised steel grating          | 1000        | 118                | 173                | 163         | 6.6         |
| 47003        | Channel with slotted galvanised grate and access cover | 1000        | 118                | 173                | 163         | 9.7         |

### ACO RAINDRAIN® BRICKSLOT B 125 ACCESSORIES

| PRODUCT CODE | DESCRIPTION                                       | LENGTH (MM) | WIDTH OVERALL (MM) | DEPTH OVERALL (MM) | INVERT (MM) | WEIGHT (KG) |
|--------------|---|-------------|--------------------|--------------------|-------------|-------------|
| 47004        | Sump with galvanised access cover c/w silt bucket | 500         | 118                | 378                | 360         | 12.80       |
| 319288       | Closing end cap                                   | 6           | 129                | 97                 | -           | 0.03        |
| 01684        | Horizontal foul air-trap                          | 100         | Ø110               | -                  | -           | 0.20        |
| 0056         | 820 Drain union PVC-U Ø110mm                      | 100         | Ø110               | -                  | -           | 0.10        |



Access channel



Sump unit with silt bucket



Closing end cap



Ø110mm horizontal foul air-trap



Ø110mm drain union





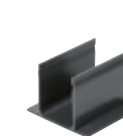
## ACO THRESHOLD DRAIN

### ACO THRESHOLD DRAIN

| PRODUCT CODE | DESCRIPTION                                    | LENGTH (MM) | WIDTH OVERALL (MM) | DEPTH OVERALL (MM) | INVERT (MM) | WEIGHT (KG) |
|--------------|--|-------------|--------------------|--------------------|-------------|-------------|
| 19000        | ACO Threshold Drain - silver aluminium grating | 1000        | 61                 | 100                | 93          | 1.63        |
| 19005        | ACO Threshold Drain - black aluminium grating  | 1000        | 61                 | 100                | 93          | 1.63        |

### ACO THRESHOLD DRAIN ACCESSORIES

| PRODUCT CODE | DESCRIPTION                            | LENGTH (MM) | WIDTH OVERALL (MM) | DEPTH OVERALL (MM) | INVERT (MM) | WEIGHT (KG) |
|--------------|--|-------------|--------------------|--------------------|-------------|-------------|
| 19001        | Bottom connector                       | 100         | 100                | 70                 | N/A         | 0.11        |
| 19002        | Bottom outlet Ø80mm                    | 100         | 61                 | 70                 | N/A         | 0.12        |
| 19003        | End cap Ø50mm outlet                   | 40          | 61                 | 100                | N/A         | 0.06        |
| 19004        | Closing end cap                        | 20          | 61                 | 100                | N/A         | 0.03        |
| 19006        | Corner unit – silver aluminium grating | 159         | 61                 | 100                | N/A         | 0.4         |
| 19007        | Corner unit – black aluminium grating  | 159         | 61                 | 100                | N/A         | 0.4         |



Drain connector



Ø80mm bottom outlet



Closing end cap



Corner unit – silver aluminium grating



Corner unit – black aluminium grating





## ACO DOORWAY DRAIN

### ACO DOORWAY DRAIN CHANNEL ASSEMBLY

| PRODUCT CODE | DESCRIPTION        | LENGTH (MM) | WIDTH OVERALL (MM) | DEPTH OVERALL (MM) | INVERT (MM) | WEIGHT (KG) |
|--------------|--------------------|-------------|--------------------|--------------------|-------------|-------------|
| 40015        | ACO DoorWay Drain* | 1012        | 125                | 80                 | 75          | 4.0         |

\*Unit consists of 1m channel with removable two-piece stainless steel gratings, 2 x end caps and 110mm vertical outlet connector





## ACO STEPDRAIN

### ACO STEPDRAIN CHANNEL ASSEMBLIES

| PRODUCT CODE | DESCRIPTION                    | LENGTH (MM) | WIDTH OVERALL (MM) | DEPTH OVERALL (MM) | INVERT (MM) | WEIGHT (KG) |
|--------------|--------------------------------|-------------|--------------------|--------------------|-------------|-------------|
| 96809        | ACO StepDrain channel assembly | 940         | 53                 | 159                | 150         | 9.0         |
| 96848        | ACO StepDrain channel assembly | 1088        | 125                | 159                | 150         | 10.4        |



## ACO DRAINMAT

### ACO DRAINMAT POLYMER CONCRETE BASES

| PRODUCT CODE | DESCRIPTION                      | LENGTH (MM) | WIDTH OVERALL (MM) | DEPTH OVERALL (MM) | INVERT (MM) | WEIGHT (KG) |
|--------------|----------------------------------|-------------|--------------------|--------------------|-------------|-------------|
| 0398         | Polymer concrete base 600 x 400  | 600         | 400                | 80                 | -           | 12.0        |
| 0399         | Polymer concrete base 750 x 500  | 750         | 500                | 80                 | -           | 18.0        |
| 0400         | Polymer concrete base 1000 x 500 | 1000        | 500                | 80                 | -           | 21.6        |

### ACO DRAINMAT POLYPROPYLENE BASE

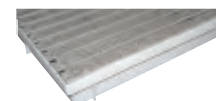
| PRODUCT CODE | DESCRIPTION                  | LENGTH (MM) | WIDTH OVERALL (MM) | DEPTH OVERALL (MM) | INVERT (MM) | WEIGHT (KG) |
|--------------|------------------------------|-------------|--------------------|--------------------|-------------|-------------|
| 82400        | Polypropylene base 600 x 400 | 600         | 400                | 75                 | -           | 1.5         |

### MAT STYLES

| PRODUCT CODE | DESCRIPTION                                | LENGTH (MM) | WIDTH OVERALL (MM) | DEPTH OVERALL (MM) | INVERT (MM) | WEIGHT (KG) |
|--------------|--|-------------|--------------------|--------------------|-------------|-------------|
| 1207         | Galvanised steel mesh 600 x 400            | 600         | 400                | 20                 | -           | 4.00        |
| 1208         | Galvanised steel mesh 750 x 500            | 750         | 500                | 20                 | -           | 6.30        |
| 1209         | Galvanised steel mesh 1000 x 500           | 1000        | 500                | 20                 | -           | 8.60        |
| 1210         | Anthracite carpet and aluminium 600 x 400  | 600         | 400                | 20                 | -           | 3.50        |
| 1211         | Anthracite carpet and aluminium 750 x 500  | 750         | 500                | 20                 | -           | 4.70        |
| 1212         | Anthracite carpet and aluminium 1000 x 500 | 1000        | 500                | 20                 | -           | 6.30        |
| 02180        | Light grey carpet and aluminium 600 x 400  | 600         | 400                | 20                 | -           | 3.50        |
| 02181        | Light grey carpet and aluminium 750 x 500  | 750         | 500                | 20                 | -           | 4.70        |
| 02182        | Light grey carpet and aluminium 1000 x 500 | 1000        | 500                | 20                 | -           | 6.30        |
| 1213         | Black rubber and aluminium 600 x 400       | 600         | 400                | 20                 | -           | 3.50        |
| 1214         | Black rubber and aluminium 750 x 500       | 750         | 500                | 20                 | -           | 5.60        |
| 1215         | Black rubber and aluminium 1000 x 500      | 1000        | 500                | 20                 | -           | 7.50        |

| PRODUCT CODE | DESCRIPTION                  | LENGTH (MM) | WIDTH OVERALL (MM) | DEPTH OVERALL (MM) | INVERT (MM) | WEIGHT (KG) |
|--------------|------------------------------|-------------|--------------------|--------------------|-------------|-------------|
| 0056         | 820 Drain union PVC-U Ø110mm | 100         | Ø110               | -                  | -           | 0.10        |

### ACO DRAINMAT ACCESSORIES



ACO DrainMat polypropylene base (image shows base with mat,



Galvanised steel mesh



Anthracite carpet and aluminium mat



Light grey carpet and aluminium mat

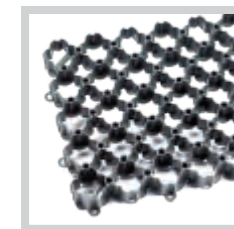


Black rubber and aluminium mat



Ø110mm drain union





## ACO GROUNDGUARD

### ACO GROUNDGUARD

| PRODUCT CODE | DESCRIPTION                    | LENGTH (MM) | WIDTH OVERALL (MM) | DEPTH OVERALL (MM) | INVERT (MM) | WEIGHT (KG) |
|--------------|--------------------------------|-------------|--------------------|--------------------|-------------|-------------|
| 81070        | GroundGuard tile               | 585         | 385                | 38                 | -           | 1.30        |
| 81072        | White parking bay marker       | -           | -                  | 38                 | -           | 0.10        |
| 81073        | ACO 180mm steel nails (bag 50) | 180         | 6                  | -                  | -           | 1.30        |

Note: 4.42 tiles per 1m<sup>2</sup>. One pallet covers 25.2m<sup>2</sup>.

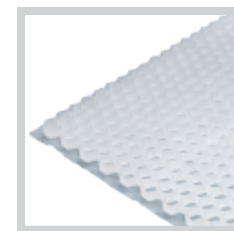


White parking bay markers



ACO 180mm steel nail





## ACO GRAVELGUARD

### ACO GRAVELGUARD

| PRODUCT CODE | DESCRIPTION            | LENGTH (MM) | WIDTH OVERALL (MM) | DEPTH OVERALL (MM) | WEIGHT (KG) |
|--------------|------------------------|-------------|--------------------|--------------------|-------------|
| 281074       | GravelGuard tile – PRO | 1520        | 1180               | 32                 | 4           |

281074 GravelGuard PRO geotextile is 45g/m<sup>2</sup>

Note: One pallet of GravelGuard (16 pieces) – PRO covers per 28.7m<sup>2</sup>





## ACO BORDERGUARD

### ACO BORDERGUARD

| PRODUCT CODE | DESCRIPTION                    | LENGTH (MM) | WIDTH OVERALL (MM) | DEPTH OVERALL (MM) | WEIGHT (KG) | PACK QUANTITY |
|--------------|--------------------------------|-------------|--------------------|--------------------|-------------|---------------|
| 81100        | BorderGuard unit               | 1000        | 80                 | 45                 | -           | 0.4           |
| 81110        | Synthetic fixing nails         | 250         | 14                 | -                  | -           | 0.1           |
| 81073        | ACO 180mm steel nails (bag 50) | 180         | 6                  | -                  | -           | 1.3           |

Synthetic fixing nail  
Synthetic H-Section nails  
for maximum stability  
Use 5 per metre



ACO 180mm steel nail  
Steel nail for use with a  
compacted sub-base  
Use 6 per metre







## ACO STORMBRIXX SD

### ACO STORMBRIXX SD UNITS AND SIDE PANELS

| PRODUCT CODE | DESCRIPTION                         | LENGTH OVERALL (MM) | WIDTH OVERALL (MM) | DEPTH OVERALL (MM) | WEIGHT (KG) |
|--------------|-------------------------------------|---------------------|--------------------|--------------------|-------------|
| 314090       | ACO StormBrixx tank body            | 1200                | 600                | 494                | 9.41        |
| 314091       | ACO StormBrixx side panel           | 580                 | 592                | 104                | 3.13        |
| 314092       | ACO StormBrixx top cover (set of 4) | 550                 | 550                | 45                 | 0.76        |

### ACO STORMBRIXX SD INLET/OUTLET PIPE AND VERTICAL CONNECTORS

| PRODUCT CODE | DESCRIPTION                      | LENGTH OVERALL (MM) | WIDTH OVERALL (MM) | DEPTH OVERALL (MM) | WEIGHT (KG) |
|--------------|----------------------------------|---------------------|--------------------|--------------------|-------------|
| 27056        | 110mm pipe connector with flange | -                   | Ø110               | -                  | 0.75        |
| 27057        | 160mm pipe connector with flange | -                   | Ø160               | -                  | 1.25        |
| 27058        | 225mm pipe connector with flange | -                   | Ø225               | -                  | 1.4         |
| 27059        | 300mm pipe connector with flange | -                   | Ø300               | -                  | 1.75        |
| 314093       | Layer connector                  | 53.4                | 44.2               | 26.5               | 0.1         |



## QUALITY

ACO has been certified and registered by BSI, to operate an Environmental Management, Quality and Occupational Health & Safety Management Systems, which comply with the requirements of ISO 14001:2004, ISO 9001:2008 and ISO OHSAS 18001:2007



ISO 9001 Certificate



ISO 14001 Certificate



OHSAS 18001 Certificate

## SUSTAINABILITY

### SUSTAINABILITY

ACO recognise that sustainability is the single most important issue that the construction industry will face over the coming years.

Our research and development programme aims to maximise the use of sustainable material but, importantly, also strives to improve manufacturing and administrative processes that impact our environment.

### RESPONSIBLE SOURCING

ACO have developed a programme of continual improvement which seeks to ensure, where practical, all products manufactured are made from sustainable materials – recycled and recyclable.

The company has a programme of residues, ensuring that all packaging, palletising and office residues are segregated and managed in an ecologically sustainable manner.

## SuDS

Sustainable Drainage Systems (SuDS) aim to control surface rainfall run-off by controlling the rate and volume of runoff from your site, relieving pressure on sewerage systems and mimicking natural drainage as closely as possible. Used effectively, SuDS can help developers deliver greener housing infrastructure.

We have unrivalled experience in designing, creating and advising on fully-integrated and sustainable surface water management systems. Whatever your requirements, we can help you deliver an effective solution and support you with best practice, relevant information and dedicated resources on an ongoing basis.

ACO believes that the best SuDS will be cost effective to operate and provide efficient drainage throughout their life. Rather than being inherently ‘soft’ or ‘hard’, they will instead include an optimized and integral mix of ‘soft’ and ‘hard’ components that will combine to bring out the best in each other.





**BUILDING +  
LANDSCAPE**  
VISUALISER



## BUILDING + LANDSCAPE VISUALISER

Choose from a range of attractive and modern drainage systems and gratings to enhance the surface finish of your patio, driveway and threshold projects.

Visit the **Building+Landscape Visualiser** for more details:  
[www.aco.co.uk/building+landscapevisualiser](http://www.aco.co.uk/building+landscapevisualiser)



