



Jaymart

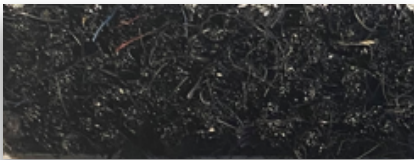
Brush Well Coir Matting Product Information

A superior quality 100% coir matting PVC backed available in 14mm, 17mm, 20mm, 23mm & 30mm options. The exceptional quality allows for a natural product with an attractive colour palette. Not DDA or wheel chair compliant.

Description/ Colours Available

Description

Brush Well coir is 100% coir with a pvc matting. It is a natural product with an incredible ability to absorb moisture from the air as well as foot borne traffic. Contributes to a constant Humidity. Coir has good flame resistance and will not be ignited even from a lit cigarette end.



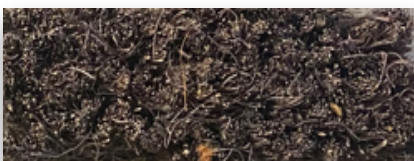
Black (K17)



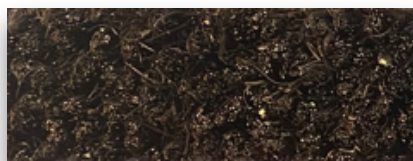
Anthracite (K04)



Blue (K12)



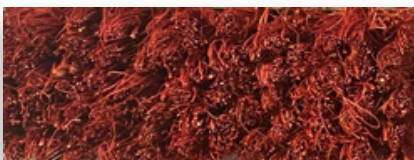
Dark Grey (K11)



Brown (K02)



Green (K13)



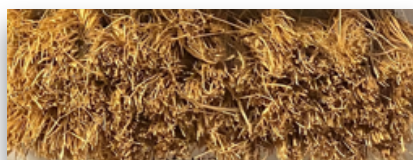
Red (K16)



Ochre (K18)



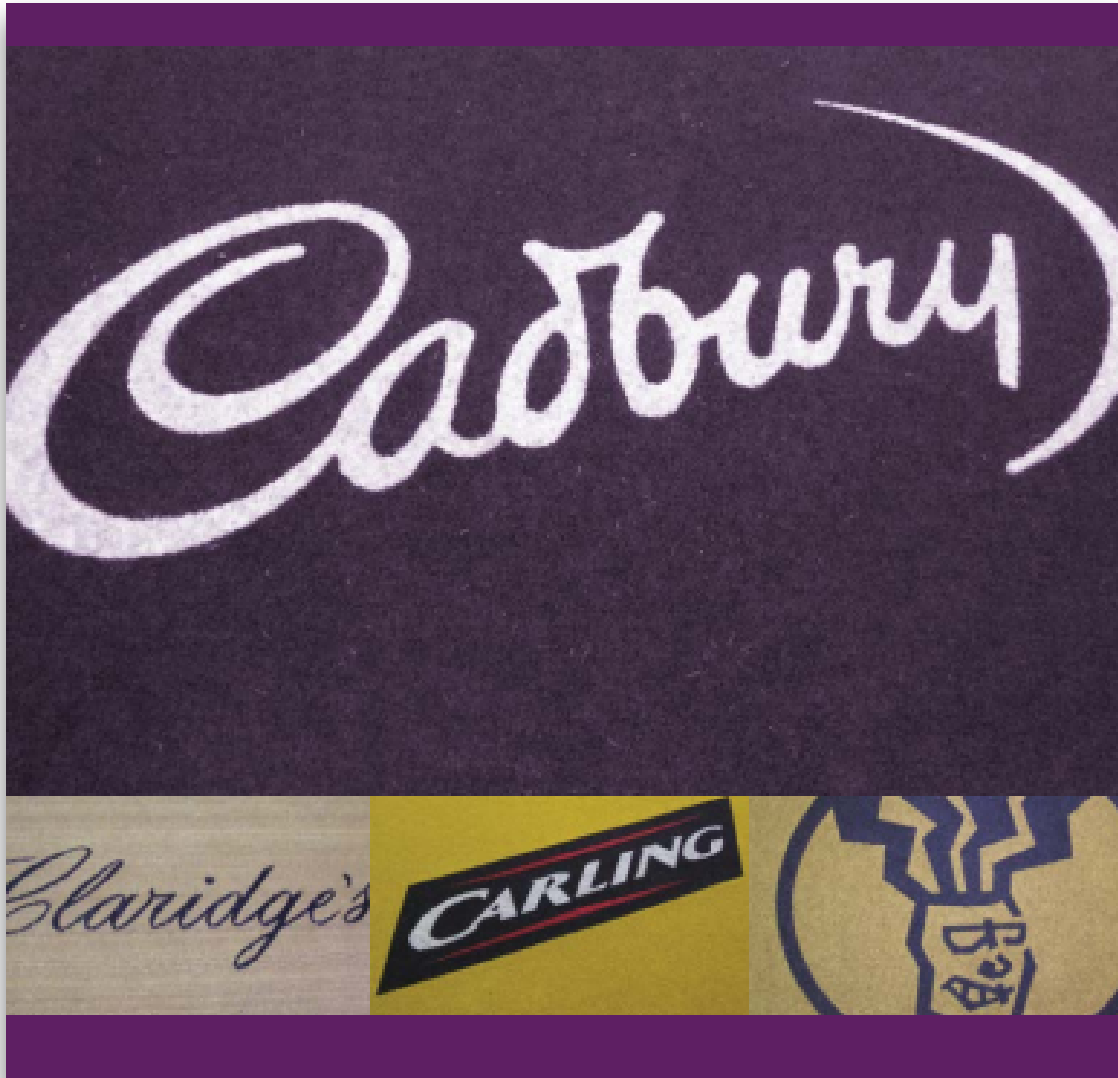
Rust



Natural

Brush Well

Brush Well can be incorporated into designs and logo mats



Please note coir is not UV or rot resistant.

Brush Well Specification

Pile

100% Coir

Backing

PVC

Gauges

Natural (Fawn) 14mm, 17mm, 20mm, 23mm and 30mm

Colours 17mm Only

Availability

Rolls, cut lengths or "tailor made" special sizes

Natural 14mm, 17mm, 20mm and 23mm are available in roll sizes 15m x 1m or 2m wide

30mm is available in 5m or 10m x 1m or 2m wide

17mm colours are available in 12.5m x 1m or 2m wide

Weight (Approx)

Natural 14mm - 5.3kg/m²

Natural 17mm - 6.6kg/m²

Natural 20mm - 6.9kg/m²

Natural 23mm - 7.5kg/m²

Natural 30mm 9kg/m²

Tear Resistance

>60

Pile Density (approx)

35000 yarn fibre/m²

Other properties

PVC backed coir matting is anti-static, sound deadening and has brilliant brushing action for removing dirt from shoes. It's incredible ability to absorb water from the air as well as from foot borne traffic contributes to a constant humidity. PVC backed coir has good flame resistance and will not ignite even from a lit cigarette end.

Lettered/ Logo Mats

We supply lettered and logo mats in 17mm thickness by cutting and inserting using natural and colours.

Dyed colours

The coir fibre of PVC backed coir is a natural product and we cannot yet guarantee the colour fastness of the dyed colours. Specifiers and users requiring more colour fast colours should employ our Ingenius synthetic brush matting. Which is also incidentally much harder wearing.

"Shadow effect" phenomenon

Like other velour carpets, PVC backed coir matting can experience the "shadow effect" phenomenon as a result of traffic flow/compression. Customers must accept responsibility of this when ordering coir.

DDA requirements

Please note that PVC backed coir does not meet the DDA regulations or Part M building regulations that came in to force in October 2004, as it is classified as impeding the movement of wheelchairs. We therefore recommend our Ingenius which is compliant with these regulations.

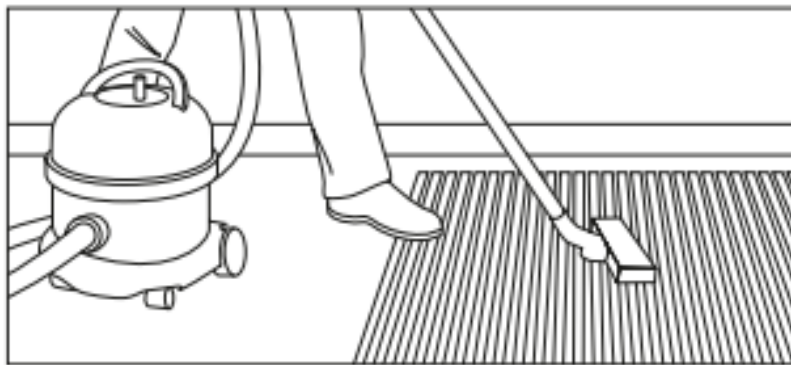
Brush Well Installation, Cleaning & Maintenance

Installation

Allow up to 12mm expansion when fitting coir where high moisture absorbing is expected. Full bonding will reduce the need for such allowance. We would suggest full bonding of mats over 2 m².

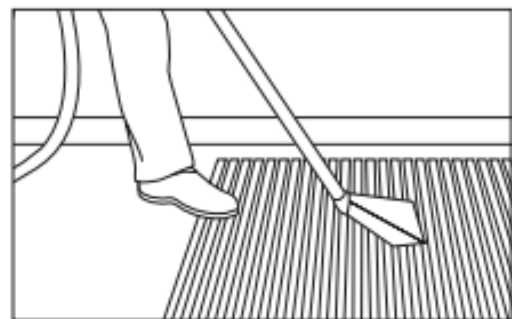
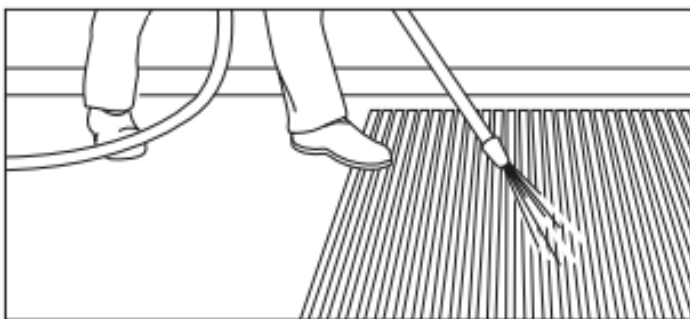
Maintenance

We recommend daily vacuuming with suction attachment for best appearance retention and longer working life



For periodic maintenance the best results can be achieved by the periodic use of a spray or dry extraction carpet cleaning machine, or where possible by the removal of the matting for pressure washing or steam cleaning.

The use of a mild detergent (neutral pH) cleaning solution in the carpet cleaning machine should loosen ingrained soiling and aid the removal of oils and grease.



More stubborn stains should be treated with a solvent based spot remover prior to re-cleaning with the detergent solution.

Chewing gum can be removed by freeze spraying or with a proprietary chewing gum remover and then scraped or combed out of the matting carpet pile. This should be done before the full cleaning process is started.



Our 4 step process to a cleaner environment

Step 1

The best way to keep your premises clean is to stop dirt from even getting through the front door. Effective exterior matting scrapes clean and wipes dry, leaving the worst dirt and grit outside, and allowing subsequent interior matting to clean even better.

Step 2

Working in a similar way to exterior matting, this is similarly tough and durable matting that carries on the work to remove the last of the most damaging soil and grit, and continue the drying process.

Step 3

With the worst of the damp and debris now dealt with, secondary internal matting is a high-specification, high-performance product that finishes the dusting and drying.

Step 4

The foyer is one of the highest traffic areas in your building so, however effective your entrance matting, easy to clean, highly durable and attractive carpet that always looks its best will help you make a great first impression – every time.

Environmental Impact/ Responsibility

Our Products Use 100% recycled Aluminium and can be recycled after use making our aluminium mat products very environmentally friendly. This combined with the ability to replace the insert material rather than replacing the whole mat, means that although not directly eligible for BREEAM Credits selecting Jaymart will help in supporting your BREEAM certification.

We Manufacture in the United Kingdom to precise specifications/ measurements. This means Jaymart can reduce waste and transport.

Our products are extremely Hardwearing and will reduce the need for frequent replacement to support BREEAM MAT 05 criteria and also minimise the use of harmful cleaning chemicals and cleaning/ maintenance costs for the end user.

BREEAM MAT 01 addresses the environmental impact through the lifecycle of the product. The Jaymart aluminium entrance matting system have the ability to refurbish rather than replace means that our products can further support your aims. It will also help with meeting BREEAM MAT 06 requirements. We can also offer products made from natural inserts from sustainable sources to further meet environmental aims. The expected useful lifespan when refurbished is 30 years approximately dependent on wear and correct maintenance being carried out.



Proudly Manufactured in The UK



100% Recycled Aluminium





Jaymart

**Jaymart Rubber & Plastics
Limited**

**Roman Way, Crusader
Park,**

Warminster

BA12 8SP

Tel 01985 218994

Email: sales@jaymart.co.uk

www.jaymart.co.uk