



ASCENT™

Anchor Device





The latest additions to our Ascent post family are the Ascent Anchor Device and Ascent Anchor Point.

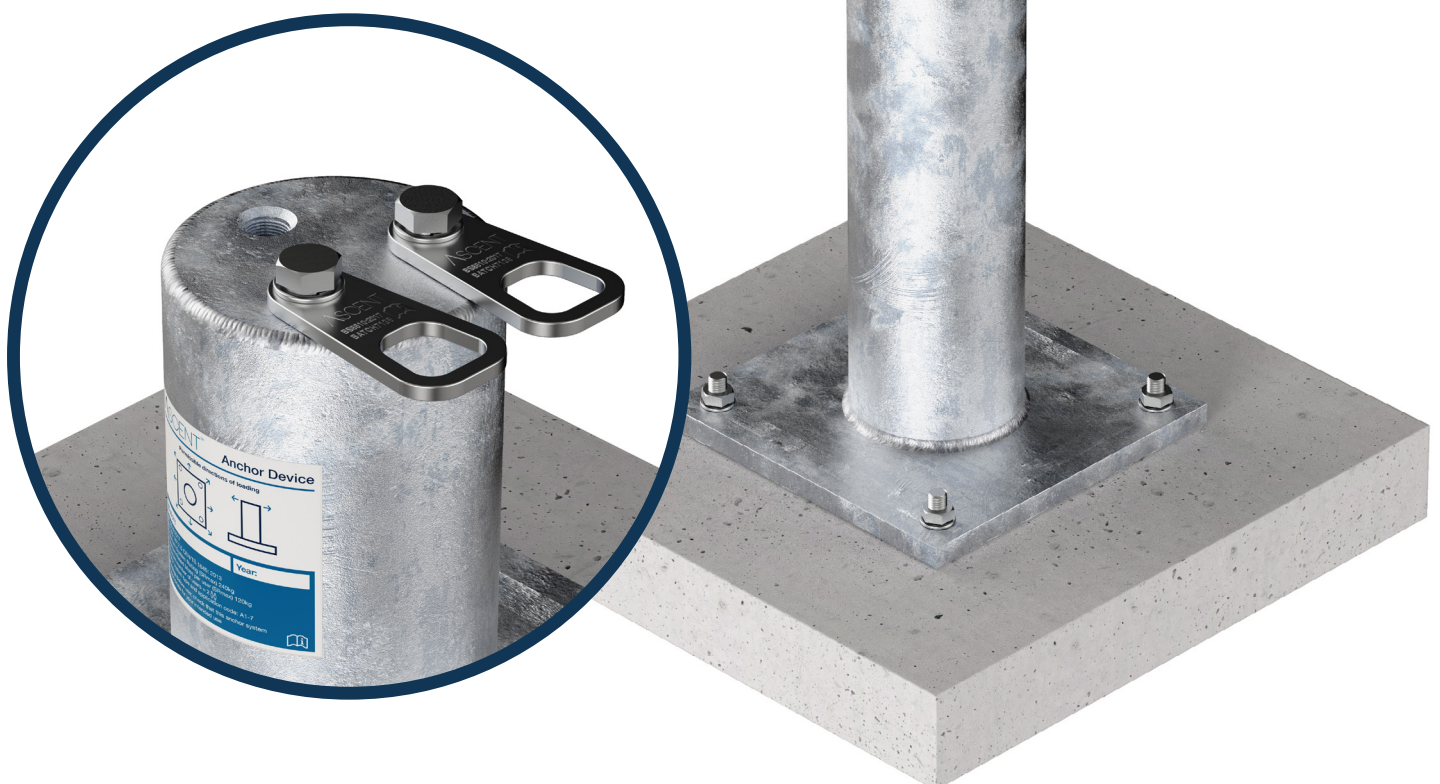
The Ascent Anchor Device has 3 applications;

1. A structural anchor device designed for use in conjunction with a Cable Based Fall Protection system conforming to EN 795 Class C
2. As a stand-alone EN 795 Class A anchor device for individual Fall protection.
3. As an anchor device for Industrial Roped Access to BS 8610:2017 (including rescue)

The Ascent Anchor Point has 2 applications;

1. An anchor point for Industrial Roped Access to BS 8610:2017 (including rescue)
2. As a stand-alone EN 795 Class A anchor point for individual Fall protection.

The post is designed & tested specifically for use on Reinforced Concrete roofs and is available in 4 heights; 200, 400, 600 & 800mm to suit varying roof build ups.



The Ascent Anchor Device is supplied with Three M12 BZP threaded inserts in the top of the post. These inserts are designed & tested to receive anchor points for both Fall Protection and Abseil.

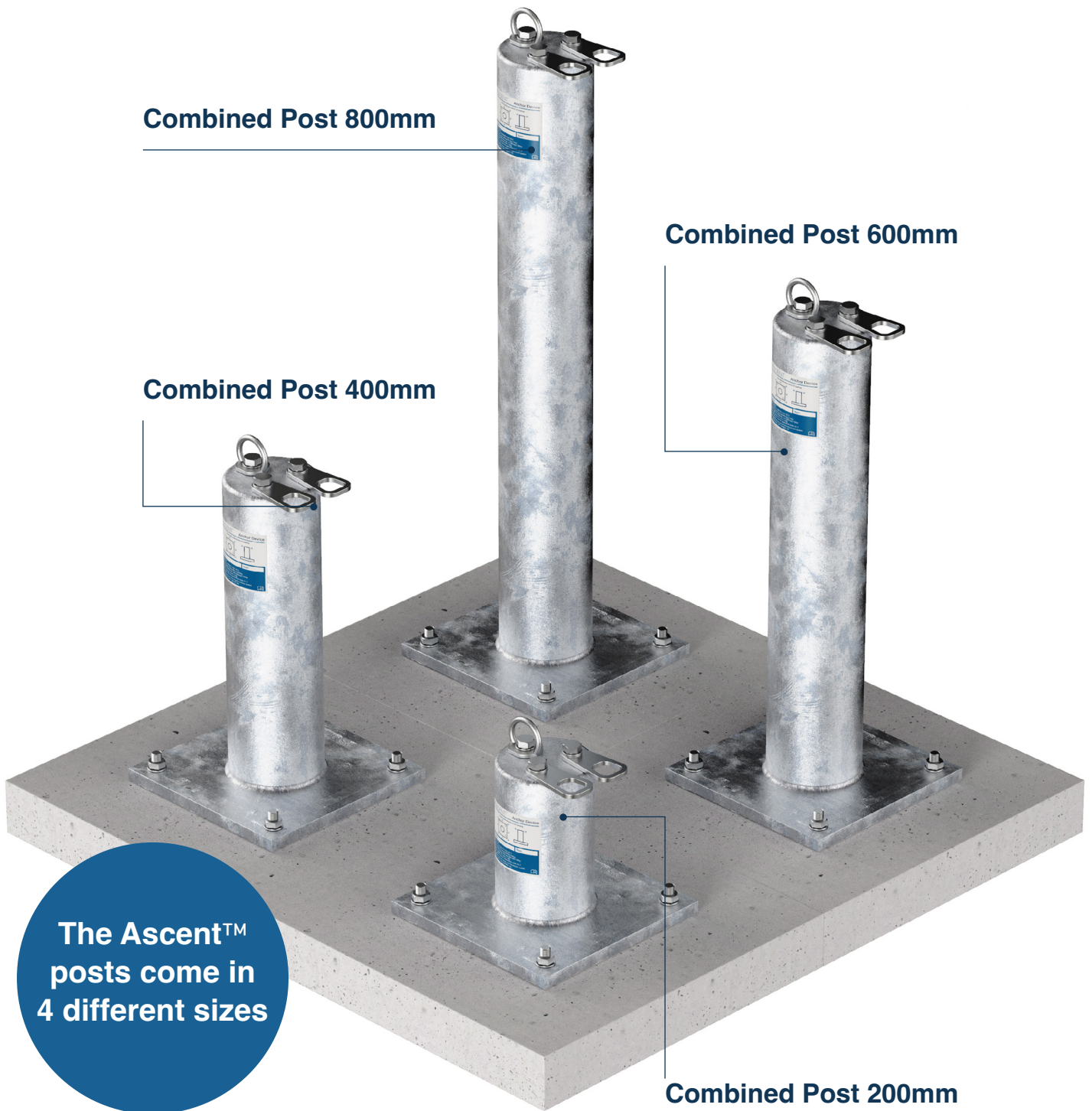
For Fall Protection the M12 insert suit components supplied by the majority of the leading Cable Based Engineered Fall Protection system suppliers. It is the responsibility of the System designer to ensure that the loads potentially generated by the system do not exceed the capacity of the anchor device.

The M12 BZP threaded insert is designed to receive an A2 M12 x 40 stainless steel set screw. We recommend that an anti-seize compound is applied to both the thread of the set-screw and the threaded insert. To ensure water-tight integrity is maintained we recommend the addition of an M12 Form G Nylon Sealing washer be installed between the top component and the head of the post.

For use in Industrial Roped Access applications the Ascent Abseil Point is designed specifically for attachment by Industrial Rope Access Technicians. It is tested for use in both Rope Access and work positioning to BS 8610:2017 Class A 3 and Rescue – accompanied descent, remotely or self – operated – direct attachment & redirect attachment and evacuation Class A4, 5, 6 & 7.



For general enquiries and the price of this product, please call us on 0114 285 2203



Ascent Fall Protection Posts are manufactured from Galvanised Mild Steel. The Posts are tested as a complete anchor system to reinforced concrete, but are typically supplied as a separate Anchor Device & Anchor Point (S) with the specialist installer providing the permanent fixing element suitable to the background to which the anchor device is to be affixed. All Ascent™ products have been approved through the necessary safety & structural calculation.

One device that does it all



Specifications for the different size Ascent™ posts:

Post Type	Use	Height	Base plate size	Base plate hole centres & size	Intended background	Maximum tested load	Top Anchor point fixing size
Ascent™ Anchor Device	Fall protection to BS EN 795 Class A1, A2, A3, A4, A5, A6 + A7 & C with load managed to meet maximum tested load. Industrial Roped Access to BS 8610: 2017	200mm	250 x 250	200 x 200 @ 20mm dia	Horizontal concrete slab	25 kN	M12
Ascent™ Anchor Device	Fall protection to BS EN 795 Class A1, A2, A3, A4, A5, A6 + A7 & C with load managed to meet maximum tested load. Industrial Roped Access to BS 8610: 2017	400mm	250 x 250	200 x 200 @ 20mm dia	Horizontal concrete slab	25 kN	M12
Ascent™ Anchor Device	Fall protection to BS EN 795 Class A1, A2, A3, A4, A5, A6 + A7 & C with load managed to meet maximum tested load. Industrial Roped Access to BS 8610: 2017	600mm	250 x 250	200 x 200 @ 20mm dia	Horizontal concrete slab	25 kN	M12
Ascent™ Anchor Device	Fall protection to BS EN 795 Class A1, A2, A3, A4, A5, A6 + A7 & C with load managed to meet maximum tested load. Industrial Roped Access to BS 8610: 2017	800mm	250 x 250	200 x 200 @ 20mm dia	Horizontal concrete slab	25 kN	M12

All of our products are manufactured in accordance with BS EN ISO 3834-2:2005 and BS EN 1090-1:2009+A1:2011 and carry the CE Marking.

For general enquiries and the price of this product, please call us on 0114 285 2203

Designed and Manufactured in accordance with
BS EN ISO 3834-2:2005 and BS EN 1090-1:2009
+ A:2011 & 2:2008 and are CE Marked.

SATRA Tested SPC0294154 Issue 2 in accordance
with EN 795:2012 and CEN/TS 16415:2013 for up
to 2 users and BS 8610:2017 Types A1-7.

Contact Us

Phone - 0114 285 2203
Email - info@safetyfabrications.co.uk

16-17 Nutwood Trading Estate,
Limestone Cottage Lane,
Sheffield, S6 1NJ

ASCENT™

