



Aluminium Bi-fold and Sliding Door Systems

aluk.co.uk

Experts in Aluminium

ALUK[®]



Contents

5 By Experts

6 Why Choose Aluminium?

8 A System for Every Application

10 Tested, Tried and Trusted

13 Door Systems

14 Infinium Sliding

16 Luminia SC156 Lift & Slide

18 Optio BSC94 Lift & Slide

20 Optio BSC94 In-Line Sliding

22 Luminia F82 Bi-Fold

24 Optio BSF70 Bi-Fold

26 Hardware



AT ALUK WE BELIEVE
COLLABORATION IS KING.
IT'S WHY WE'RE PROUD OF
THE PARTNERSHIPS WE'VE
BUILT WITH FABRICATORS,
INSTALLERS AND
ARCHITECTS THROUGHOUT
THE UK AND BEYOND

By experts, for experts

It's fair to say we live and breathe aluminium at AluK. From its melting point of 660.32°C to its remarkable low density and vital role in the aerospace industry, there's little we don't know about atomic number 13. More importantly, we're experts at using this versatile metal to create high-performing and sustainable door systems that surpass the needs of fabricators and installers across the UK.

From the production line to our design and sales offices, every member of the AluK team is a leader in their field. It's this collective expertise alongside our traditional family values that have enabled us to design, engineer and manufacture industry-leading façade systems for over 25 years.

Boasting slimmer sightlines and greater feature options, all our products are manufactured to the highest UK standards. So whether commercial or residential, modern or traditional, you can be confident our experts will ensure every AluK product delivers peerless performance and signature style.

Russell
Russell Yates
AluK Managing Director

Why choose AluK aluminium systems?

For over 25 years, we've been at the forefront of aluminium door design.

But why aluminium?

It's lightweight, strong and almost 100% recyclable.

It doesn't warp or rust and is near maintenance-free.

Plus it's exceptionally versatile and easy to install.

And that's really just for starters.

Design

Without compromising on strength, our aluminium door systems are designed to offer your customers the narrowest of sightlines, allowing bigger glazing and providing greater light into their homes.

Our integrated systems are designed for maximising profiles and parts, as well as to ensure fast fabrication and a wide range of installation options.

Colour

Access a large spectrum of contemporary and classic colour choices and finishes.

We also offer a range of standard single and dual colour products from stock with our Colour+ offer.

For full Colour+ details email info@aluk.co.uk

Security

We understand the importance of security to your customers. That's why all our door systems are independently tested to ensure they not only meet current security regulations for new builds, but that they're inherently burglar resistant too.

Most of our systems are also certified by PAS 24, Secured By Design and Q-marked accredited.

Thermal efficiency

Our door systems offer award-winning U-value performance for both double and triple glazing.

In fact, we were the first company to ever gain an A-rated aluminium double glazed system in the market.

Performance

Each system includes water and acoustic barriers, and utilises the latest manufacturing technologies and techniques to provide long-term peace of mind.

They also have integrated drainage paths that allow water to pass through the system.

This, combined with the high quality air seals and barriers, ensures they can tackle the everchanging British climate with ease.

Energy Ratings (WERs)

Our aluminium door systems are rated for their energy efficiency using the familiar A-G scale. This means homeowners and architects can instantly see which doors to choose.

WERs also affect fabricators, because in order to supply WER

products a fabricator must join an official and recognised scheme.

This is to ensure that manufacturers can prove they have audited processes in place and that the ratings displayed are accurate. As you'd expect, we have our own group scheme at AluK.

This provides members fast-track access to all our WER data, saving them valuable time and effort.

For a more detailed look at the ratings, download our **WER guide** at aluk.co.uk

Service excellence

Expert service is key at AluK, so our trained architectural technicians and engineers are always on-hand to offer guidance and support from design through to installation.

We also have highly experienced Project Consultants able to help with design, system selection, construction details and project specifications for your specific sector.

AluK Academy

Training is another key service we provide. From CPDs and toolbox talks to hands-on guidance at our Academy Centre, we provide a wide range of training options to all our customers.

To find out more simply email training.uk@aluk.com

An AluK system for every application

If there's one thing homeowners, architects, installers and fabricators all have in common, it's their desire for choice. That's why we've created our wide range of aluminium façade systems to meet the needs of different application, performance and aesthetic demands.

To make life easy for homeowners, we've created three product ranges based on their individual requirements:

- ▶ For those looking for the thinnest sightlines and finest finish, there's our premium Infinium sliding door.
- ▶ If outstanding quality and stand-out at a competitive price is desired, the Luminia range is the obvious choice.
- ▶ For stylish design and everyday practicality, opt for the Optio range of door systems.

From a fabricator and installer perspective, we offer systems that cover everything from new builds, replacements and large-scale refurbishment projects.

Whatever choice you make, you can be confident that our systems offer the superior performance and quality of aluminium through and through.



New builds



Residential replacement

Tested, tried and trusted

From trusted favourites to the latest innovations, our comprehensive range of aluminium door systems has been designed and developed with fabricators, installers and homeowners in mind at every stage.

Furthermore, every system delivers the aesthetic appeal and exceptional build quality demanded by the industry.

It also goes without saying they've all been tested and certified to the latest standards and accreditations.

These include PAS 24, BS4873, Secured By Design and Qualicoat for starters. Not to mention ISO 9001. They also hold Q-Mark

Certifications for enhanced security doors. Should we go on?

Whichever system you choose, we'll work closely with you to ensure you have all the information you require for successful fabrication and installation.

All the latest structural, thermal and wind calculations are available, as is a comprehensive suite of CAD, NBS Specifications performance and environmental data.

ALWAYS UP TO THE TEST





AluK door systems

Engineered to integrate seamlessly with our window system range, our aluminium door systems remain our most popular products and provide unrivalled safety, security and installation simplicity.

Each door system has its own distinct look and feel, offering varying levels of performance, profile depth and glazing area.

However, while our designs may differ you'll find our materials and manufacturing processes are as reliable as ever - you have our guarantee. A 10-year one, in fact.

In addition to meeting the needs of every application type, our doors also support the current industry trend for refurbishment over replacement.

This allows fabricators and installers to provide the additional light and space their customers want, in the most befitting way possible.



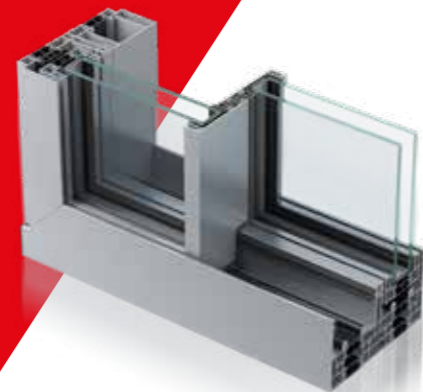
INFINIUM Sliding Door

Infinium brings together indoor and outdoor living spaces in exquisite harmony.

Free-flowing spaces are created thanks to stunningly slim sightlines that bathe every surface with natural light. Uninterrupted panoramic landscapes provide complete escapism, without the need for escape.

Also, seamlessly integrated floor-to-ceiling glazing reflects the clarity of thought behind every inspired design decision.

Visit infinium.aluk.com for more information and to request a brochure.



DESIGN FEATURES

- › Sliding door
- › Fully concealed outer frame
- › 21mm central interlock
- › One or more opening panels with large width dimensions up to 3000mm, and height dimensions up to 3500mm
- › Holds up to 400kg panel weight

OPTIONS

- › Available in double or triple track
- › Glazing options of 38mm–52mm
- › Floating corner post option for larger opening space
- › Available in single colour polyester powder coating, textured and anodised finishes
- › Available in a range of configurations
- › Double or triple glazing solutions available on the same outer frame
- › Manual or concealed motorised opening options

SPECIFICATIONS

Performance & accreditations

Uw-Value (Double Glazing)	1.3 W/m²K
Uw-Value (Triple Glazing)	< 1.0 W/m²K
Air Permeability	Class 4 (600 Pa)
Water Tightness	Class 8A (450 Pa)
Wind Resistance	Class C3 (1200 Pa up to 160 km/h)
Cycle Testing	25,000

System

Depth	Concealed
-------	-----------

Configurations

Opening	Inline Sliding
Dual Rail	✓
Tri Rail	✓

Size and weight limits

Max Sash Height	3500mm
Max Sash Width	3000mm
Max Sash Weight	400kg

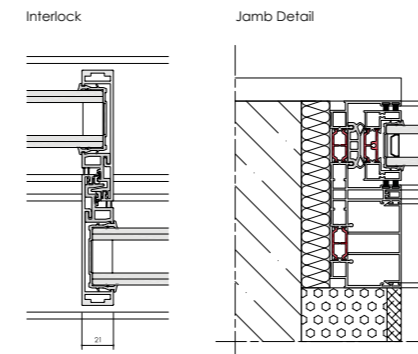
System features

Single Colour	✓
Textured Finish	✓
Anodised Finish	✓
Multi-Point Locking	✓
Sightlines - Interlock	21mm

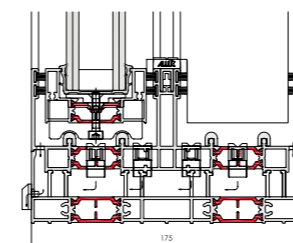
INFINIUM CONFIGURATIONS



CAD CROSS SECTIONS



Sill Detail



Luminia

SC156 Lift & Slide Door

A premium sliding door system with slim sightlines available in a variety of sliding configurations, using single and double track systems.

The Luminia SC156 offers high levels of performance, from thermal U-values of 1.0W/m²K (triple glazed), to the most superior water tightness on the market (1500 Pa) and panel weights of up to 400Kg.

Smooth operation is guaranteed through the use of the highest quality fittings.



DESIGN FEATURES

- ▶ Lift and Slide for smooth operation
- ▶ PAS 24 Accredited
- ▶ Exceptional AWW ratings
- ▶ Low threshold of 23mm
- ▶ Max 400kg panel weight

OPTIONS

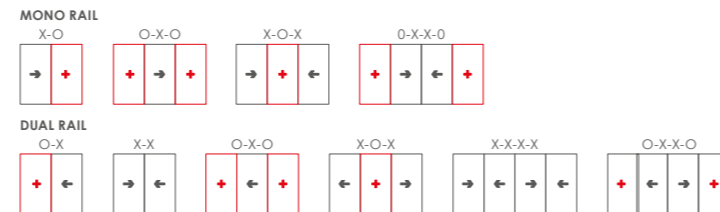
- ▶ Slimmer sightline of 50mm interlock
- ▶ Accepts 24mm – 50mm double or triple glazing
- ▶ Multiple sliding configurations
- ▶ Mono or Dual rail options
- ▶ Range of hardware and security features
- ▶ Available in a range of single and dual colours, textured and anodised finishes

SPECIFICATIONS

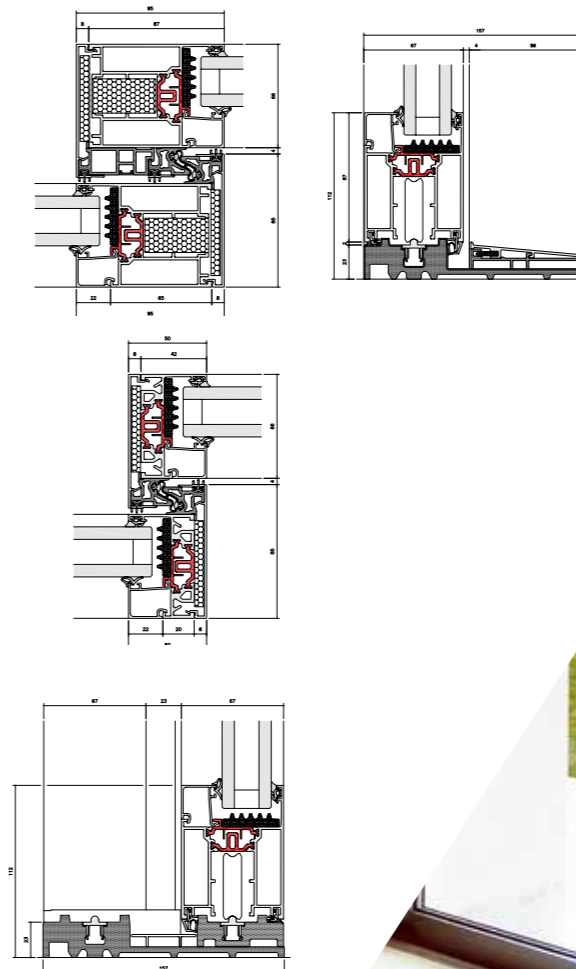
	SC156	SC156 SLIM
Performance and accreditation		
U-value (Double Glazing) (Ug = 1.0 W/m ² K) (Mono Rail)	1.4 W/m ² K	1.4 W/m ² K
U-value (Triple Glazing) (Ug = 0.6 W/m ² K) (Mono Rail)	1.0 W/m ² K	1.0 W/m ² K
U-value (Double Glazing) (Ug = 1.0 W/m ² K) (Dual Rail)	1.5 W/m ² K	1.6 W/m ² K
U-value (Triple Glazing) (Ug = 0.6 W/m ² K) (Dual Rail)	1.2 W/m ² K	1.3 W/m ² K
Air Permeability	Class 4 (600 Pa)	Class 4 (600 Pa)
Water Tightness	Class E1500 (1500Pa)	Class E1500 (1500Pa)
Wind Resistance	C4 (1600 Pa)	C4 (1600 Pa)
Acoustic Performance	Rw(Ct;Ctr) = 44 (-2;-6) dB	Rw(Ct;Ctr) = 44 (-2;-6) dB
Security	PAS 24 & SBD	PAS 24 & SBD
System		
Depth	156mm	156mm
Configuration & frame		
Opening	Lift & Slide	Lift & Slide
Mono Rail	✓	✓
Dual Rail	✓	✓
Size and weight limits		
Max Frame Height	3100mm	3100mm
Max Vent Height	2900mm	2900mm*
Max Vent Width	2825mm	2825mm
Max Vent Weight	400kg	400kg*
Glazing		
Glazing Options	Internal	Internal
Glazing Thickness	24mm-50mm	24mm-50mm
System features		
Single Colour	✓	✓
Dual Colour	✓	✓
Textured Finish	✓	✓
Anodised Finish	✓	✓
Multi-Point Locking	✓	✓
Threshold	23mm	23mm
Sightlines	95mm	50mm

*Depending on design wind load and hardware

SC156 (LIFT & SLIDE) CONFIGURATIONS



CAD CROSS SECTIONS



Optio

BSC94 Lift & Slide Door

For those looking for effortless operation, look no further than our premium lift and slide door. Its vital statistics are impossible to ignore.

Thermal U-Values of 1.5W/m2K (triple glazed). Panel weights of up to 400kg. Sightlines as little as 45mm.

The list goes on. As do the benefits, including multiple configurations and a wide choice of colour finishes.



DESIGN FEATURES

- › Accepts 20mm–31mm double glazing
- › Max 400kg panel weight

OPTIONS

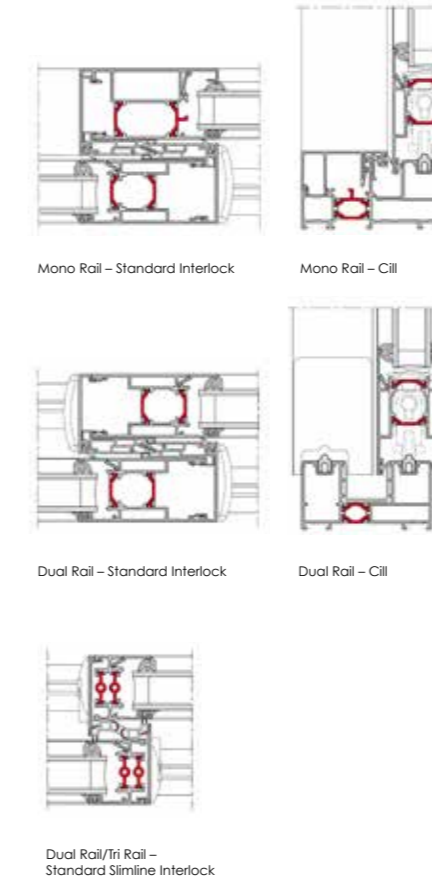
- › Slimmer sightline of 45mm available
- › Multiple sliding configurations
- › Mono, dual or triple rail options
- › Range of hardware and security features
- › Available in single or dual colour polyester powder coating, texture and anodised finishes

SPECIFICATIONS

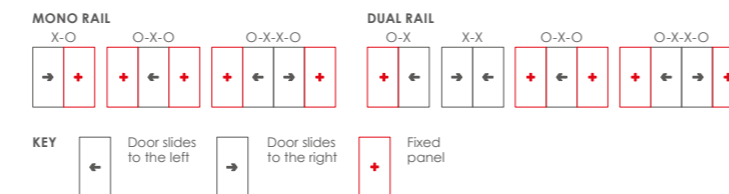
Performance and accreditation	BSC94
U-Value (Double Glazing) (Ug = 1.0 W/m²K) (Mono Rail)	1.7 W/m²K
U-Value (Triple Glazing) (Ug = 0.7 W/m²K) (Mono Rail)	1.5 W/m²K
U-Value (Double Glazing) (Ug = 1.0 W/m²K) (Dual Rail)	1.9 W/m²K
U-Value (Triple Glazing) (Ug = 0.7 W/m²K) (Dual Rail)	1.7 W/m²K
BRE Green Guide Rating	C Rated
Air Permeability	Class 4 (600 Pa)
Water Tightness	Class 7a (300 Pa)
Wind Resistance	C3 (1200 Pa)
Acoustic Performance	npd
System	
Depth	94mm-155mm
Configurations	
Opening	Lift & Slide
Mono Rail	✓
Dual Rail	✓
Tri Rail	✓
Size and weight limits	
Max Frame Height	3000mm
Max Vent Width	2000mm
Max Vent Weight	400kg
Glazing	
Glazing Options	Internal
Glazing Thickness	20mm-31mm
System features	
Single Colour	✓
Dual Colour	✓
Textured Finish	✓
Anodised Finish	✓
Multi-Point Locking	✓
Sightlines (Interlock)	100mm
Sightlines (Cill)	130.5mm
Sightlines (Head)	130.5mm
Sightlines (Jamb)	130.5mm

Performance and accreditation	BSC94 SLIM
U-Value (Double Glazing) (Ug = 1.0 W/m²K) (Mono Rail)	x
U-Value (Triple Glazing) (Ug = 0.7 W/m²K) (Mono Rail)	x
U-Value (Double Glazing) (Ug = 1.0 W/m²K) (Dual Rail)	1.9 W/m²K
U-Value (Triple Glazing) (Ug = 0.7 W/m²K) (Dual Rail)	1.6 W/m²K
BRE Green Guide Rating	C Rated
Air Permeability	Class 4 (600 Pa)
Water Tightness	Class 7a (300 Pa)
Wind Resistance	C3 (1200 Pa)
Acoustic Performance	npd
System	
Depth	94mm-155mm
Configurations	
Opening	Lift & Slide
Mono Rail	x
Dual Rail	✓
Tri Rail	x
Size and weight limits	
Max Frame Height	3000mm
Max Vent Width	2000mm
Max Vent Weight	400kg
Glazing	
Glazing Options	Internal
Glazing Thickness	20mm-31mm
System features	
Single Colour	✓
Dual Colour	✓
Textured Finish	✓
Anodised Finish	✓
Multi-Point Locking	✓
Sightlines (Interlock)	45mm
Sightlines (Cill)	130.5mm
Sightlines (Head)	130.5mm
Sightlines (Jamb)	130.5mm

CAD CROSS SECTIONS



BSC94 (LIFT & SLIDE) CONFIGURATIONS



Optio

BSC94 In-line Sliding Door

Combining high performance with stunning design, our sliding aluminium door systems provide a versatile solution for any architectural project.

Manufactured to the highest UK standards, this multi-configuration inline system offers outstanding thermal performance and a wide range of customisable options.



DESIGN FEATURES

- Accepts 20mm–31mm double glazing
- Max 400kg panel weight
- Anti bi-metal strip
- Certified to PAS 24 and SBD

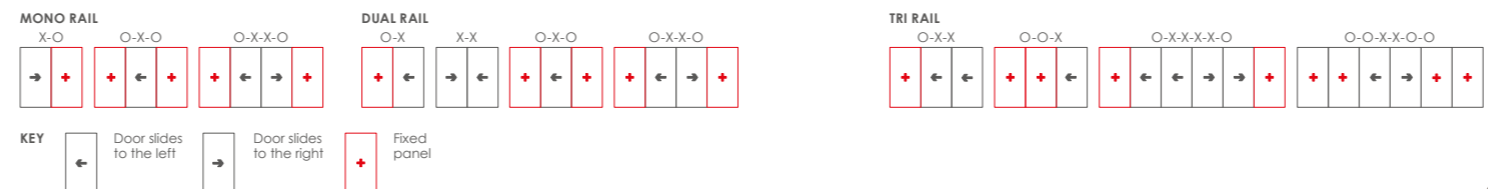
OPTIONS

- Slimmer sightline of 45mm available
- Multiple sliding configurations
- Mono, dual or triple rail options
- Available in single or dual colour polyester powder coating, texture and anodised finishes
- Range of hardware and security features

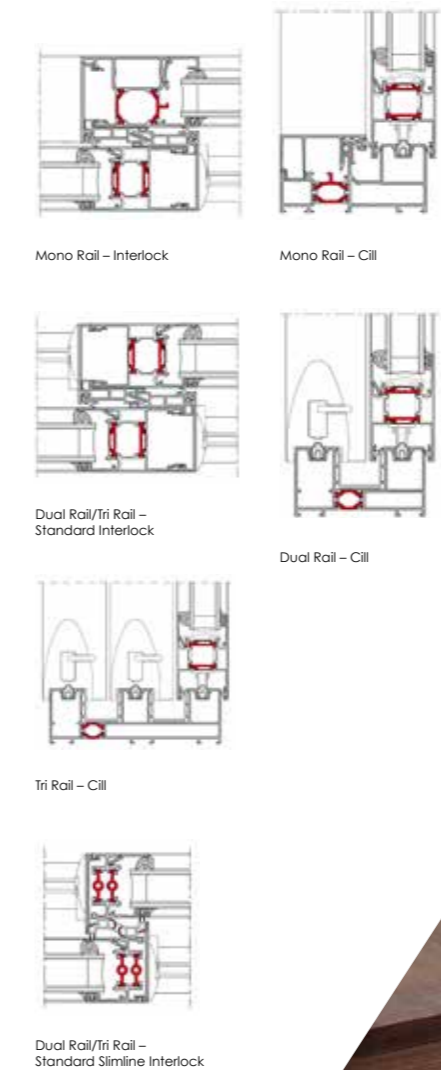
SPECIFICATIONS

	BSC94	BSC94 SLIM
Performance and accreditation		
U-Value (Double Glazing) (Ug = 1.0 W/m²K) (Mono Rail)	1.6 W/m²K	x
U-Value (Triple Glazing) (Ug = 0.7 W/m²K) Mono Rail)	1.4 W/m²K	x
U-Value (Double Glazing) (Ug = 1.0 W/m²K) (Dual Rail)	1.7 W/m²K	1.7 W/m²K
U-Value (Triple Glazing) (Ug = 0.7 W/m²K) (Dual Rail)	1.5 W/m²K	1.5 W/m²K
BRE Green Guide Rating	C Rated	C Rated
Air Permeability	Class 4 (600 Pa)	Class 4 (600 Pa)
Water Tightness	Class 7a (300 Pa)	Class 7a (300 Pa)
Wind Resistance	C3 (1200 Pa)	C3 (1200 Pa)
Acoustic Performance	Rw (C;Ctr) 36 (-1;-3) dB**	npd
Security	PAS 24 & SBD	x
System		
Depth	94mm-155mm	94mm-155mm
Configurations		
Opening	Inline Sliding	Inline Sliding
Mono Rail	✓	x
Dual Rail	✓	✓
Tri Rail	✓	✓
Size and weight limits		
Max Frame Height	3000mm	3000mm
Max Vent Width	2000mm	2000mm
Max Frame Height With Security Features	2600mm	x
Max Vent Weight	400kg	400kg
Glazing		
Glazing Options	Internal	Internal
Glazing Thickness	20mm-31mm	20mm-31mm
System features		
Single Colour	✓	✓
Dual Colour	✓	✓
Textured Finish	✓	✓
Anodised Finish	✓	✓
Multi-Point Locking	✓	✓
Sightlines (Interlock)	85mm	45mm
Sightlines (Cill)	115.5mm	115.5mm
Sightlines (Head)	115.5mm	115.5mm
Sightlines (Jamb)	115.5mm	115.5mm

BSC94 (INLINE) CONFIGURATIONS



CAD CROSS SECTIONS



Luminia

F82 Bi-fold Door

A contemporary, stylish bi-folding door, with thinner sightlines and an interlock of 122mm that provide larger glazing panels without compromising on performance.

It also offers HD compact slim stainless steel rollers as standard allowing for a smoother movement when opening and closing. And with the re-design of the flush pop-out handle, form and function work in perfect harmony.

Visit f82.aluk.com for more information and to request a brochure.



DESIGN FEATURES

- Unique flush pop-out handle for ease of operation, removing the need for additional unsightly handles
- Unique traffic door handle
- Heavy-duty stainless steel compact rollers as standard
- Full symmetrical frame sightline of 97mm
- 122mm slimline interlock
- Low threshold
- Larger glazing area

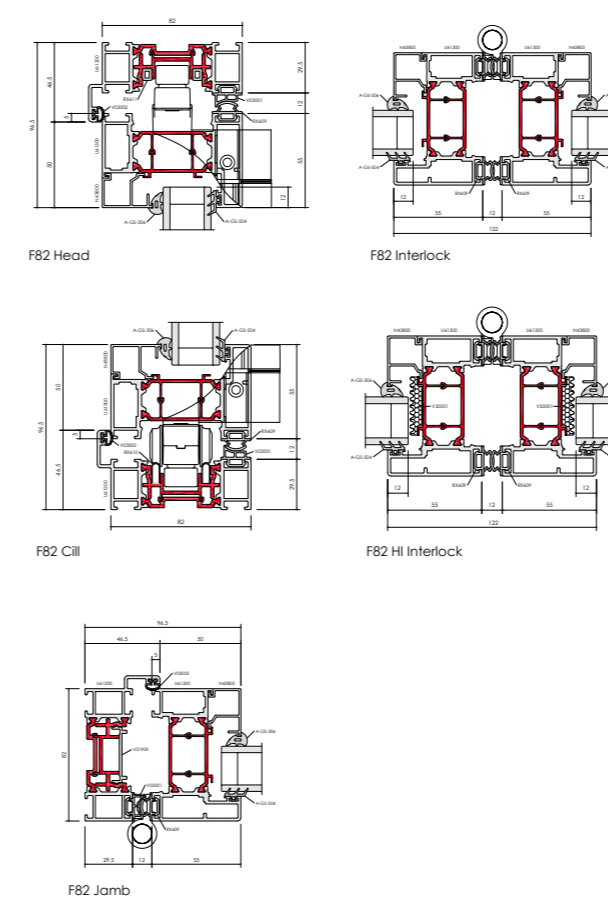
OPTIONS

- Square bead
- Glazing sizing range of 28mm-44mm
- Available in a range of opening configurations
- Available in single or dual colour polyester powder coating, texture and anodised finishes
- All configurations available open-in and open-out

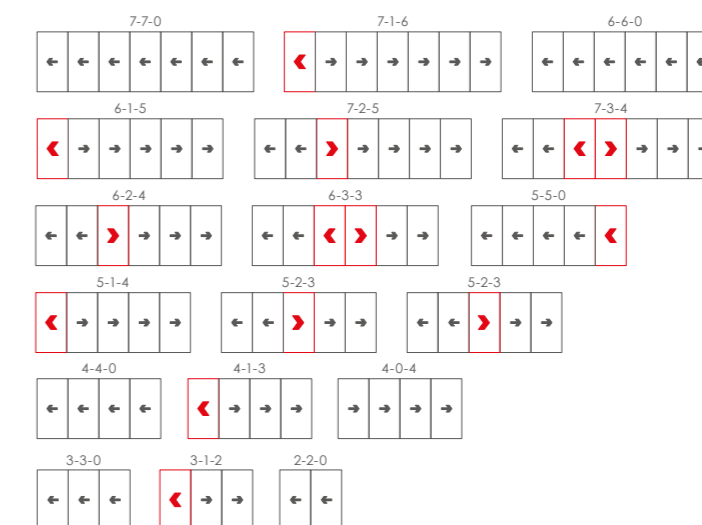
SPECIFICATIONS

Performance and accreditation	F82
U-Value (Double Glazing) (Ug: 1.0 W/m²K)	1.3 W/m²K
U-Value (Triple Glazing) (Ug: 0.7 W/m²K)	1.0 W/m²K
Air Permeability (Standard Threshold)	Class 3 (600 Pa)
Water Tightness (Standard Threshold)	Class 5a (200 Pa)
Wind Resistance	Class 4A (1600 Pa)
Security	PAS 24 & SBD
System	
Depth	82mm
Configurations	
Opening	Open-In & Open-Out
Size and weight limits	
Max Leaf Height	2600mm
Max Leaf Width	1200mm
Max Vent Weight	150kg
Glazing	
Glazing Options	Internal Bead
Glazing Thickness	28mm - 44mm
System Features	
Single Colour	✓
Dual Colour	✓
Textured Finish	✓
Anodised Finish	✓
Multi-Point Locking	✓
Sightline (Head)	97mm
Sightline (Cill)	97mm
Sightline (Jamb)	97mm
Sightline (Meeting Stile)	122mm

CAD CROSS SECTIONS



F82 CONFIGURATIONS



KEY



OTHER OPTIONS AVAILABLE



Optio

BSF70 Bi-fold Door

An intelligent combination of form and function, our highly versatile and market-leading bi-fold sliding door system gives you maximum control over the style and operation of the doors.

Multiple panels can be added to accommodate the design specifications of your building, with the option to open in or out as required.

The system also boasts a unique flush line pop-out handle that allows for square flush stacking panels when doors are fully open.



DESIGN FEATURES

- Internally beaded with a softline or square detail to all external doors and panels
- Four stainless steel wheels ensures smooth and consistent operation
- Unique, flush line pop-out handle that allows maximum door opening and square stacking of panels
- Tested to PAS 24 and certified under the Secured By Design scheme

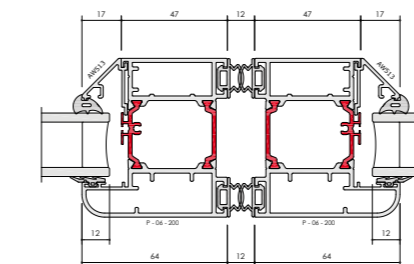
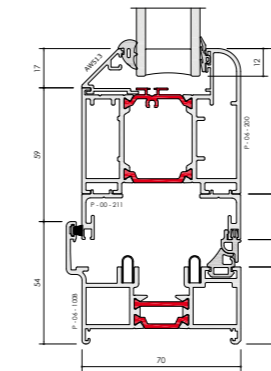
OPTIONS

- Heavy-duty roller options
- Chamfered and square bead options
- Low threshold option that can be configured to achieve DDA and Part M compliance
- Doors and panels can be used in a variety of configurations, style and design
- All configurations are available in both open-in and open-out options
- Full range of bespoke hardware available
- Glazing sizing range of 24mm-40mm
- Available in single or dual colour polyester powder coating, texture and anodised finishes

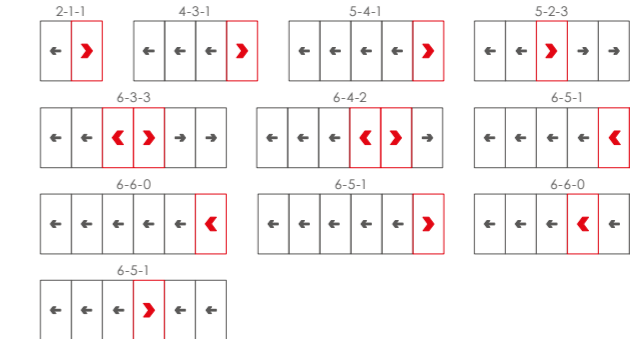
SPECIFICATIONS

	BSF70	BSF70 HD
Performance and accreditations		
U-Value (Double Glazing) (Ug: 1.0 W/m²K)	1.6 W/m²K	1.6 W/m²K
U-Value (Triple Glazing) (Ug: 0.7 W/m²K)	1.4 W/m²K	1.4 W/m²K
Air Permeability (Standard Threshold)	Class 4 (600 Pa)	Class 4 (600 Pa)
Water Tightness (Standard Threshold)	Class 9a (600 Pa)	Class 9a (600 Pa)
Wind Resistance	Class AE2400 (2400 Pa)	Class AE2400 (2400 Pa)
Security	PAS 24 & SBD	PAS 24 & SBD
Cycle Testing	50,000	50,000
3rd Party Certification Q-Mark	✓	✓
System		
Depth	70mm	70mm
Configurations		
Opening	Open-In & Open-Out	Open-In & Open-Out
Size and weight limits		
Max Leaf Height	2400mm	2400mm
Max Leaf Width	1200mm	1200mm
Max Vent Weight	100kg	130kg
Glazing		
Glazing Options	Internal Bead	Internal Bead
Glazing Thickness	24mm-40mm	24mm-40mm
System Features		
Single Colour	✓	✓
Dual Colour	✓	✓
Textured Finish	✓	✓
Anodised Finish	✓	✓
Multi-Point Locking	✓	✓
Sightline (Head)	110mm	110mm
Sightline (Cill)	130mm	130mm
Sightline (Jamb)	110mm	110mm
Sightline (Meeting Stile)	140mm	140mm

CAD CROSS SECTIONS



BSF70 CONFIGURATIONS



KEY



OTHER OPTIONS AVAILABLE



Finish in style

When it comes to designing aluminium façade systems, we go to great lengths to ensure every part plays its part to perfection. No shortcuts are taken, no corners cut.

We take the exact same approach when it comes to developing hardware. Every product is designed to not only complement our systems, but strikingly enhance them too.

Our tested, tried and trusted hardware range includes suited handles, locks, hinges, rollers, bogeys, seals and brushes. Each and every product has to pass our famously stringent tests, with most subjected to 50,000 operational cycles to emulate a lifetime of trouble-free operation. Then the real testing begins.

Our quality assurance team surveys every nut, every screw, every surface to ensure it's both scratch-free and up to scratch.

We also believe security should be a standard, not an aspiration. It's why almost every aluminium door system featuring our hardware is certified by the Secured by Design scheme.

Of course, added strength and security should never compromise style. And certainly never function. It's why our hardware products not only improve ease of operation for years to come, but deliver a timeless look and finish.



T: 01291 639 739
E: info.uk@aluk.com

Registered Office:
AluK (GB) Ltd
Newhouse Farm Ind Est
Chepstow
NP16 6UD

Registered Number:
02881320

aluk.co.uk

Experts in Aluminium

ALUK[®]