

GRP Lean To GRP Tiled

Fixing

- The Door Canopy must be installed by a qualified fitter under the supervision of a person responsible for technical matters on site.
- The RecPlast Gallows brackets are fixed to the wall in two places using StormFix 120 fixings.
- The canopy is placed on the brackets and the rear fixing/flashing flange is fixed to the external wall with StormFix 80 fixings at maximum 450mm centres, or other suitable alternative, as directed by a suitably qualified person.
- The gallows brackets are fixed to the canopy soffit in two places on each bracket. The gallows brackets are NOT to be used as the main structural support for the canopy.



For Canopies up to a maximum 750mm projection.

- These instructions do not absolve the installer of the responsibility to check the chosen fixings are compatible with the wall construction. All fixings are to be installed in strict accordance with the manufacturer's instructions.
- The upstand must be over flashed in lead or mastic sealed.

Handling

- Mouldings can usually be carried manually.
- If mechanical handling equipment is used, always use suitable battens or bearers to protect the product.
- Remove the protective packaging only when fixing is imminent.
- Care should be taken not to damage the surface of the GRP.

Storage

- Always store the roof on its back i.e. with the fixing flange face downwards, covered and dry.
- If stored externally, do not expose to direct sunlight whilst inside the packaging.

Maintenance

- GRP is low maintenance and will not require regular painting or decorating.
- To maintain its finish we advise cleaning periodically using an ammonia free detergent solution. Abrasive cleaners, wire wool or scourers should not be used as they may scratch the finished surface.
- Small areas of accidental site damage can be easily repaired, kits are available from Stormking for a small charge.

Technical helpline:

01827 311100

www.stormking.co.uk

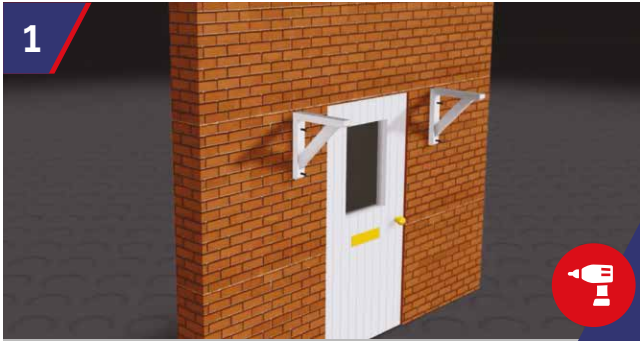


GRP Lean To GRP Tiled

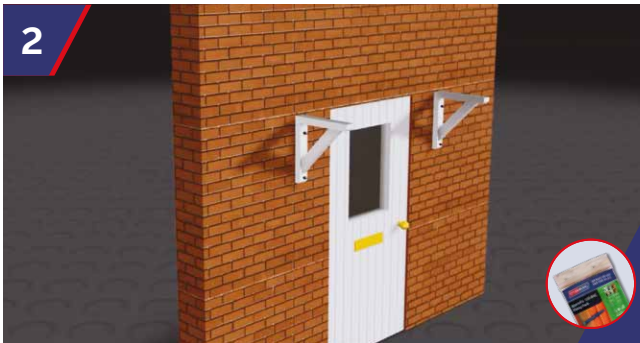
Installation Instructions



GRP Lean To GRP Tiled



The Gallow's Brackets are fixed into the wall in two places ensuring the gallow's are level. Using a 10mm drill bit, drill into wall structure, to suit the StormFix 120 Fixing. Insert StormFix Blue Frame Fixing Sleeve 120 into the drilled holes.



Once the StormFix Blue Frame Fixing Sleeves have been inserted into the holes, fully screw the StormFix 120 fixings into the sleeves. Conceal fixings using the bolt caps to cover the screws and plugs.



The canopy is placed on the brackets. Using a 10mm drill bit, drill through the GRP Upstand into wall structure at a maximum of 450mm centres, to suit the StormFix 80 Fixing.



Insert StormFix Blue Frame Fixing sleeve 80 into the drilled holes.



Once the StormFix Blue Fixing Sleeves have been inserted into the holes, fully screw the StormFix 80 fixings into the sleeves.



The Gallow's Brackets are fixed to the canopy soffit in two places on each bracket. The Gallow's Brackets are NOT to be used as the main structural support for the canopy. The upstand must be over flashed in lead or mastic sealed.

Technical helpline:

01827 311100

www.stormking.co.uk