

GRP Apex Trussed

Fixing

- The Door Canopy must be installed by a qualified fitter under the supervision of a person responsible for technical matters on site.
- The RecPlast Gallows brackets are fixed to the wall in two places using StormFix 120 fixings and screw fixed to the canopy soffit in two places – The gallows brackets are NOT to be used as the main structural support for the canopy.
- The rear structural timber truss is fixed to the external wall with StormFix 120 fixings, or other suitable alternative, as directed by suitably qualified person at Maximum 450mm centres.
- All tiling battens should be secured to all support trusses including the back truss against the structure.
- The roofs can be traditionally tiled to manufacturers recommendations



For Canopies up to a maximum 750mm projection.

- These instructions do not absolve the installer of the responsibility to check the chosen fixings are compatible with the wall construction. All fixings are to be installed in strict accordance with the manufacturer's instructions.
- The roofs can be traditionally tiled to manufacturer's recommendations.

Handling

- Mouldings can usually be carried manually.
- If mechanical handling equipment is used, always use suitable battens or bearers to protect the product.
- Remove the protective packaging only when fixing is imminent.
- Care should be taken not to damage the surface of the GRP.

Storage

- Always store the roof on its back i.e. with the fixing flange face downwards, covered and dry.
- **If stored externally, do not expose to direct sunlight whilst inside the packaging.**

Maintenance

- GRP is low maintenance and will not require regular painting or decorating.
- To maintain its finish we advise cleaning periodically using an ammonia free detergent solution. Abrasive cleaners, wire wool or scourers should not be used as they may scratch the finished surface.
- Small areas of accidental site damage can be easily repaired, kits are available from Stormking for a small charge.

Technical helpline:

01827 311100

www.stormking.co.uk



STORMKING®

GRP BUILT OFF-SITE.
SAVE TIME ON-SITE.

ENTRANCE CANOPIES

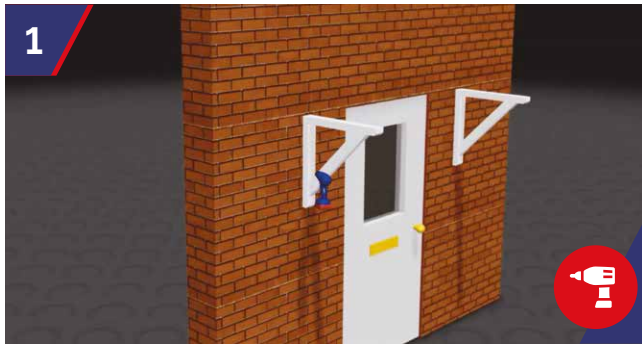
GRP Apex Trussed

Ready to Tile

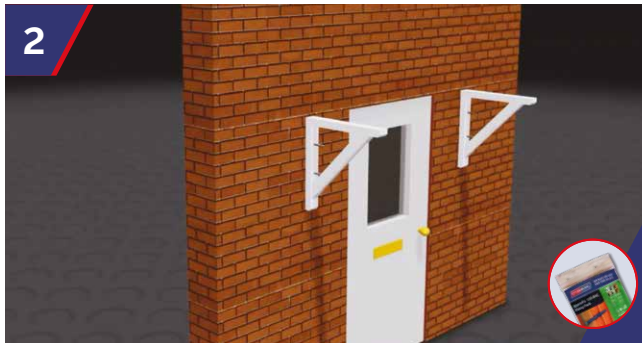
Installation Instructions



GRP Apex Trussed



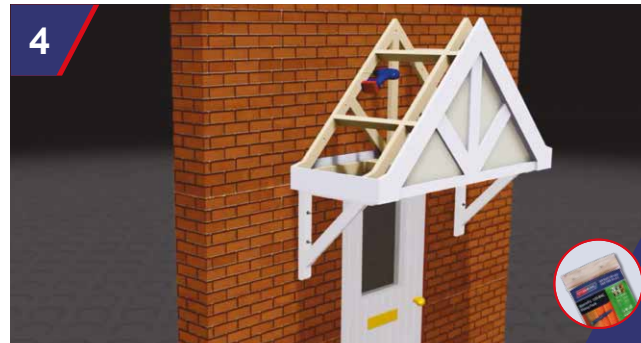
The Gallows Brackets are fixed into the wall in two places ensuring the gallows are level. Using a 10mm drill bit, drill into wall structure, to suit the StormFix 120 Fixing. Insert StormFixBlue Frame Fixing Sleeve 120 into the drilled holes.



Once the StormFix Blue Frame Fixing Sleeves have been inserted into the holes, fully screw the StormFix 120 fixings into the sleeves. Conceal fixings using the bolt caps to cover the screws and plugs.



The canopy is placed on the brackets. Using a 10mm drill bit, drill through the rear structural timber truss into wall structure at a maximum of 450mm centres, to suit the StormFix 120 Fixing.



Insert StormFix Blue Frame Fixing sleeve 120 into the drilled holes.



Once the StormFix Blue Fixing Sleeves have been inserted into the holes, fully screw the StormFix 120 fixings into the sleeves.



The Gallows Brackets are fixed to the canopy soffit in two places on each bracket. The Gallows Brackets are NOT to be used as the main structural support for the canopy. All tiling battens should be secured to all support trusses including the back truss against the structure. The roofs can be traditionally tiled to manufacturer's recommendations.

Technical helpline:

01827 311100

www.stormking.co.uk